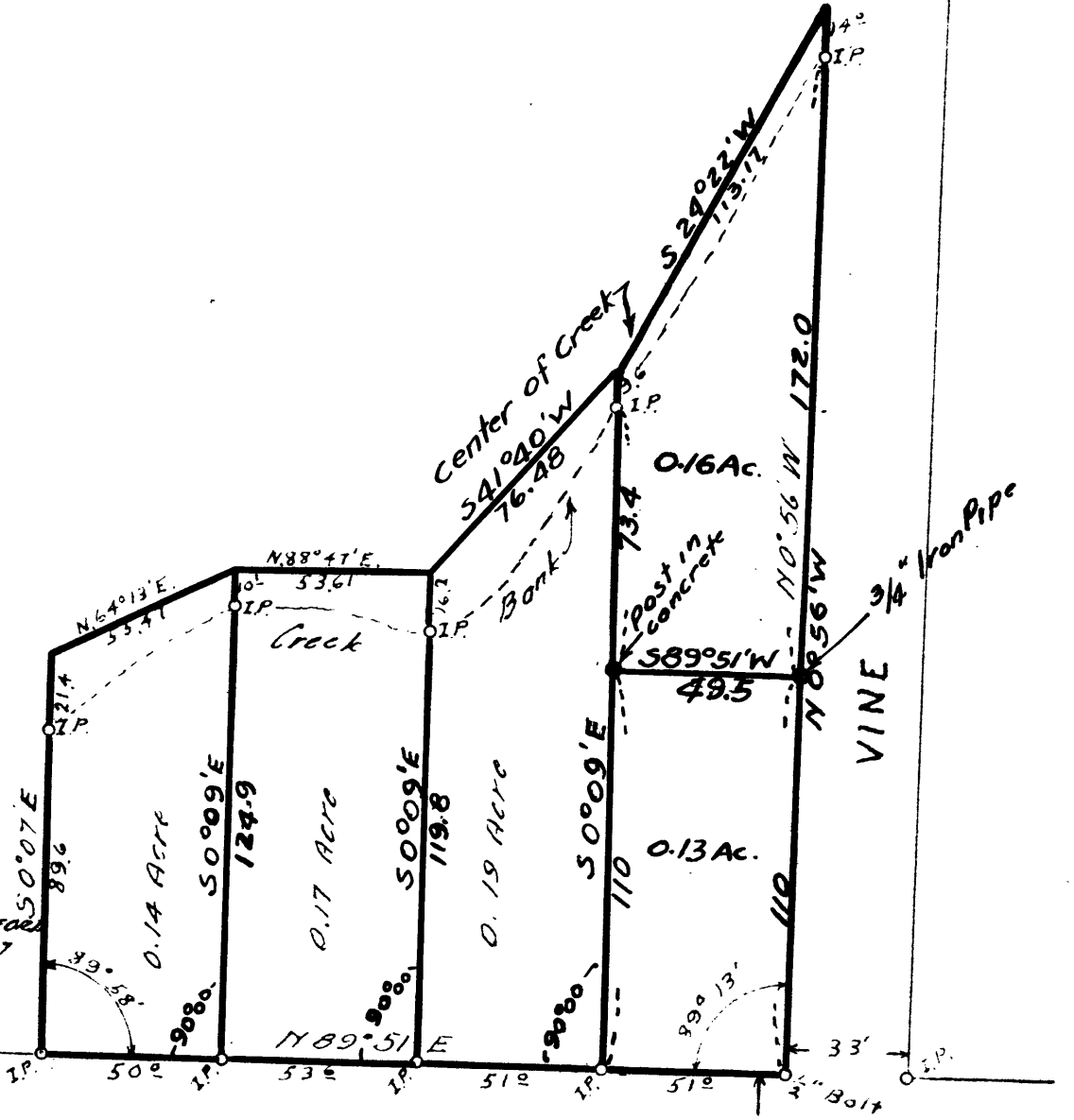


COUNTY SURVEYOR'S OFFICE  
DOUGLAS COUNTY OREGON  
DEED DESCRIPTIONS LOT 14  
FRUITVALE

BEH. B. IRVING COUNTY SURVEYOR  
N.E. RICHARDSON Deputy County Surveyor

SCALE 1" = 50'

EDWIN S. WOODRICK  
VOL. 110 PAGE 637  
DEED RECORDS



BRADON ST.



*N.E. Richardson*

COUNTY SURVEYORS FILE DATA  
DO NOT REMOVE FROM OFFICE