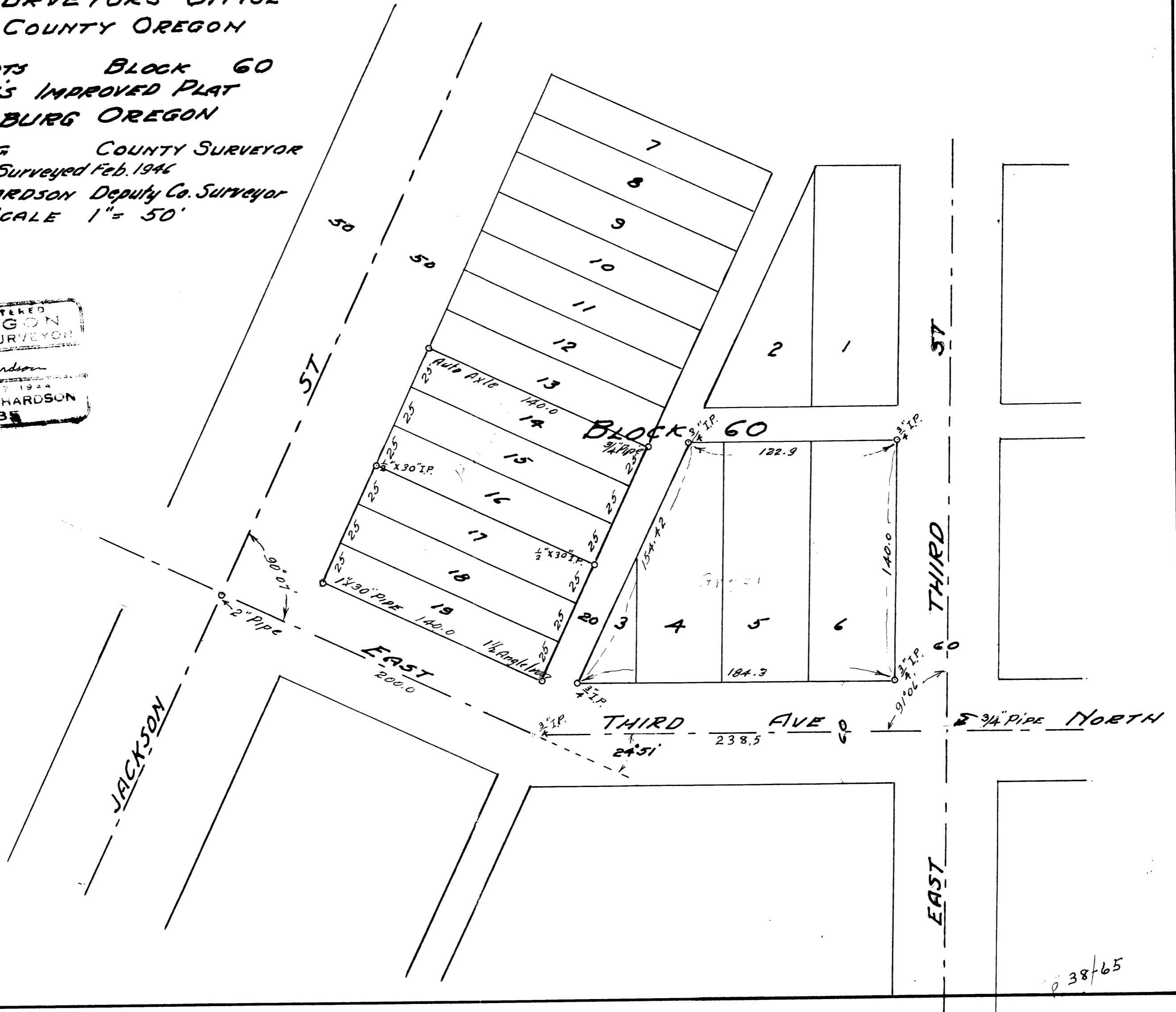
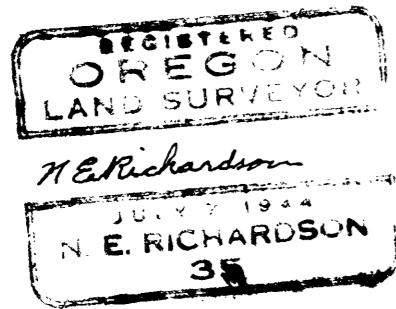


COUNTY SURVEYORS FILE DATA
DO NOT REMOVE FROM OFFICE

COUNTY SURVEYOR'S OFFICE
DOUGLAS COUNTY OREGON

CERTAIN LOTS BLOCK 60
KINNEY'S IMPROVED PLAT
ROSEBURG OREGON

BEN. B. IRVING COUNTY SURVEYOR
Surveyed Feb. 1946
H. E. RICHARDSON Deputy Co. Surveyor
SCALE 1" = 50'



38/65