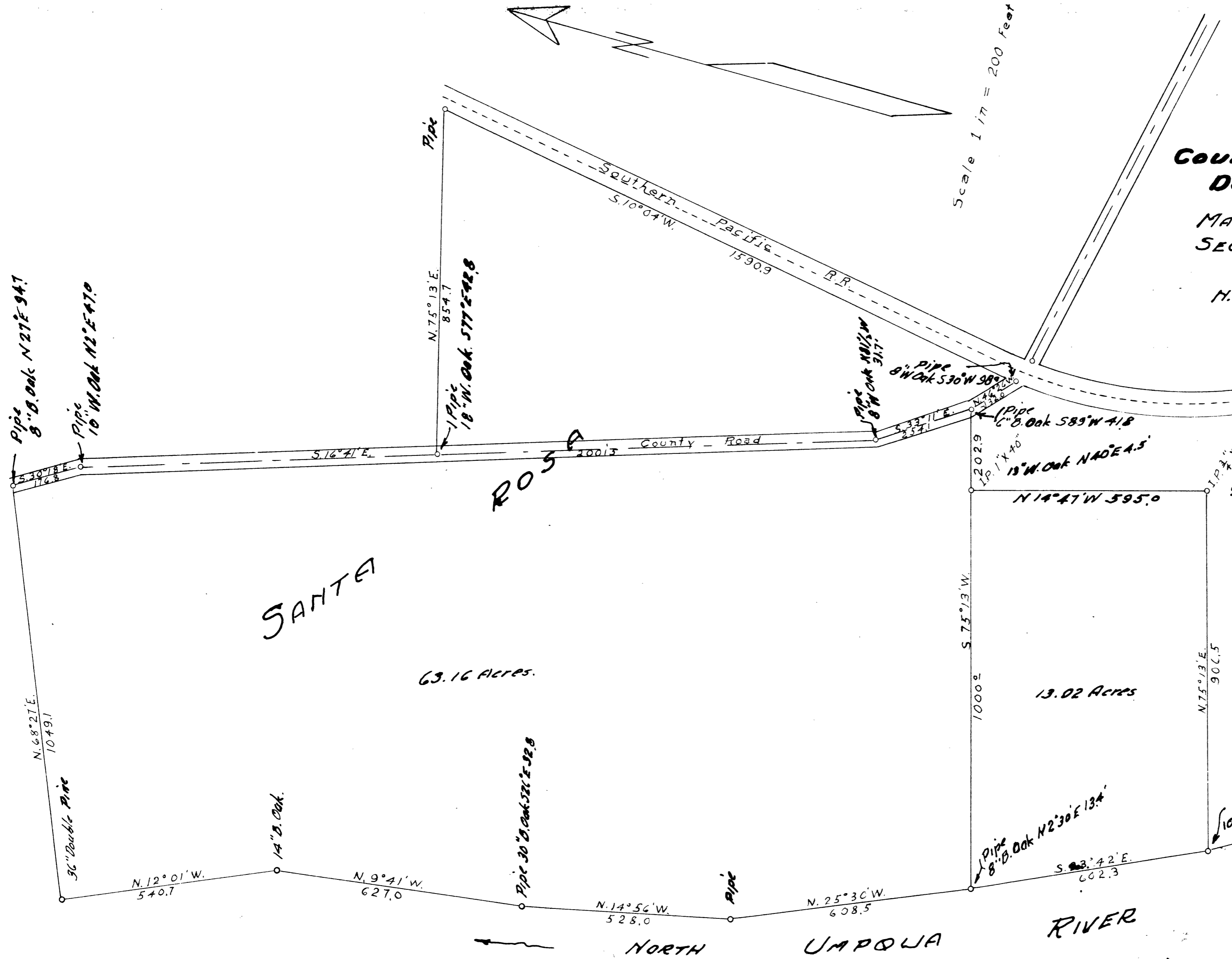


**COUNTY SURVEYOR'S OFFICE
DOUGLAS COUNTY OREGON**

MAP OF TRACT OF LAND SITUATE IN
SECTIONS 23-24-25-26 T26S R6W W.M.

M. E. RICHARDSON DEPUTY COUNTY SURVEYOR
Surveyed Nov. 1945

Scale 1 in = 200 Feet



NOTE:-
13.02 Acre Tract surveyed this survey.
Balance of information obtained from
notes taken during prior survey and
filed this office.

M. E. Richardson