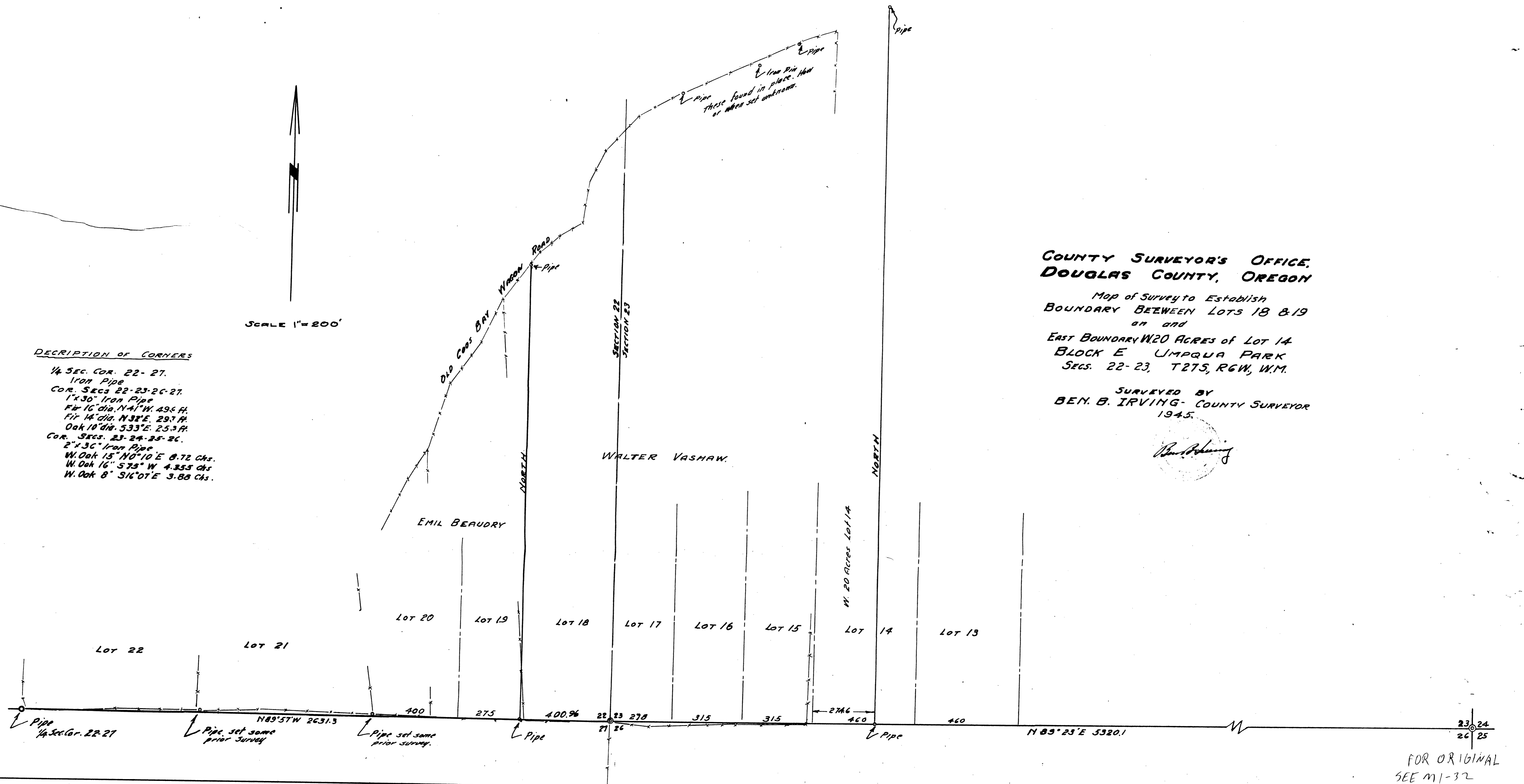


SCALE 1"=200'

DESCRIPTION OF CORNERS

1/4 SEC. COR. 22-27.
 Iron Pipe
 COR. SECS 22-23-26-27.
 1"x30" Iron Pipe
 Fir 16" dia. N41°W. 49.6 ft.
 Fir 14" dia. N38°E. 29.7 ft.
 Oak 10" dia. S33°E. 25.3 ft.
 COR. SECS. 23-24-25-26.
 2"x36" Iron Pipe
 W. Oak 15" N0°10' E 8.72 chs.
 W. Oak 16" S75° W 4.355 chs.
 W. Oak 8" S16°07' E 3.88 chs.



COUNTY SURVEYOR'S OFFICE,
 DOUGLAS COUNTY, OREGON

Map of Survey to Establish
 BOUNDARY BETWEEN LOTS 18 & 19
 on and
 EAST BOUNDARY W20 ACRES of LOT 14
 BLOCK E UMPQUA PARK
 SECS. 22-23, T27S, R6W, W.M.

SURVEYED BY
 BEN. B. IRVING - COUNTY SURVEYOR
 1945.

Ben. B. Irving

FOR ORIGINAL
 SEE M1-32
 C. S. File No. 3847