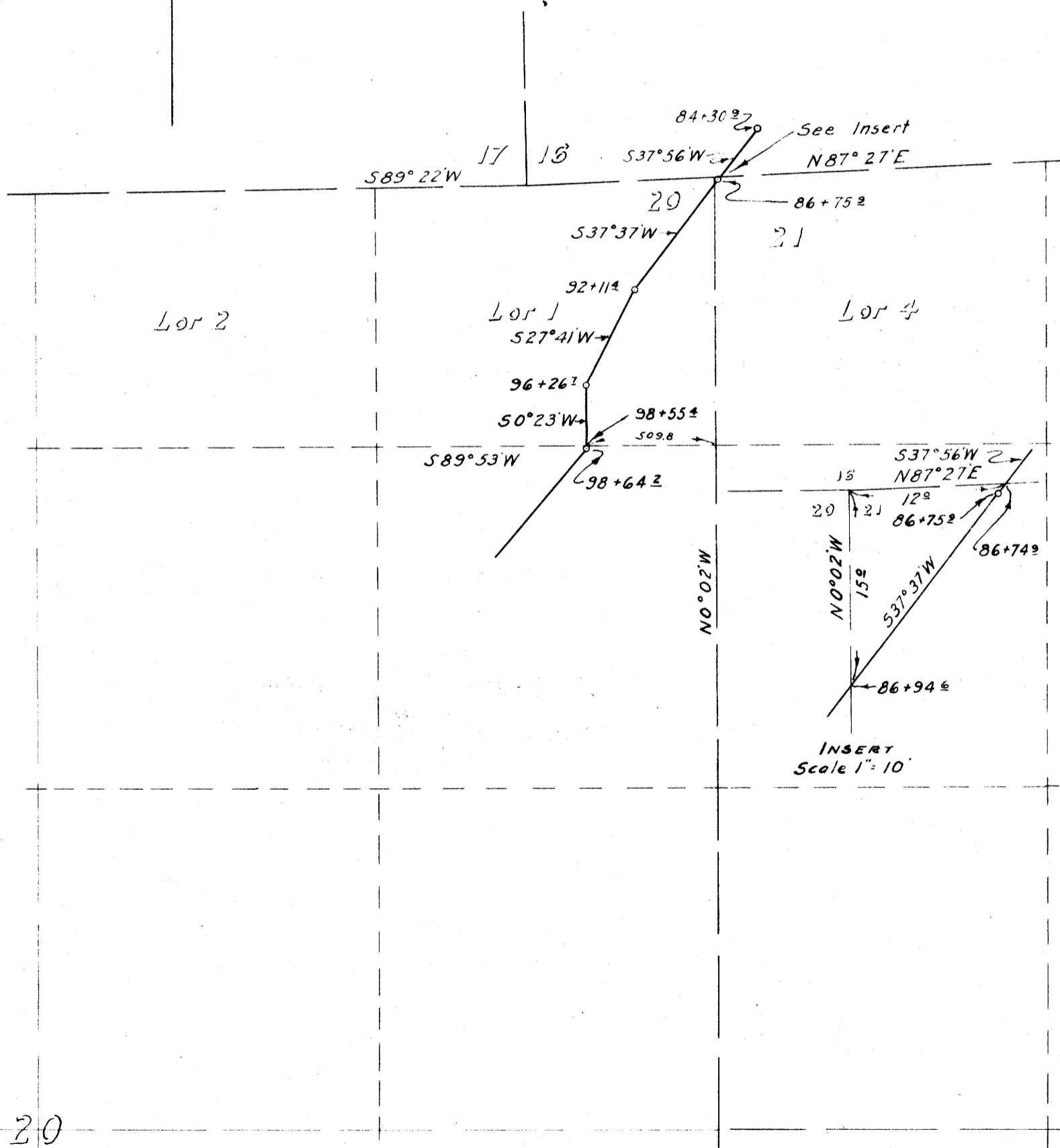


**RIGHT OF WAY  
OF  
TRUCK LOGGING ROAD  
FOR  
H. B. DOLLAR  
SECTIONS 20, 21, T32S, R3W, W.M.  
WIDTH OF RIGHT OF WAY - 50 FT.  
SCALE 1" = 500'**



AFFIDAVIT OF ENGINEER

Ben B. Irving, being duly sworn, says, that he is the person employed by H. B. Dollar to make the survey represented on the accompanying map, that the survey of said parties truck-logging road, described as follows:-

Beginning at a point on the North line of Section 21, T32S, R3W, W.M., which point is N 87° 27' E 12.0 ft. distant from the Northwest corner of said Section 21, running thence along the route represented on said map S 37° 56' W 1.0 ft.; Thence S 37° 37' W 18.7 ft. to the intersection of the West line of said Section, Thence continuing S 37° 37' W 516.8 ft. to a point; Thence S 27° 41' W 415.3 ft. to a point; Thence S 0° 23' W 228.7 ft. to the South line of Lot 1, Sec. 20, said Township and Range:-

was made, by him, as the engineer employed by said party and under his authority, commencing Jan. 29, 1945 and ending Feb. 10, 1945, and that such survey is accurately represented on this map.

*Ben B. Irving*  
Ben B. Irving  
Registered Civil Engineer.

*Ben B. Irving*

Suscribed and sworn to before me this 5<sup>th</sup> day of August 1946.

*Key R. Lee*  
County Clerk.

By

Deputy.

CS FILE FOLDER

CONTAINS

MORE

INFORMATION