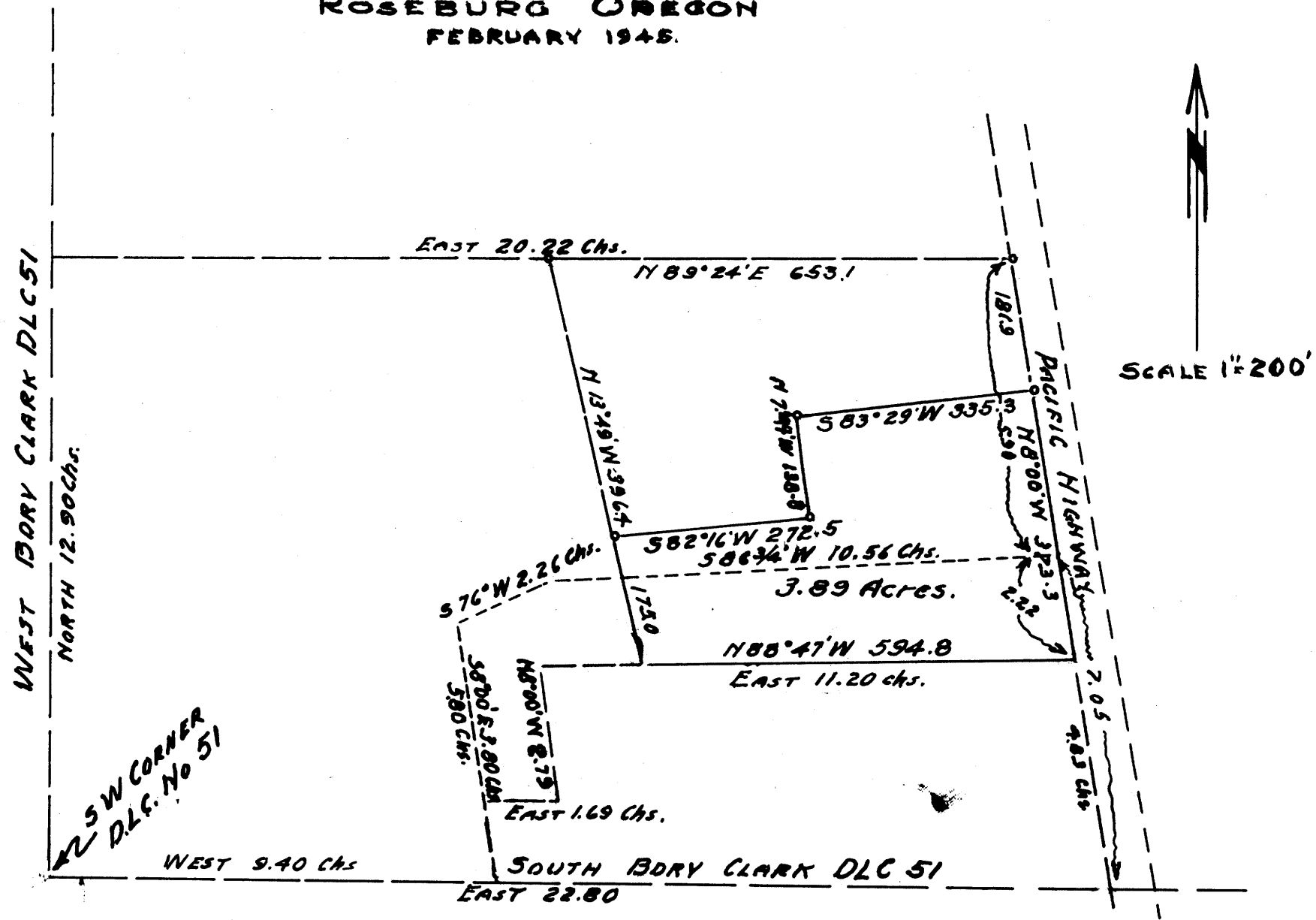


COUNTY SURVEYORS FILE DATA
DO NOT REMOVE FROM OFFICE

PROPERTY RETAINED BY
JOHN P. CLIFTON
DLC 51 SEC. 27 T. 30 S., R. 5 W., W. M.
COUNTY SURVEYOR'S OFFICE
ROSEBURG OREGON
FEBRUARY 1945.



CS 38/34
FILE 3-DRAWER 38 551.

CS FILE FOLDER

CONTAINS

MORE

INFORMATION