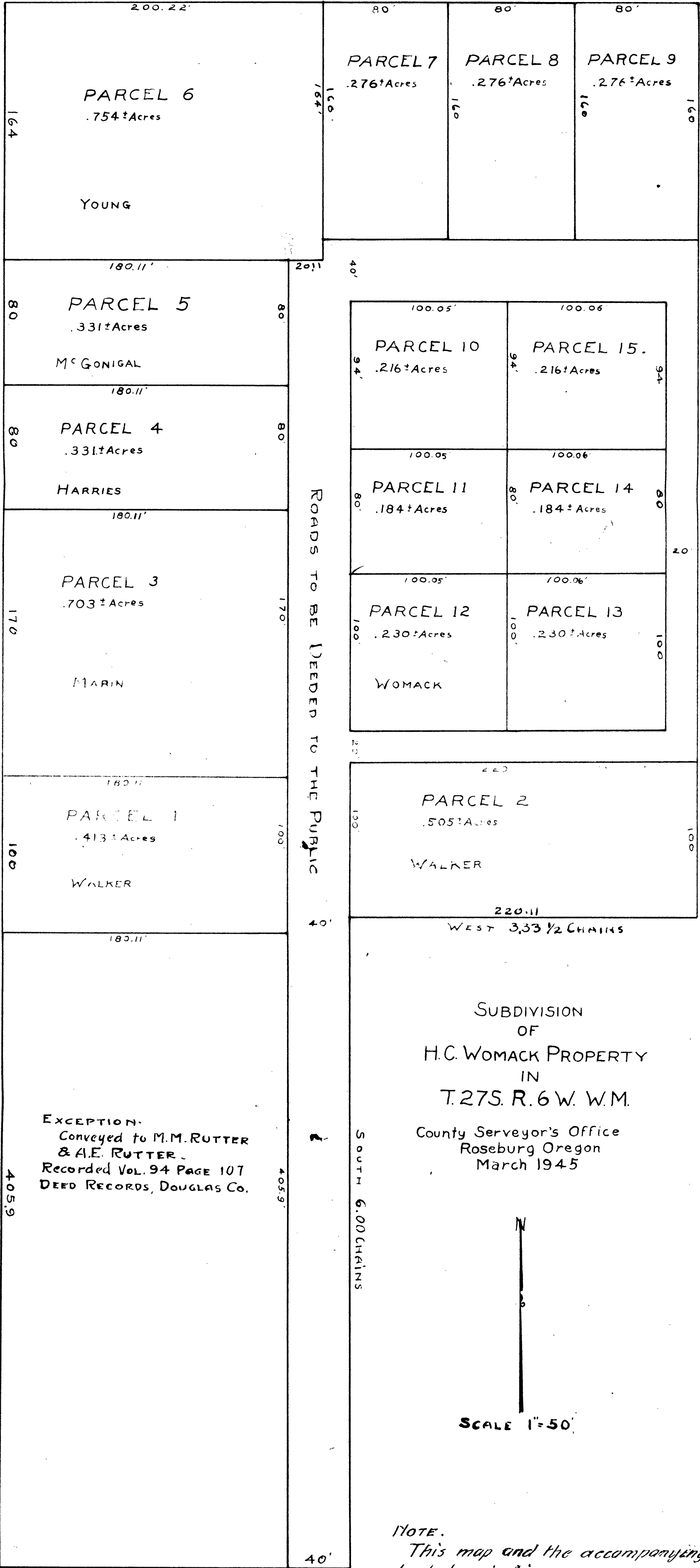


EAST 6.67 CHAINS

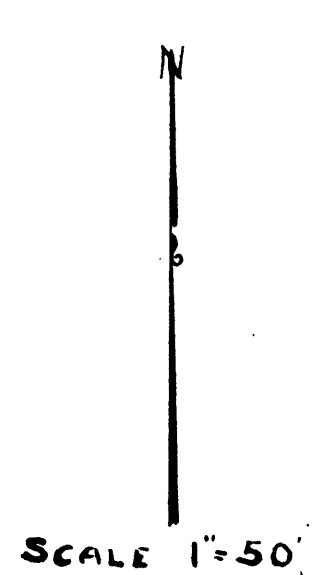


5.23 CHAINS  
 3451.18 Ft. W to SE  
 Interior Angle Corner of  
 The Isaac Jones D.L.C.

EXCEPTION-  
 Conveyed to M.M. RUTTER  
 & A.E. RUTTER  
 Recorded Vol. 94 Page 107  
 DEED RECORDS, DOUGLAS Co.

SUBDIVISION  
 OF  
 H.C. WOMACK PROPERTY  
 IN  
 T.27S. R.6 W. W.M.

County Surveyor's Office  
 Roseburg Oregon  
 March 1945



NOTE.  
 This map and the accompanying  
 deed descriptions were prepared  
 from the original deed description  
 and not from a field survey.

FOR ORIGINAL SEE M18-58