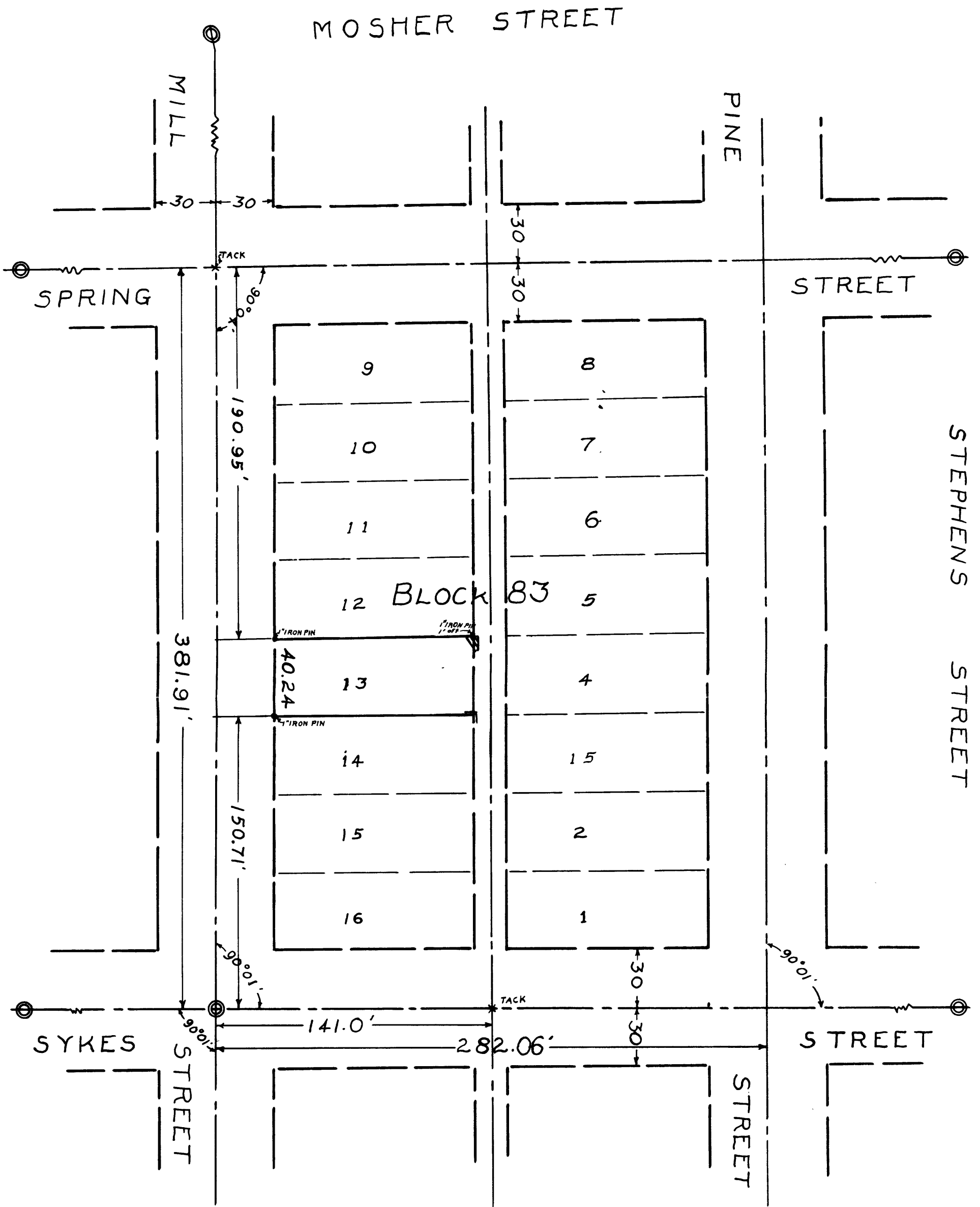


LEGEND

- Property Lines
- ⊙ City Street Monuments



SURVEY OF LOT 13 - BLOCK 83
 ROSE THIRD SOUTHERN ADDITION TO ROSEBURG

SURVEYED JAN. 11, 1945 by:
 BEN B. IRYING
 COUNTY SURVEYOR

**COUNTY SURVEYORS FILE DATA
 DO NOT REMOVE FROM OFFICE**