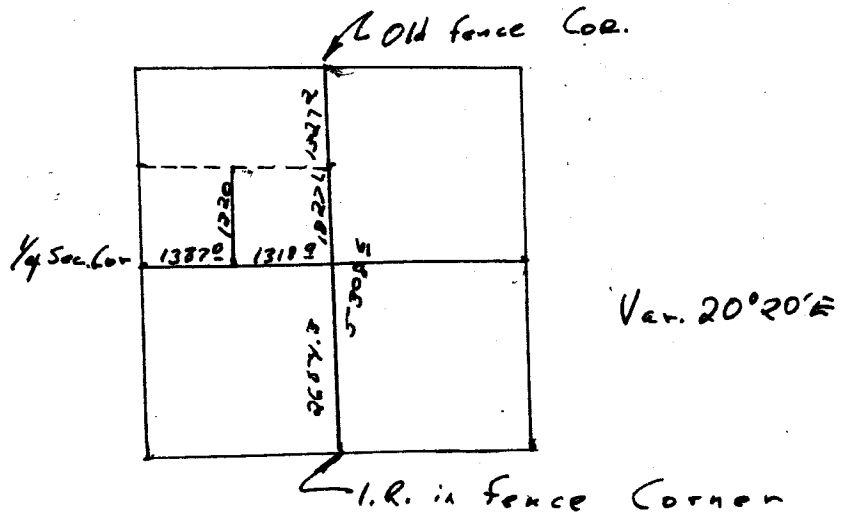


37  
203

37  
203 T28S128W Wm Sec. 31 Harrison & Wakefield  
Camas Valley Oreg.



Note:- Unable to identify 1/4 cor. on N. bdry. Section. Fence corner fits good for line notes on topography.

1/4 cor. on So. bdry has been used for many years by persons occupying adjoining lands.

This as close as necessary by Harrison + Wakefield are purchasing timber and only wanted sufficient information to determine ownership along W. line S.E. & N.W. for purposes of Payment only

Ben Boring.  
1-26-39

g

HARRISON & WAKEFIELD  
CAMAS VALLEY ORE

Sec. 31 T28SR8W.

W Ben D Irving  
Dep Co Surv.

Ch. N E Richardson

Jan 24-25-1939

C. S. File No. 37/203

Hub.	Ft.	L	CC	M/C	Stops
8 26 8 42	389'	2 53 1 26 R	✓ N 0° 26' W	N 0° 35' W	
29 5 17	362 9	2 25 1 13 R	N 1° 52' W	N 1 3/4 W	
6 13 2 12	187 2		✓ N 3° 05' W	N 3 1/4 W	
5		7 04 3 35 L			
	404 5		✓ N 0° 30' E	N 1 1/2 E	
13 4 0 5 ↓		0 27 0 14 R	N 0° 16' E	N 1/4 W	
	380 2	9 04 4 32 L			
3	342 9	<del>2 21 R</del>	N 4 1/4 E	N	
2		2 21 R			
	604 6		N 2° 27' E	N 1 1/2 W	
1		23 06 L	<del>23 06 L</del>		
	10 8		N 25° 33' E		
1 Pin				1/2 1/4 E	

2/10/39

T Irving  
H. Richardson  
Harrison

1 1/2  
1 3  
1 1/4

17' back H/W to Boyer's Post

C. S. File No. 37/203

Hub TT	FY	L	CC	MC	Slope.
16 276°	229 <sup>4</sup>	26 6°13' L	N0°04'E	N0°10'W	
15	140 <sup>1</sup>	1041 250' L	N0°17'E	N1°3/4'W	
14	152 <sup>8</sup>	5 40 2°50' R	N1°37'E	N3/4'E +10°40' 157 <sup>5</sup>	
13	148 <sup>2</sup>	2 35 1°17' L	N1°43'W	N1°3/4'W +6°01' 169°	
12	83 <sup>6</sup>	1°26 0°43' L	N0°26'W	N1/2'W +18°48' 88 <sup>3</sup>	
11 346.39	326°	1°52 1°26. R	N0°17'E		30° -10°05' 300°
10 363.79	84 <sup>9</sup>	1 08 0°37' L	N1°09'W	N1°4'W +5°57' 85 <sup>4</sup>	
9	869.8 <sup>4</sup>		N0°35'W	N1°W	+5°58' 273 <sup>9</sup> +6°4' 300° +4°32' 300°
8 264.41		0°09' L	N0°26'W		

98272

~~992682~~ 99449  
~~149~~  
~~895338~~  
~~397928~~  
~~99482~~ 2918  
~~148~~  
~~94665~~

95255      506  
           295365  
           3260

~~9955~~ - 99461

99458 272415  
 99440 298320  
 99687 299041  
 869796

99455  
~~85~~  
~~397820~~  
~~497275~~  
~~7956~~  
~~84930570~~

98272  
~~1575~~  
~~491360~~  
~~687904~~  
~~491360~~  
~~98272~~ 460  
~~154975~~

94665  
 883  
 283995  
 75732  
 75732  
 83589195

99458  
~~239~~  
~~895122~~  
~~298374~~  
~~696206~~  
~~195916~~  
 272415.468

Old Fence  
Cor

19

61.8 ✓

22°07' R

N26°01'E N25<sup>0</sup>/<sub>4</sub> +1330' 63<sup>6</sup>

18

5035.9

225<sup>2</sup>

0<sup>49</sup>/<sub>24</sub>' R

N3°54'E N3<sup>3</sup>/<sub>4</sub>E

17

207.5

7<sup>22</sup>/<sub>3</sub> 41' R

N3°30'E N3<sup>1</sup>/<sub>4</sub>E

16

4726

1024 ✓

0<sup>30</sup>/<sub>15</sub>' L

N0°11'W N<sup>3</sup>/<sub>4</sub>W +875' 1035

N0°04'E

97237

98965  
- 7430  
194825  
296895  
48965  
102528775

C. S. File No. 37/203

1446	F7	L	CC	MC	Slope
20515 I	263 <sup>5</sup>	8°38' 4 19 L	N86°46'E	N87°05'E	
H					
	202 <sup>1</sup>	3 30 1°45' R	S89°01'E	S89° E	202 <sup>9</sup>
G					
	189 <sup>2</sup>	4 33 2°17' R	N89°14'E	N89°10'45°40'	190 <sup>1</sup>
F					
1349 <sup>0</sup>	172 <sup>8</sup>		N86°57'E	N85°10'E - 5°40'	173 <sup>7</sup>
E		4 00 2°00' L			
126 <sup>2</sup>	87 <sup>6</sup>		N88°57'E	N89°20'E	
D		2 30 1°15' L			
1138 <sup>6</sup>	254 <sup>0</sup>		S89°48'E	S89°40'E - 4°00'	254 <sup>6</sup>
C		17 0°08' R			
582 <sup>6</sup>					
	392 <sup>6</sup>		S89°56'E	N89°30'E - 10°45'	979 300 <sup>0</sup>
B		0°06' R			
	170 <sup>0</sup>				
			N89°58'E	N89°20'E	172° - 8°40'
A		0°06' 0°03' R			
	322 <sup>0</sup>		N89°55'E	N89°50'E	
					4°03' 22 <sup>8</sup> 300 <sup>0</sup>
44531/36					
					2020 E

#-25-38

cloudy

140  
2000  
50

99511

99511

99511

99511

1904  
99511  
843594 5  
99511

1737  
696577  
298533  
696577  
99511  
172850607  
99756  
2546

4115  
6  
24690  
2769  
271590  
2642  
+759  
1120

99756

189174 411

98536  
399024  
498780

98245

294735  
977  
5926  
199512  
253978  
976

98858

98858

172  
197716  
692006  
98558  
17003576

29825  
228  
5620

99750

New BT 24" Cedar. 545° E 68 kts  
O BT 40" Fr 1 - N 20° W 18 kts

Remark ad

C. S. File No. 37/203

Hub.

F4

L

20

ML

Slope

1

51°16'E

8

18°33'L

16.4

517°17'W

IT

109°40'R

L

76.7

-3°45'

300-

N87°37'E

N68°E

-3°25'

300-

I  
2054.5

IT  
0°57'R

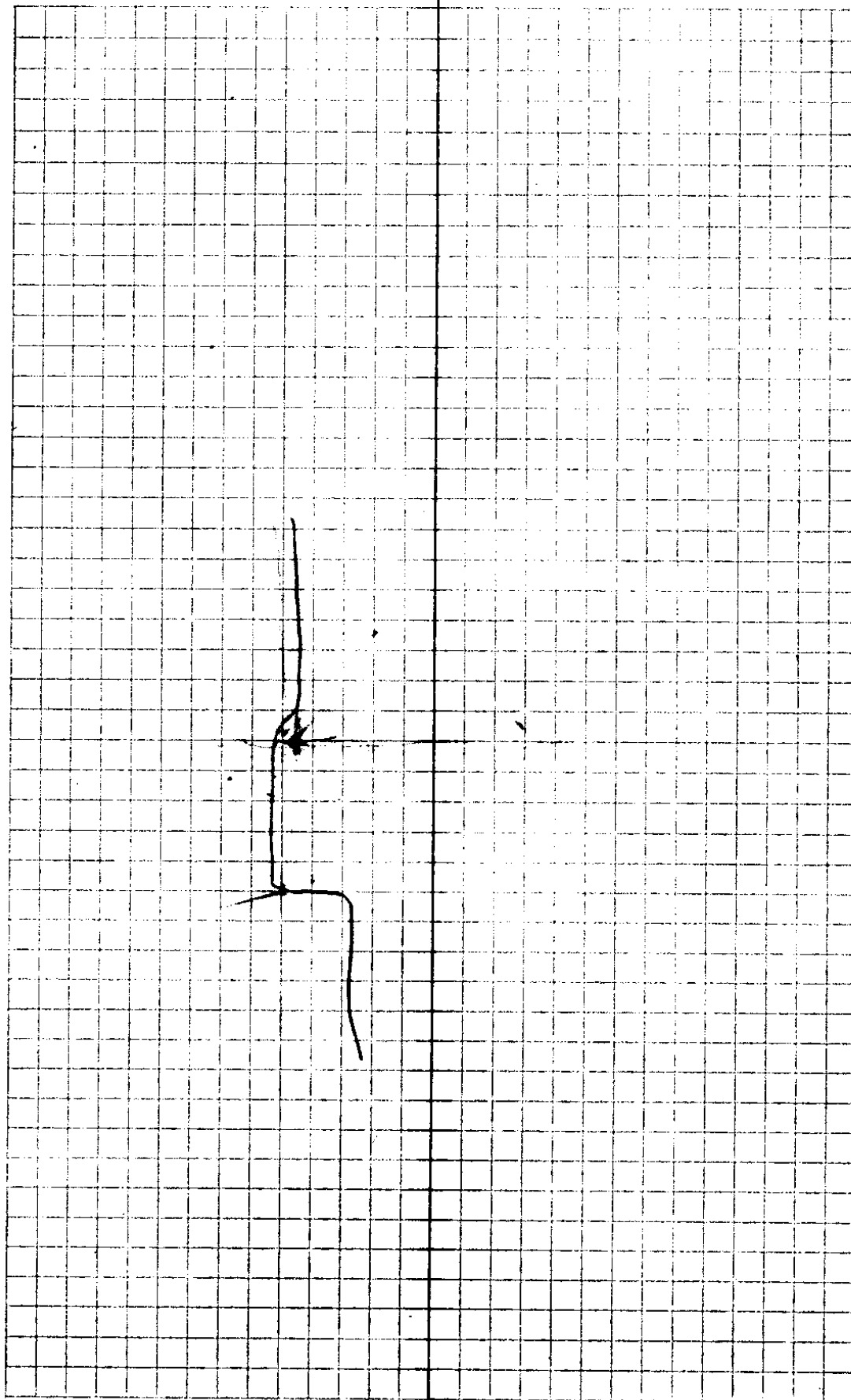
N 0° 26' W  
58

N 8° 15' W

99786  
99822 299666

C. S. File No. 37/203





C. S. File No. 37/203

Δ  
1704<sup>0</sup>

379<sup>2</sup>

+18°35' 81<sup>3</sup>  
L 300<sup>2</sup>

Δ

~~620~~  
824.8

1549

POT.

+11°30' 157<sup>5</sup>

Δ  
~~620~~

50

3°42' L

19.8

Δ 3

50°

7°2' R

Δ 2

3°42' L

4264

+9°10' 130<sup>1</sup>  
+6°42' 300

Δ

1437

POT.

+7°35' 145°

F

N 89°14' L

N

N 89°14' L  
~~N 89°14' L~~

G

97203

98325

1570

~~498625~~  
~~688275~~  
~~1474875~~  
~~15286875~~ ✓

18

99792

98723  
99317

128.4  
 297.951  
 426.4

99125  
175

~~495225~~  
~~396500~~  
~~99125~~  
~~113.73125~~ ✓

98723

1301

98723

296109

98723

128438623

97203

813

291609

97203

777624

79026039

300.2

3792



CS FILE FOLDER

CONTAINS

MORE

INFORMATION