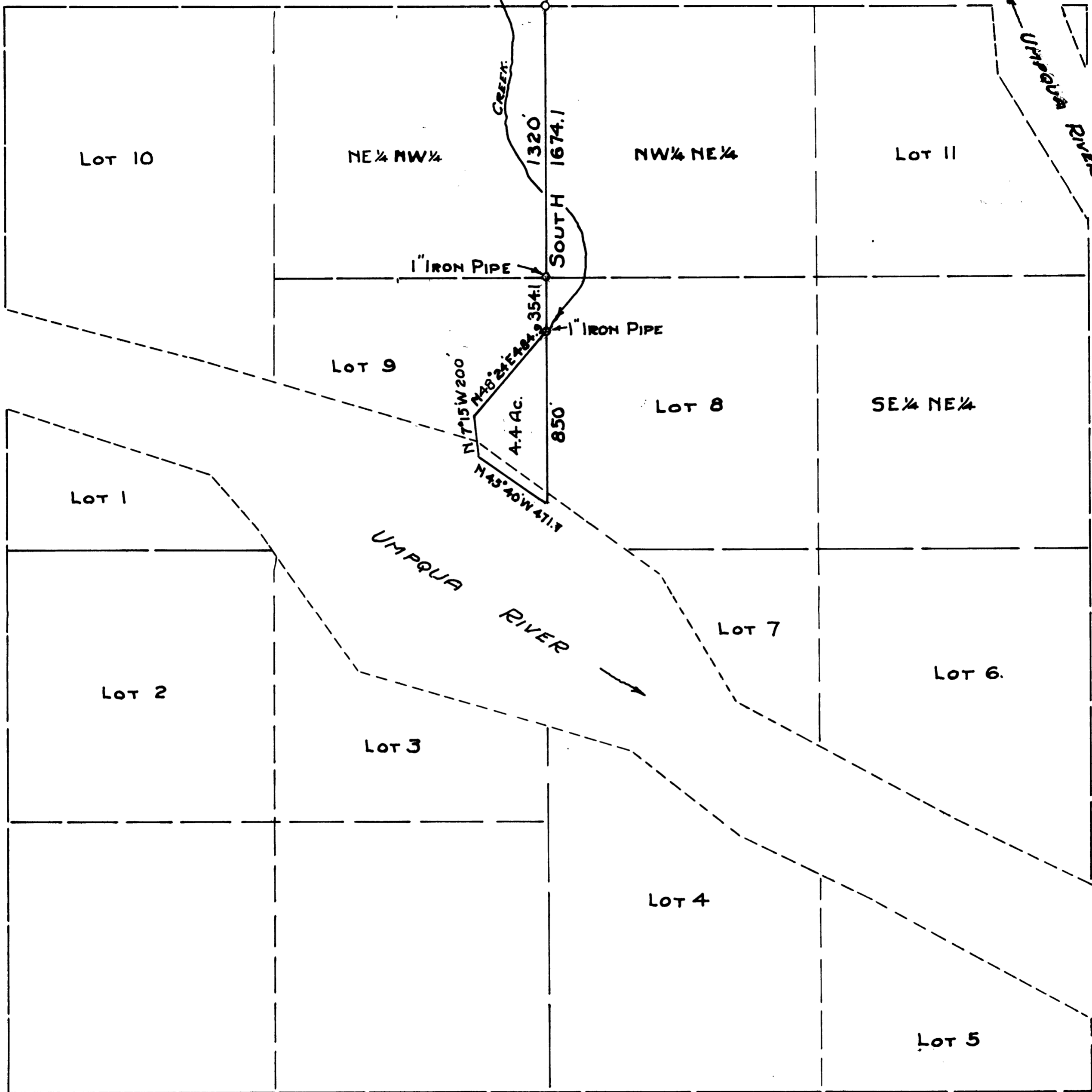


COUNTY SURVEYORS FILE DATA
DO NOT REMOVE FROM OFFICE

1/4 SEC. COR 1/4 18" FIR SCRIBED 1/4 S.
20" FIR S15° E 42' - 20" FIR N62° W 16'
ORIG. B.T. 30" FIR N40° W 34 lks.



PLAT OF
SECTION 14 T.24S, R.7W, W.M.
SHOWING DEED DESCRIPTION OF
T. E. HIGGINBOTHAM
BEN. B. IRVING - DEPUTY COUNTY SURVEYOR
ROSEBURG, OREGON.
NOVEMBER 17 1938 - SCALE 1"=400'

