

Recorded dimensions of tract 7.5 x 20 Chs.

$$\frac{7.5}{39.83} = \frac{x}{2641.2}$$

$$x = 499.8$$

SECTION CORNER 8-9-16-17.

4"x4"x36" CEDAR POST.

24" WHITE FIR S 80°W 13.8 ft.

12" WHITE FIR N 35°E 9.4 ft.

12" DOUGLAS FIR S 40°E 29. ft.

36" DOUGLAS FIR N 20°W 30.4 ft. (Original B.T.)

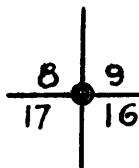
1/4 SECTION CORNER 9-16.

3/4"x16" IRON BAR 4"x4" FIR POST ALONGSIDE.

FIR 22" N 48°E 22.7 ft.

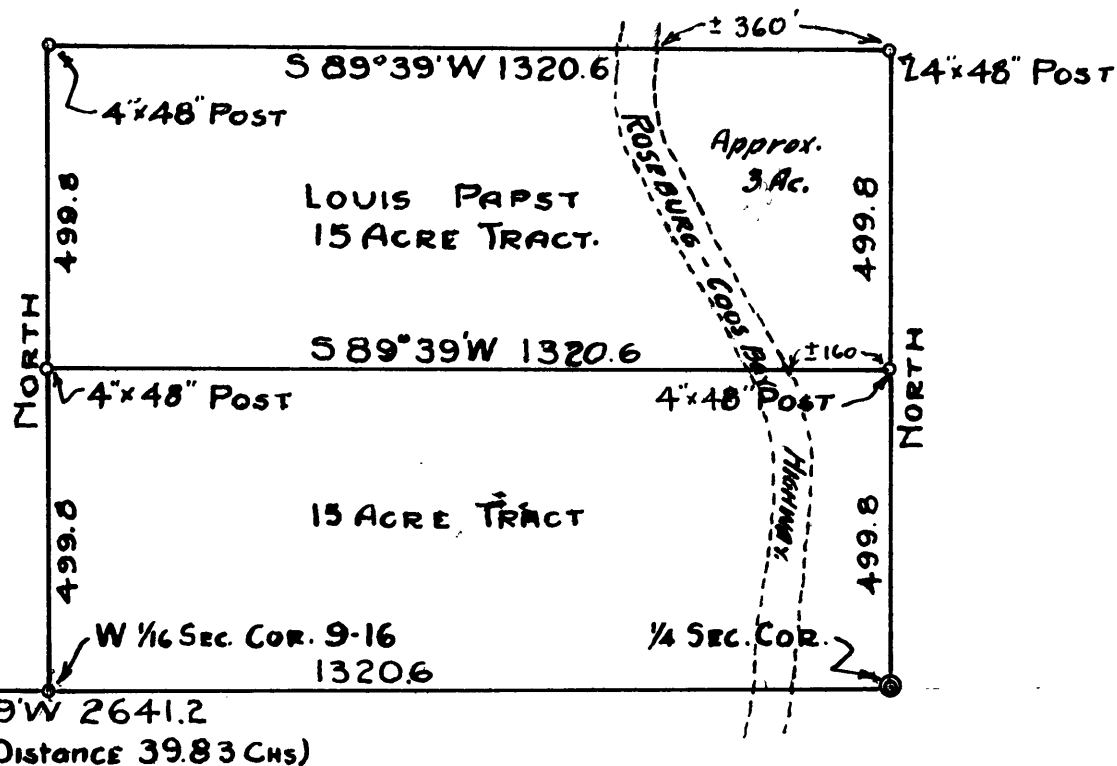
FIR 18" S 76 1/2°W 21.5 ft.

SANDSTONE BOULDER 8"x8"x5' mkd x 50 N 23 1/2°E 13.6 ft.



1320.6

S 89°39'W 2641.2
(Recorded Distance 39.83 Chs)



W 1/6 SECTION CORNER 9-16.

4"x4"x36" CEDAR POST.

10" FIR S 84°W 16.9 ft.

10" FIR N 55°W 28.2 ft.

**COUNTY SURVEYORS FILE DATA
DO NOT REMOVE FROM OFFICE**

SURVEY OF 15 ACRE TRACT OWNED BY
LOUIS PAPST
SE 1/4 SW 1/4 SEC. 9, T. 29 S., R. 8 W., W.M.

SURVEYED BY
BEN. B. IRVING DEPUTY COUNTY SURVEYOR
ROSEBURG OREGON
OCTOBER 25 1938
SCALE 1" = 300'