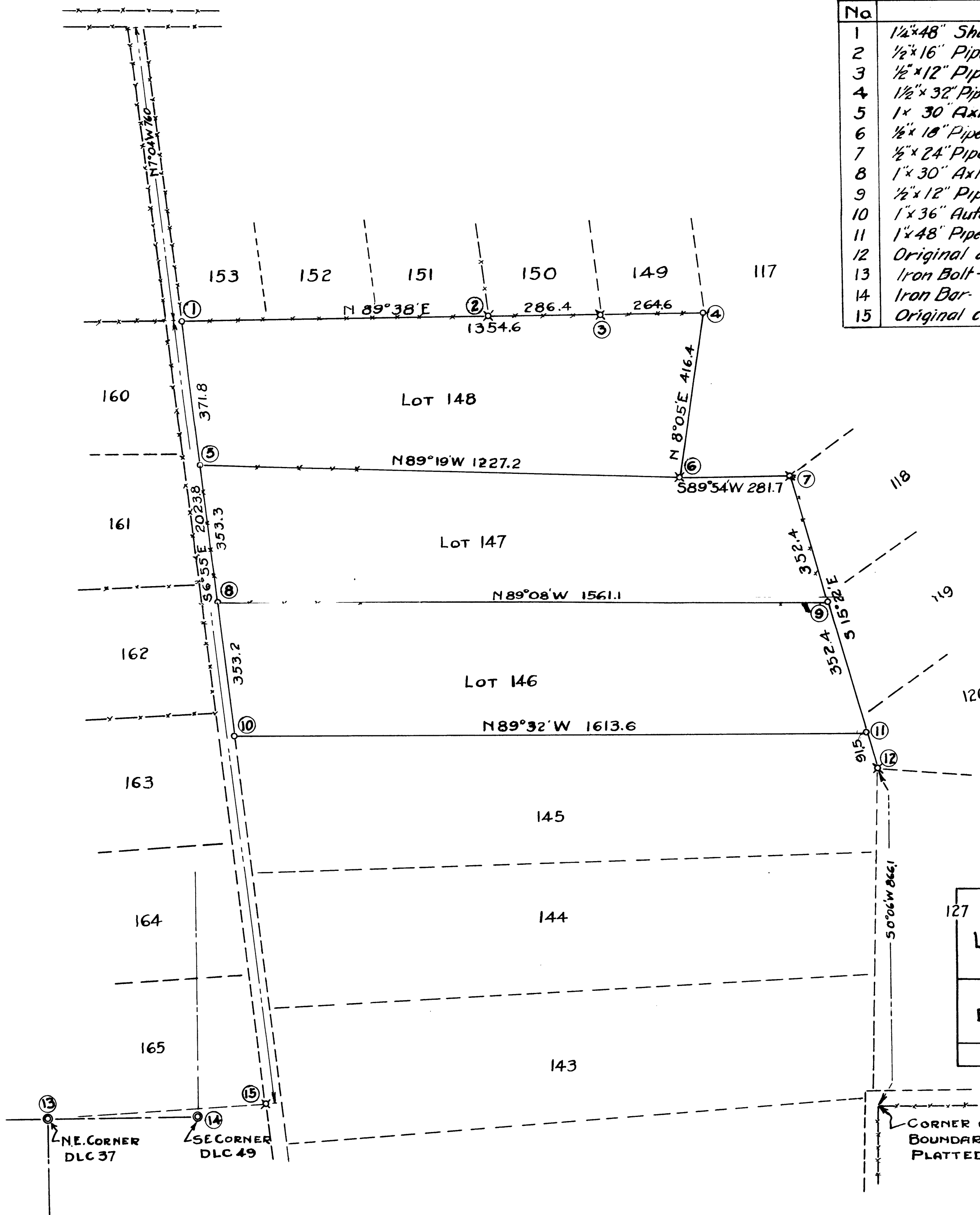


No	DESCRIPTION OF CORNERS
1	1/4"x48" Shaft driven 44" in the ground.
2	1/2"x16" Pipe driven alongside a fence Corner Post.
3	1/2"x12" Pipe alongside an original corner stake in place.
4	1/2"x32" Pipe, 24" in ground.
5	1"x30" Axle with hub, flush with ground.
6	1/2"x18" Pipe, alongside original corner stake in place.
7	1/2"x24" Pipe alongside original corner stake in place.
8	1"x30" Axle.
9	1/2"x12" Pipe, flush with ground.
10	1"x36" Auto axle, flush with ground.
11	1"x48" Pipe, 36" in ground.
12	Original corner stake in place.
13	Iron Bolt-12" White Oak S 34°30'W 33 ft.
14	Iron Bar-14" White Oak S 71°30'E 109 ft.
15	Original corner stake in place.



- ⊠ - Original Corner Stake in place
- - Corner Set
- - Donation Land Claim Corner

127 SURVEY OF  
 LOTS 146-147-148, FLAT I, TRACT I,  
 ROSEBURG ORCHARDS CO,  
 SURVEYED BY  
 BEN. B. IRVING DEPUTY COUNTY SURVEYOR  
 ROSEBURG, OREGON.  
 OCTOBER, 1938. SCALE 1"=200'

CORNER ON SOUTH  
 BOUNDARY OF  
 PLATTED TRACT.

**COUNTY SURVEYORS FILE DATA  
 DO NOT REMOVE FROM OFFICE**