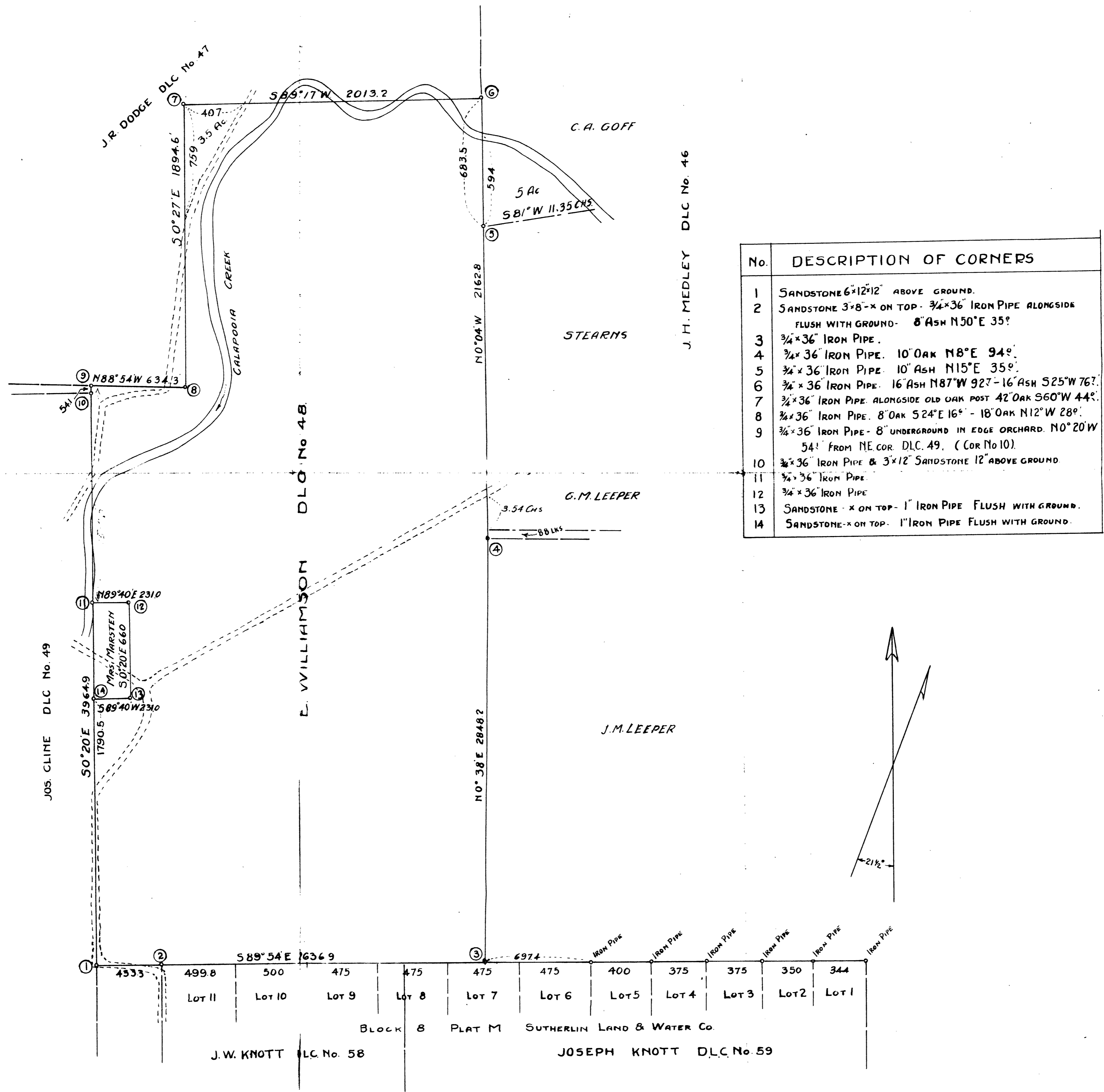


SURVEY OF THE
E. WILLIAMSON D.L.C. No. 48
T. 25 S., R. 6 W., W.M.

SURVEYED BY BEN. B. IRVING.
DEPUTY COUNTY SURVEYOR.
AUGUST 1938. SCALE 1"=400'



No.	DESCRIPTION OF CORNERS
1	SANDSTONE 6x12x12 ABOVE GROUND.
2	SANDSTONE 3x8-x ON TOP- 3/4x36" IRON PIPE ALONGSIDE FLUSH WITH GROUND- 8" ASH N50°E 35°
3	3/4x36" IRON PIPE.
4	3/4x36" IRON PIPE. 10' OAK N8°E 94°
5	3/4x36" IRON PIPE. 10' ASH N15°E 35°.
6	3/4x36" IRON PIPE. 16' ASH N87°W 927-16' ASH S25°W 767.
7	3/4x36" IRON PIPE. ALONGSIDE OLD OAK POST 42' OAK S60°W 44°.
8	3/4x36" IRON PIPE. 8' OAK S24°E 16° - 18' OAK N12°W 28°.
9	3/4x36" IRON PIPE- 8" UNDERGROUND IN EDGE ORCHARD. N0°20'W 54' FROM NE COR. D.L.C. 49. (COR No 10).
10	3/4x36" IRON PIPE & 3x12" SANDSTONE 12" ABOVE GROUND.
11	3/4x36" IRON PIPE.
12	3/4x36" IRON PIPE.
13	SANDSTONE-x ON TOP- 1" IRON PIPE FLUSH WITH GROUND.
14	SANDSTONE-x ON TOP- 1" IRON PIPE FLUSH WITH GROUND.