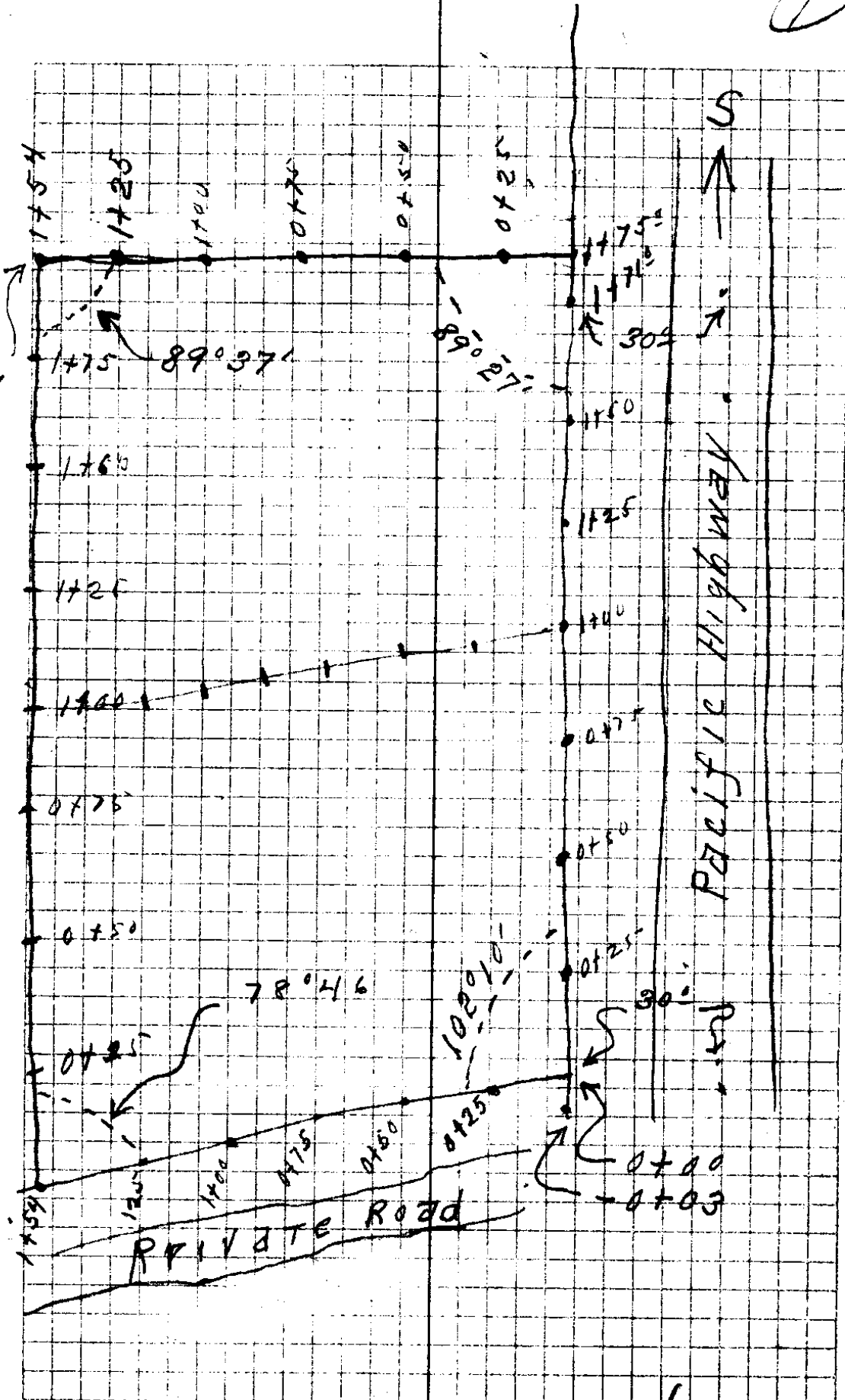


2+45.2



Sta

ASBURY

Rod

Elev

U.S.C. & G.S.

8.71 542.587

0.70

541.887

10.61 552.997

NW Corners 5 47.5 48.5 49.3 50.3 51.5 52.7

0+00 5.2 2.5 4.0 3.2 2.2 1.0 -0.2

0+25 46.2 47.2 47.9 48.8 49.7 50.6 52.1

0+50 45.2 54.6 46.2 47.5 48.2 49.2 50.7

0+75 44.2 45.3 45.9 46.9 47.7 48.7 50.1

1+00 42.9 43.2 44.2 45.3 46.1 46.8 54.8

1+25 41.2 42.4 42.9 43.2 44.1 45.2 46.9

1+50 40.2 41.4 41.9 42.8 43.4 44.7 45.6

1+75 41.2 42.4 42.9 43.2 44.1 45.2 46.9

South Line H.V. 41.2 43.3 43.5 44.2 45.2 54.5

Center H.V. 42.8 54.2 44.5 45.2 45.9 54.6

1+15 11.4 10.4 9.7 8.6 8.0 7.3 6.6 5.8

1+50 10.7 10.8 9.2 9.9 8.3 7.5

1+25 10.4 9.7 8.6 8.0 7.3 6.6 5.8

1+50 10.4 9.7 8.6 8.0 7.3 6.6 5.8

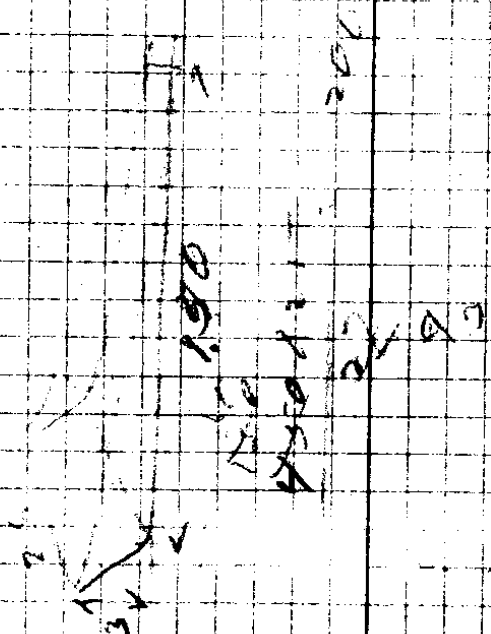
Asbury

533,877 E76 U.S.C. & G.S.

Hub = $\frac{106}{1+76}$ 5419

00 at NW cor.
 cut 3 feet in NE cor.
 fill 2 " " SW cor.
 " 1 " " SE cor.

175 $\left\{ \begin{array}{l} 5. \\ 5-30 \\ 5-25 \end{array} \right.$



C. S. File No. 37/192

37-192

C. S. File No. 37/192

Chained from 7° offset on SW
Cor. & Ran East an out East wire
fell 6.8 Feet. from out line making
12 foot error The old Fence is
2.8 Feet North of our SE Cor
So I moved the N.E. corner 2.8
feet North

SE

90° R

NE Cor

76-45 R East

Cor
NW

N 13-15 E

SW Cor
Δ 0

on High way

33° 33'

5m ca House

N 13° 15' E



1200 Pipe I Bar

NW 3/4" x 36" I.P.

12" B.O. marked RR

30° 32'
N 19° 15' E

3/4" x 36" I.P.

SE corner
1" x 36" I.P.
30" B.O. Bewys
N 65° E 50 feet

CS FILE FOLDER

CONTAINS

MORE

INFORMATION