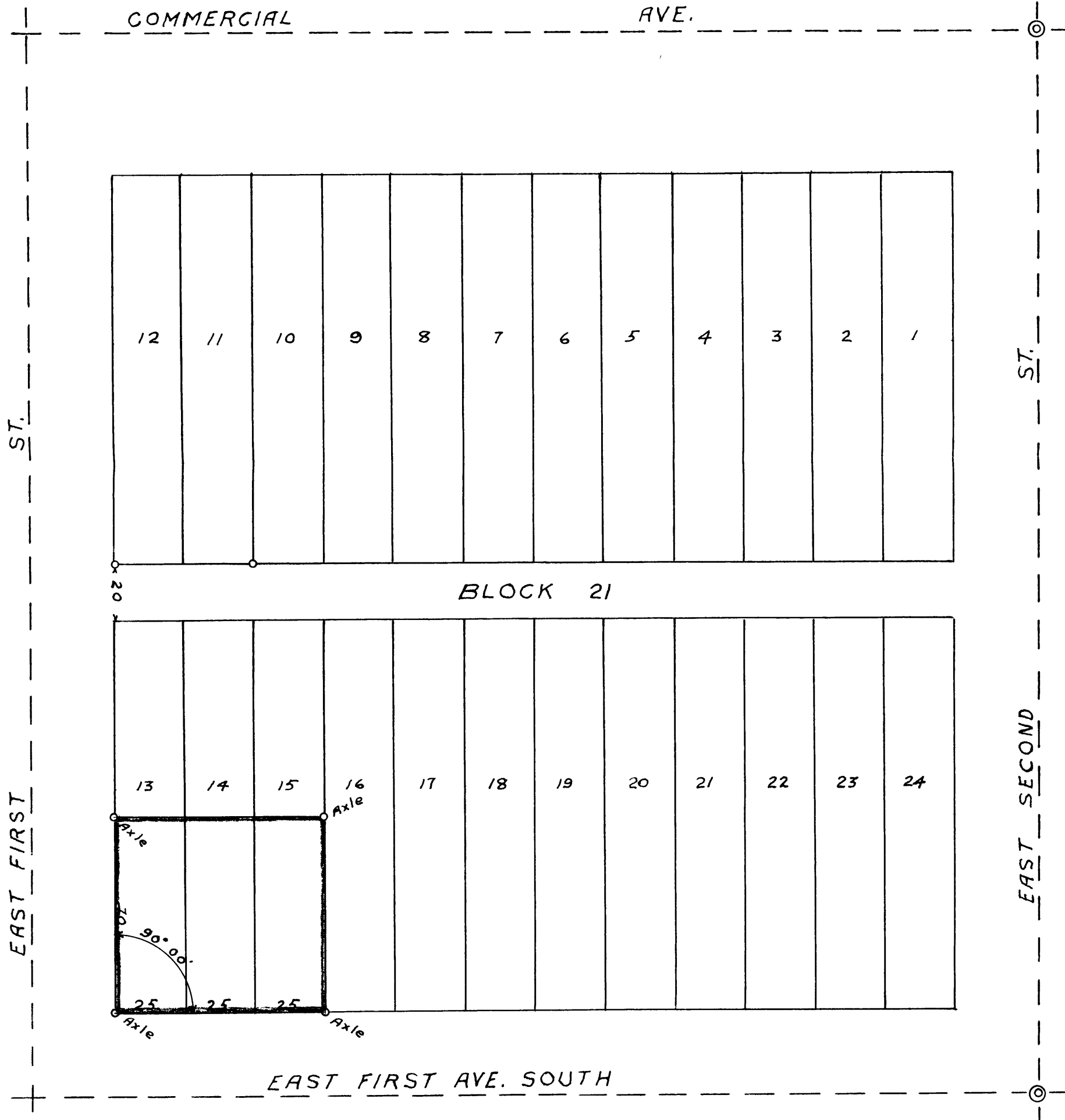
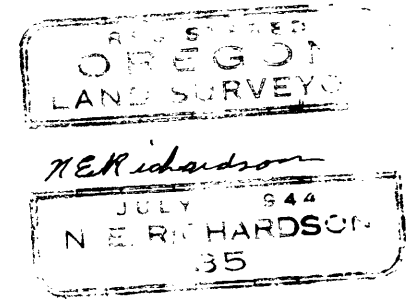


COUNTY SURVEYORS FILE DATA
DO NOT REMOVE FROM OFFICE

COUNTY SURVEYOR'S OFFICE
DOUGLAS COUNTY OREGON

L. R. CHAMBERS
S 1/2 LOTS 13-15 BLOCK 21
KINNEY'S ADDITION, ROSEBURG ORE

BEN. B. IRVING COUNTY SURVEYOR
Surveyed Sept. 9, 1946 by N.E. RICHARDSON Deputy.



SCALE 1" = 40'