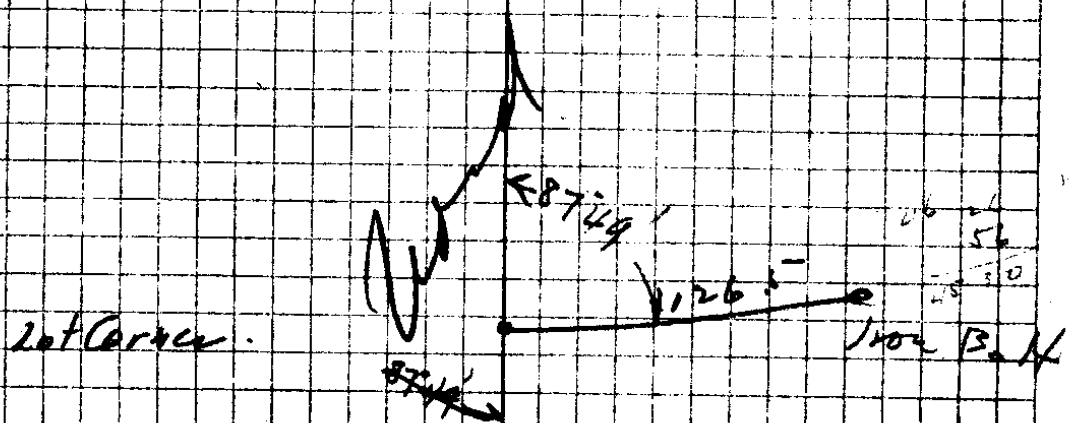


C. S. File No. 37/172



46 11  
32  
49' 7



Lot Corner.

Iron B.M.

Along boundary power Reserve.

As described in govt. field notes.

Along BT 30' Cedar  
545' 00" W.  
APIR CS BT

C. S. File No. 37/172

1 1/4 x 1/4 x 36° L Iron

120°

S 50° 24' W

1 x 1 x 42° L Iron

10° 24' R

109.7

1 1/4" L 24° Bolt

889

S 39° 40' W

Hub

5200 1/2

140°

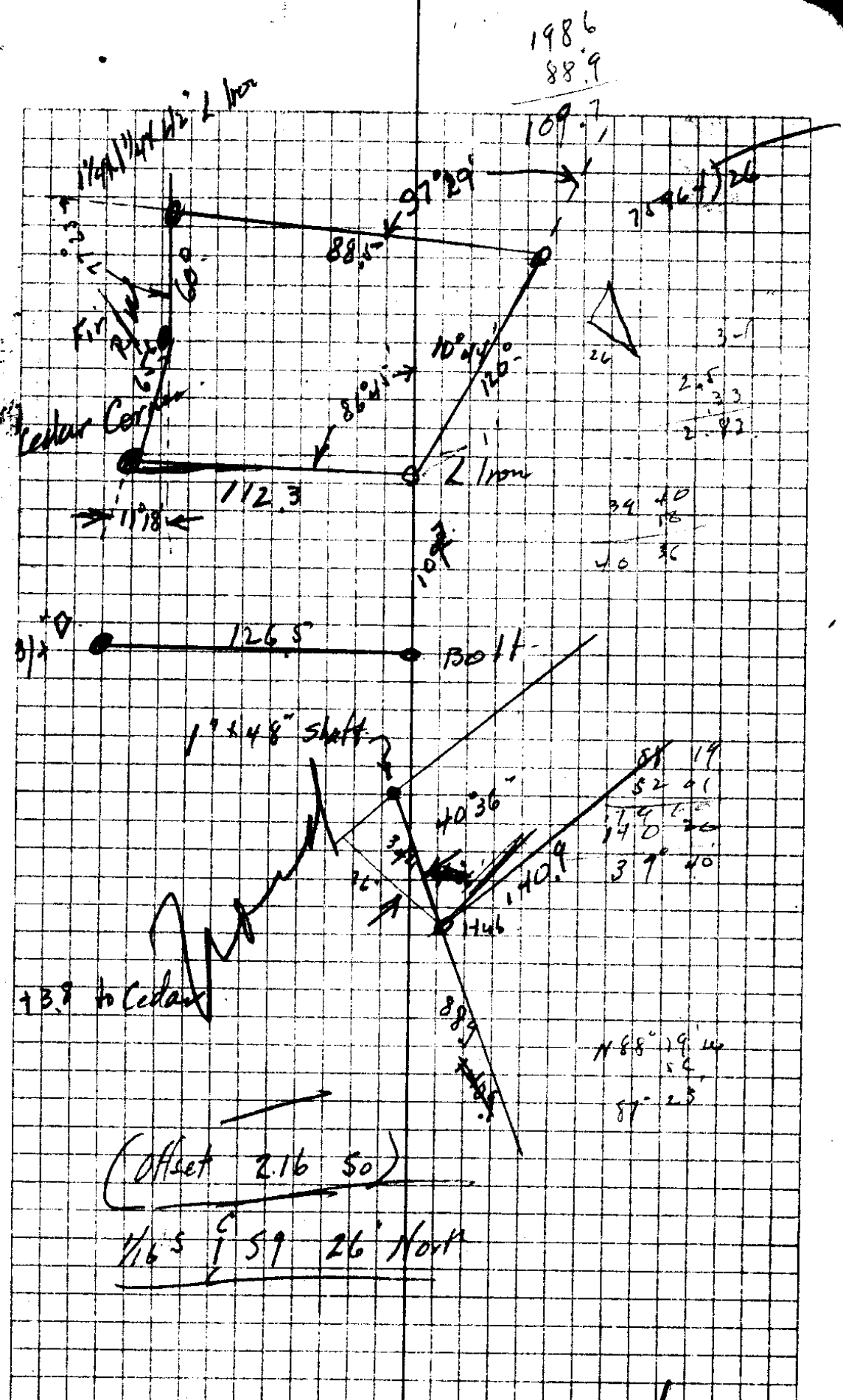
N 88° 19' W

Hub  
1/5 x 1/4 x 1/4  
1/6 x 1/4 x 1/4  
C

87° 25' L

N 0° 56' W

API PR

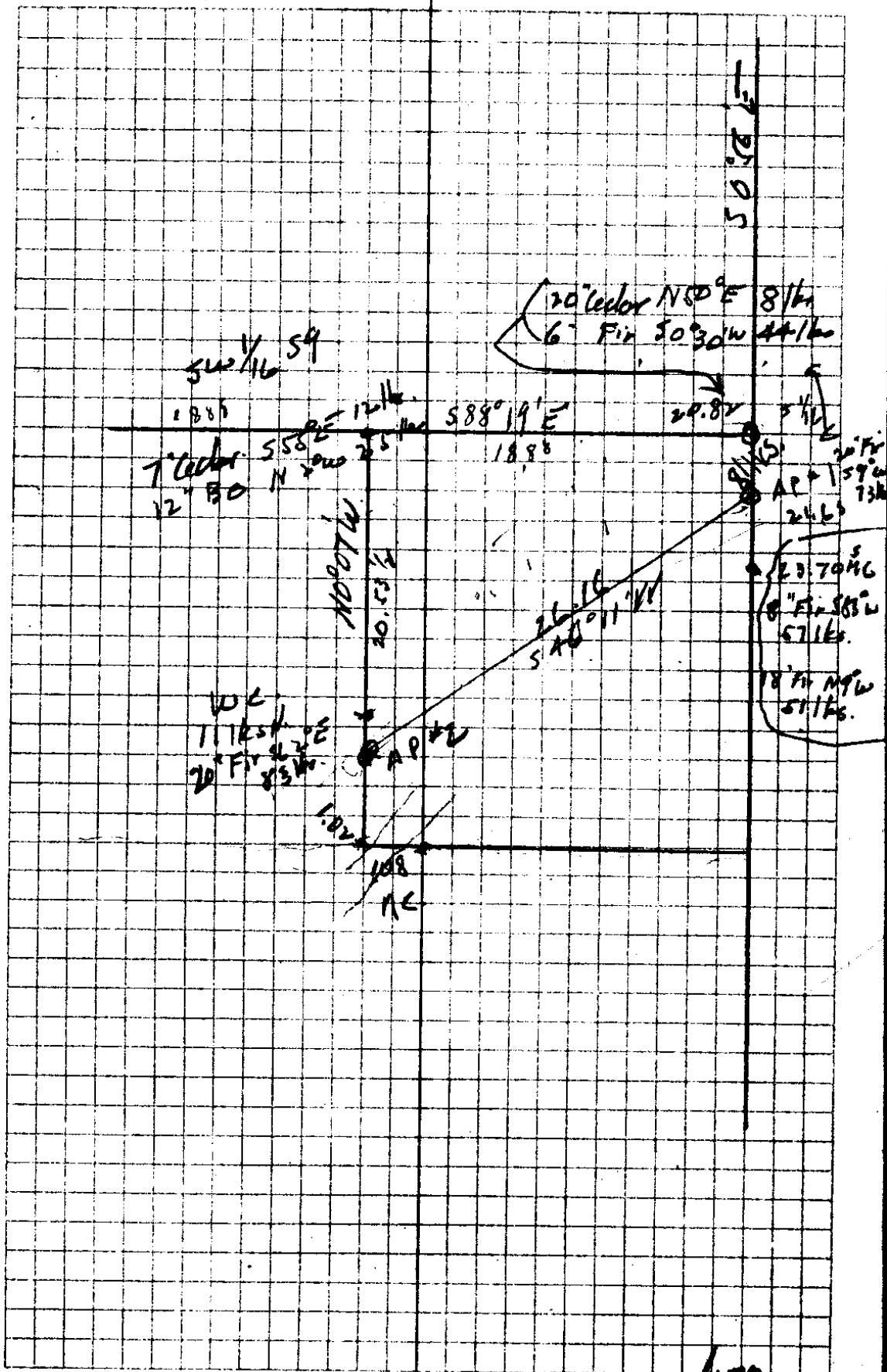


C. S. File No. 37/172

T26 SR3W Sec 9.  
Summer Home Sides SE 1/4 SW 1/4

May 16 1934

Irving T  
Richardson Ch.



C. S. File No. 37/172

Sta	Feet	Left	Right	cc.
1 1/4" x 24" Iron Bolt.				
	88.9	..		S 38° 40' W
Hub		53° 01'		
	140.9			N 88° 14' W
Hub		87° 23' L		
				N 0° 52' W
APIPR				
~~~~~				
Cedar Tree. 30" Dia				
	105.9			
3/4" x 3/4" x 36" Iron bar.				
	147.0			
APIPR			47° 07' R.	
				50° 52' E
5 1/16" C				

88.9

S 38° 40' W

Hub

53° 01'

140.9

N 88° 14' W

Hub

87° 23' L

N 0° 52' W

APIPR

Cedar Tree. 30" Dia

105.9

3/4" x 3/4" x 36" Iron bar.

147.0

APIPR

47° 07' R.

50° 52' E

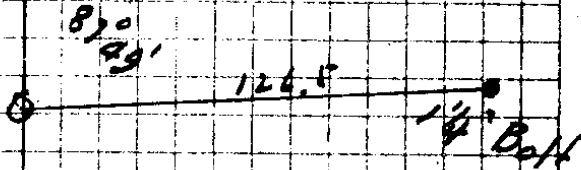
5 1/16" C

T26SR3W Sec 9. SE + SW "

Mr. Jordan Dead Descriptions

2.16' Sa of 1/16 Sec Cor NE Cor SE + SW + Sec 9.  
2.83 back to 1" x 48" Iron bar. to tree  
line

o Cedar Tree



As called for Court field Notes

As called for Court field Notes. BT destroyed

New BT 30" Cedar S45°W

C. S. File No. 37/172

Cedar Tree 30"

65.6

N 65° 50' E

Fir Tree

11° 18' R

60

N 54° 32' E

1 1/4 x 1 1/4" Angle Iron 77° 23' L

88.5

S 48° 05' E

1 1/4 x 1 1/4" Angle Iron 97° 29'

120.0

S 49° 24' W

1 x 1 1/4" Angle Iron

10° 44' R

109.7

1 1/4 x 2 1/4" Iron Bolt ' PAT

5.15





CS FILE FOLDER

CONTAINS

MORE

INFORMATION