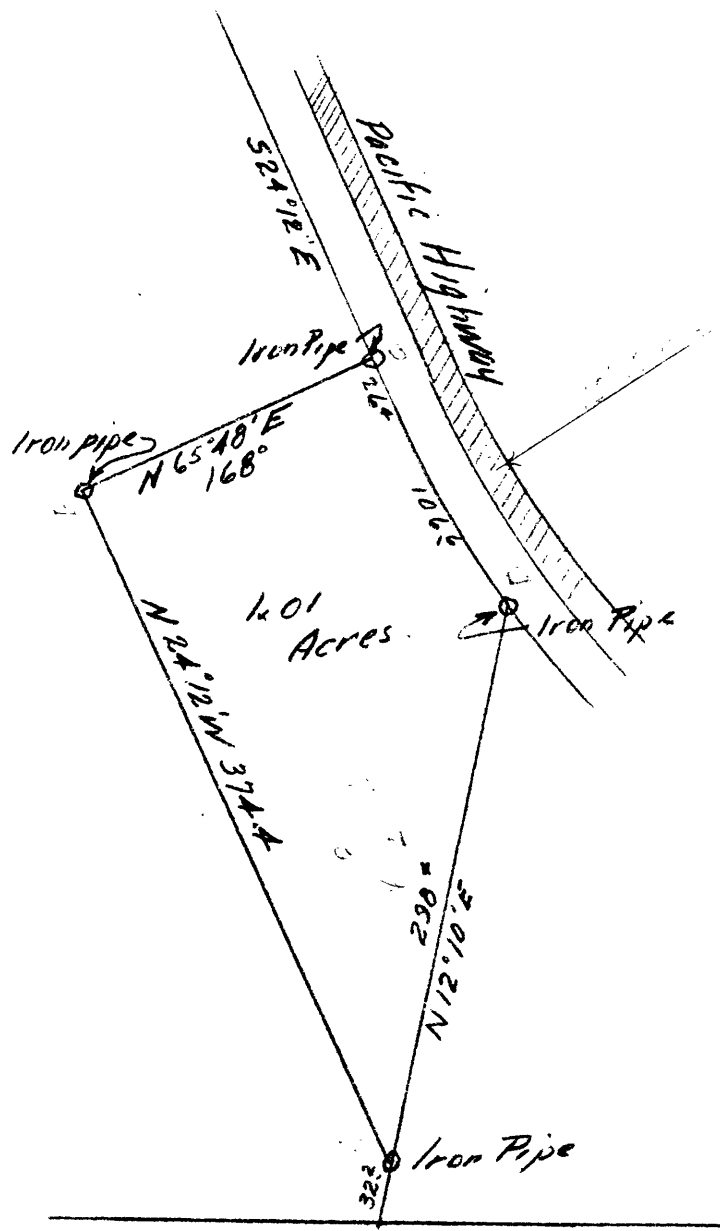


COUNTY SURVEYORS FILE DATA
DO NOT REMOVE FROM OFFICE

37/157

Deed Description
for
WRIGHT & GIBSON
SEC 18 T27S R5W
Surveyed by Ben Bluvins
Deputy County Surveyor
April 29 1933

SCALE 1' = 100'



NE Corner DLC No 38
T27S R5W

C.S. 37/157
FILE 157 DRAWER 37