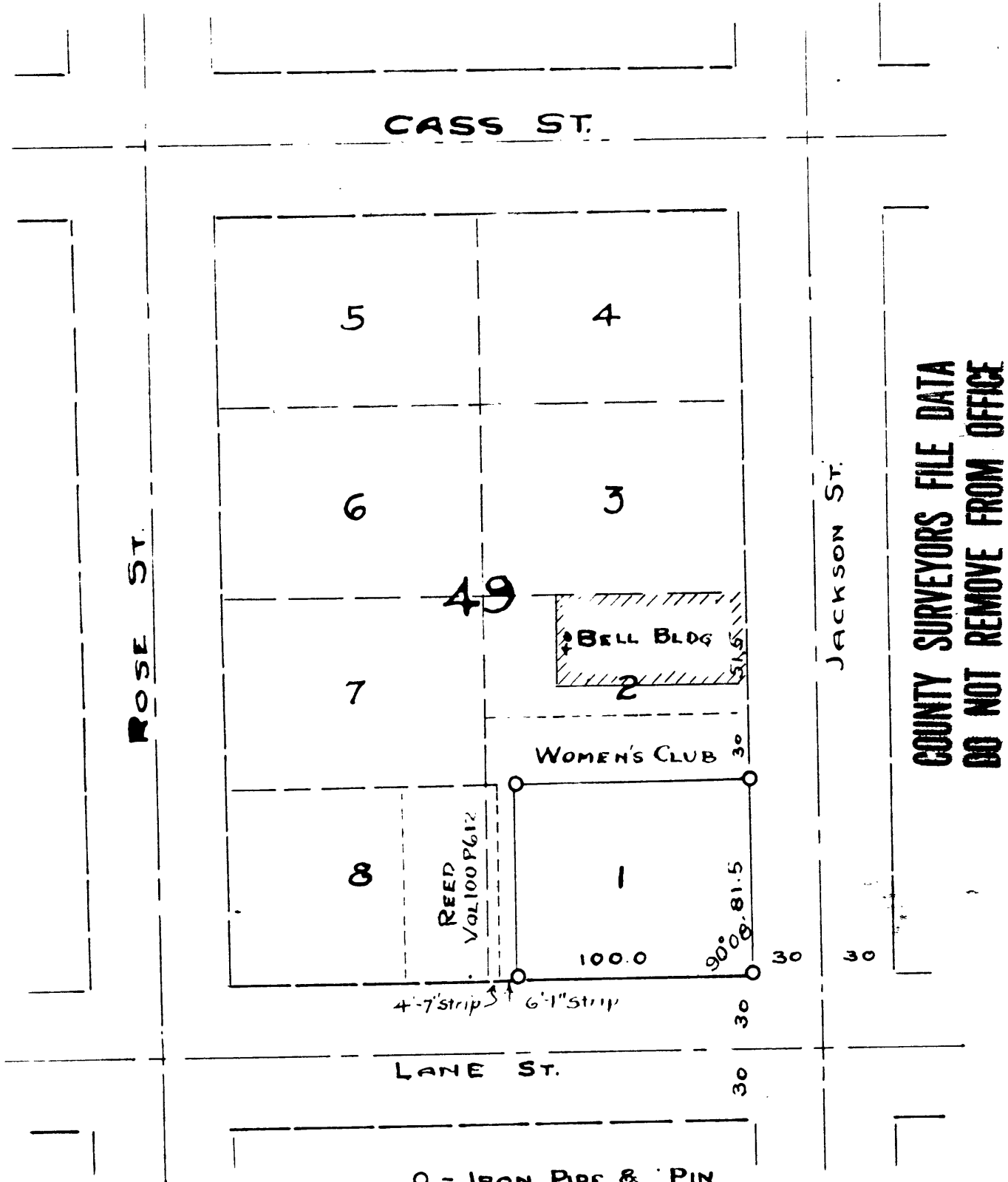


CITY OF ROSEBURG OREGON
PART OF LOT 1 BLOCK 49

SURVEYED BY BEN B. IRVING
CIVIL ENGINEER & SURVEYOR
ROSEBURG, OREGON.



COUNTY SURVEYORS FILE DATA
DO NOT REMOVE FROM OFFICE

JUNE 6 1941

SCALE 1" = 60'