

Sec. Cor. X Post  
 16" Black Oak N78°30'E 39' Old BT.  
 14" Fir 580°30'E 59' ft.  
 8" Black Oak N23°18'W 210' ft.  
 24" Black Oak N23°18'W 210' ft.

1/4 Sec. Cor. 2" x 3/8" iron pipe  
 14" Black Oak N22°0'E 72' ft.  
 12" Cedar 566°0'W 54' ft.

1/4 Sec. Cor. iron pipe in road at Wimitred's  
 36" black oak 570° E 40' ft.  
 24" Fir 53° E 34' ft. (tree cut stump remains)

Sec. Cor. 2" x 3/8" iron pipe  
 18" Fir 54°30'W 275' ft.  
 30" White Oak 514°15'E 211' ft.  
 15" White Oak 547°45'E 611' ft.

1/16 Sec. Cor. 2" x 3/8" iron pipe  
 30" maple N 36°55'W 297'

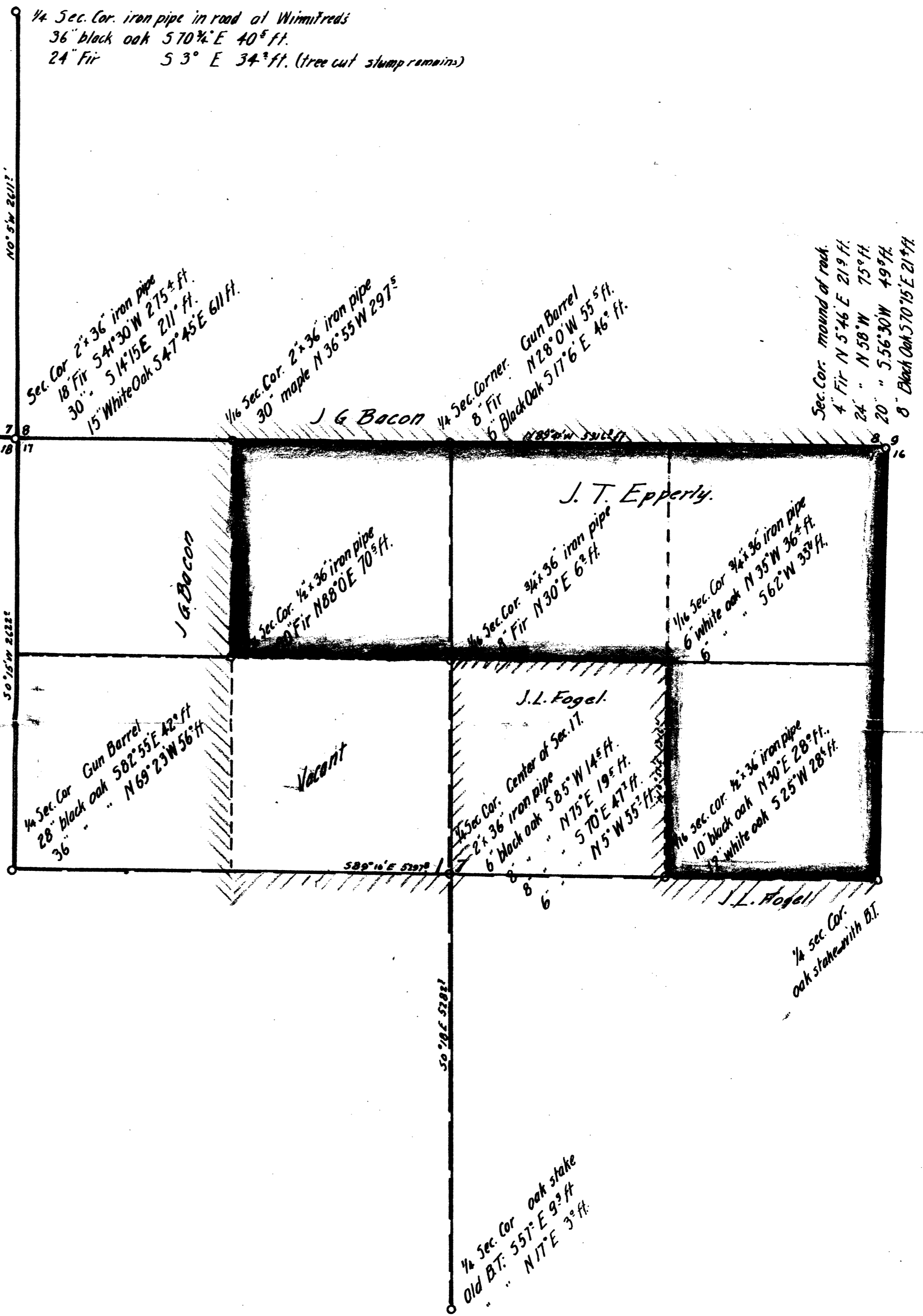
1/4 Sec. Corner Gun Barrel  
 8" Fir N28°0'W 55' ft.  
 6" Black Oak 517°6'E 46' ft.

Sec. Cor. mound of rock  
 4" Fir N 5°46' E 219' ft.  
 24" " N 58° W 75' ft.  
 20" " 556°30'W 49' ft.  
 8" Black Oak 570°15' E 214' ft.

Map of Property of  
**J. T. EPPERLY**  
 SECTION 17 T.26S. R.6W. W.M.  
 Office of  
**BEN. B. IRVING**  
 Civil Engineer and Surveyor  
 Scale 1" = 500'  
 Surveyed August 1926. Plotted Aug 21, 1926

Beginning at the NE. corner of section 17 I ran a traverse west. On this traverse I found old line blazes but no corners until I reached the NW. corner of section 18. I then ran a traverse from the 1/4 section corner common to sections 7 and 8, to the 1/4 section corner common to sections 17 & 18. This last corner I relocate from one original B.T. The missing corners were reestablished by proportional distances. The center of the section was established at the intersection of line connecting the 1/4 section corners at the opposite sides of the section as determined by traverses between the respective corners. The traverse through the north half of the section was then run and the 1/16 section corners located. A description of all corners established is indicated on the map together with a description of old corners found

*Ben. B. Irving*



C.S. FILE. 37/105  
 MAP FILE. M 28/29

C.S. FILE. 37/105  
 MAP FILE. M 28/29

COUNTY SURVEYORS FILE DATA  
 DO NOT REMOVE FROM OFFICE