

C. S. File No. 8766

Survey of J.W. Humphrey Property  
 Wilbur, Ore. Dec. 22, 1925  
 by Ben B. Goring to J.W. Humphrey Chain

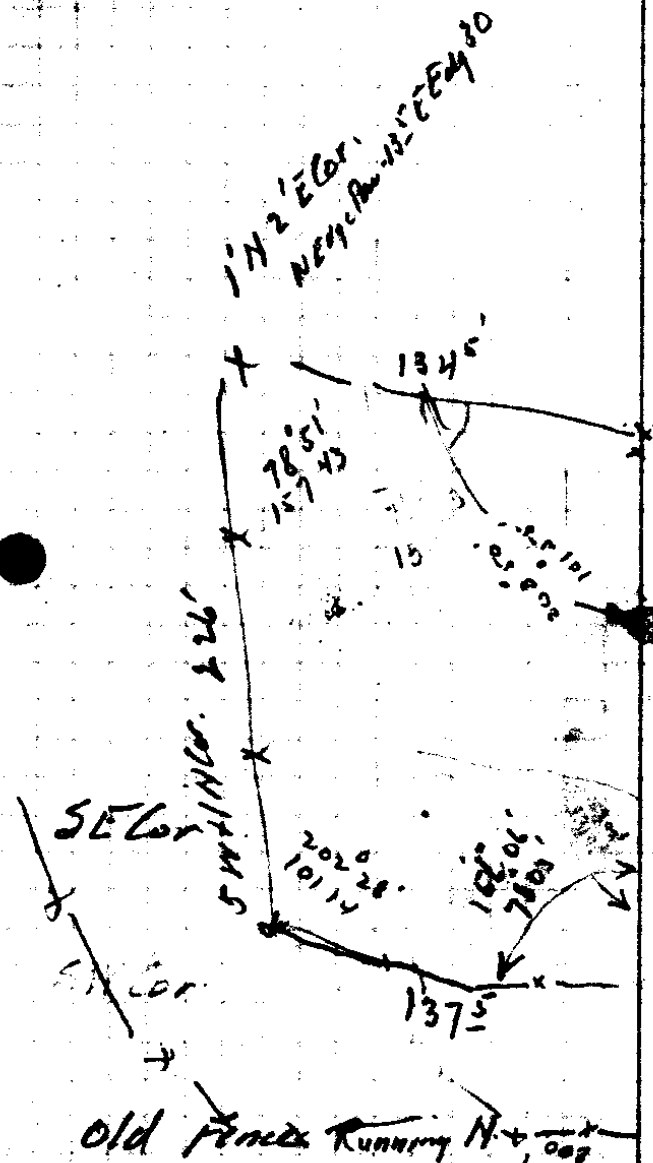
Sta.	Dist	L.	Bearing
B	137 <sup>5</sup>		S 12° 04' W
E	226'	78° 16' L	N 89° 40' W
D	134 <sup>5</sup>	101° 09' L	N 11° 29' E
C	219 <sup>3</sup>	78° 05' L	
B	127 <sup>8</sup>		
A	269 <sup>2</sup>		N 89° 34' E
Sec Cor.		89° 34' R	

B.S. on Twp line South

3968  
2191  
6159

78.51  
157.43  
78.51

78.51  
157.43  
78.51



2' E-3' S of Cor.  
N edge Paul's Edge 29'

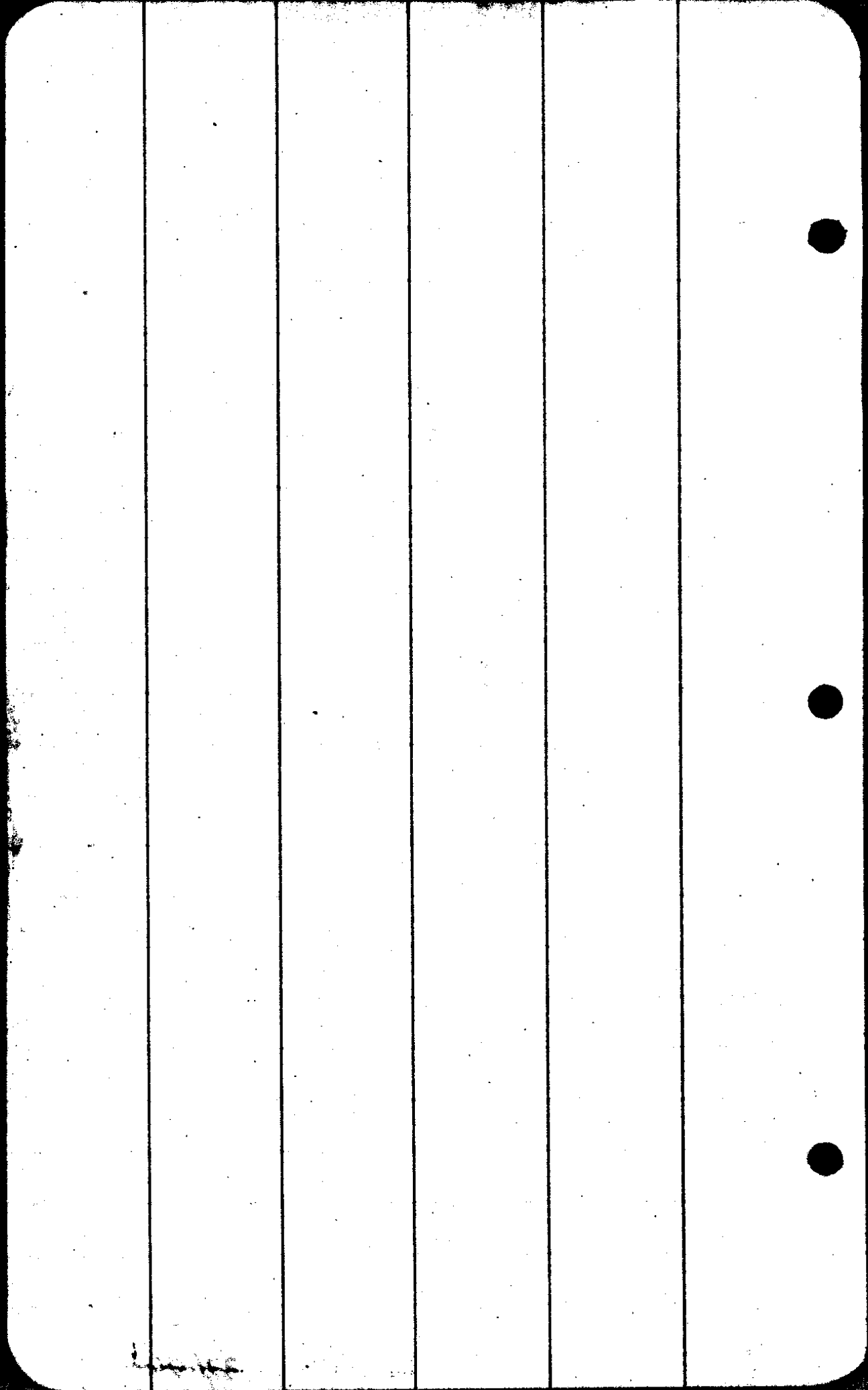
SIN Cor. 3 1/2 N.

Sec. Cor  $\frac{12}{13} | \frac{7}{18}$  T 26 S R 546 W W = Mer.

Fence Intersection, known as Sect. Cor B.S.

Along old fence on top line. Found ~~shallow~~ ash stump  
N 13 W. at proper dist for Orig Bt. sbook ground from roots.

C.S. File No. 37





Beginning at a point, the S.W. Corner  
of the tract, from which the S.W. Corner  
of Section 7 T26S R5W MN. is  $388^{\circ} 59' W$   
 $369'$  ft., Thence  $N 89^{\circ} 36' E 224'$  ft to the  
west line of the R/W of Pacific Highway;  
Thence  $N 11^{\circ} 51' E 130'$  ft along said  
west line of the Pacific Highway R/W.  
Thence  $N 89^{\circ} 40' W 219'$  ft Thence  
 $S 14^{\circ} 02' W 134'$  ft to point of beginning  
containing 26.5 Acres more or less

88/106- Affidavit  
B.B.I. to Public

C.S. File No. 37/86

Sta.

Dist

Long

Bearing

6.182

31968

2169

179° 07'  
89° 34' R N 89° 34' E

0900 12/2  
Sec. 15/18

South

5

CS FILE FOLDER

CONTAINS

MORE

INFORMATION