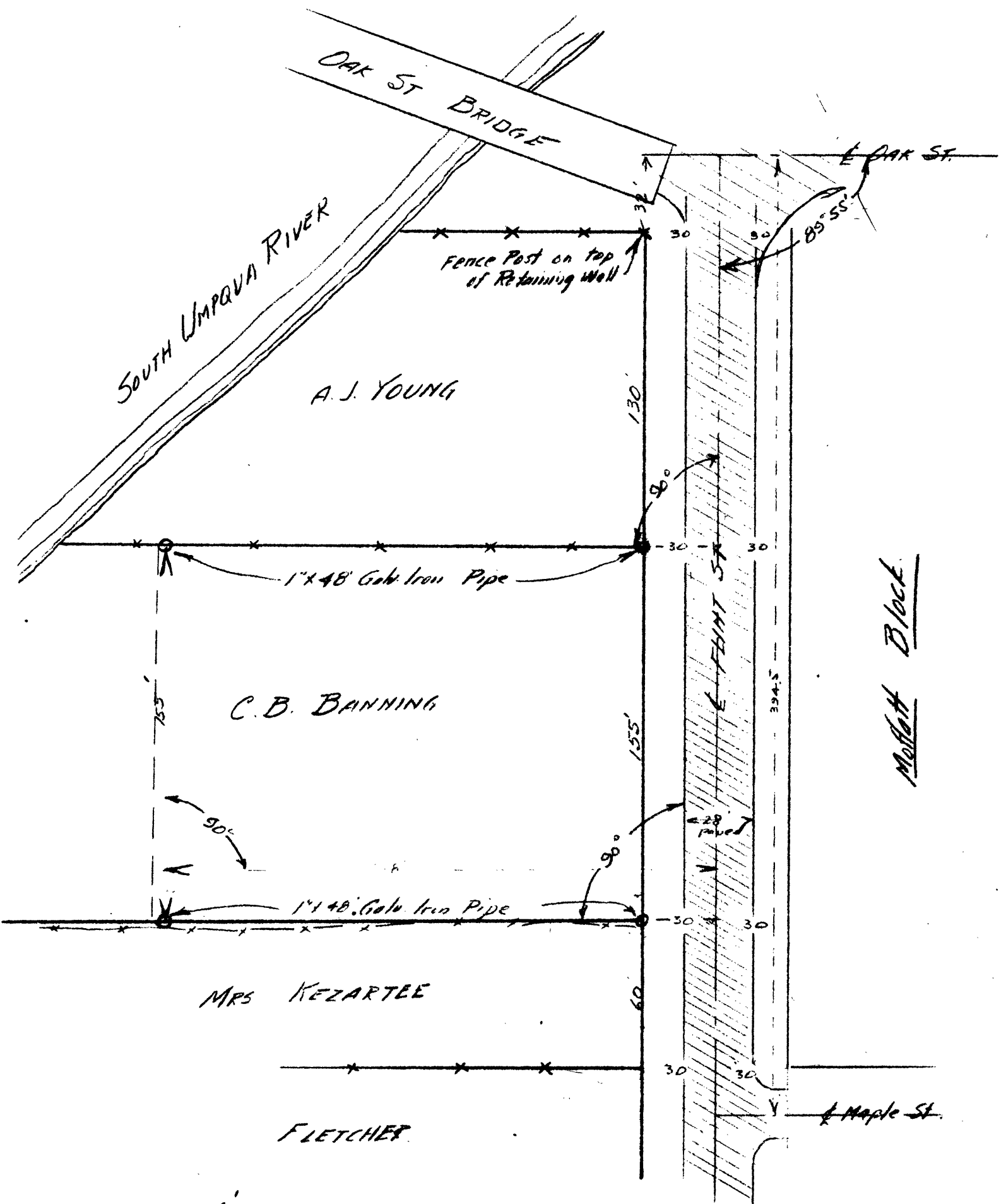


COUNTY SURVEYORS FILE DATA
DO NOT REMOVE FROM OFFICE



SCALE 1" = 50'

PLAT OF SURVEY
FOR
C.B. BANNING.

made by
BEN B. IRVING { City Engineer
Deputy County Surveyor

Jan. 7, 1933
ROSEBURG, OREGON.