

Cal. Ore Power Co.

Nov. 18 1932

Water Main R/W in
and thru Edenbower.

T275 R6W

Cal. Ore Power Co

$$19.25 \text{ chs} = 1270.5 \text{ ft}$$

$$1270.5 \times \tan 22^{\circ} 52' =$$

$$1270.5 \times .42173 = 535.8$$

$$1270.5 \div \cos 22^{\circ} 52' =$$

$$1270.5 \div .92141 = 1378.9$$

Note: - Desc. of pipeline R/W.

calls beginning point N 1925ft
in one place and later 19.25chs.

Using the latter figure and computing
triangle and measuring 535.8 ft
along North line D.C. 56, places
Δ over center of pipe. Turned
angle shown. Checks within 4'
pipe line on Res. hill
as built many years ago. S2P2E

A

112° 52'

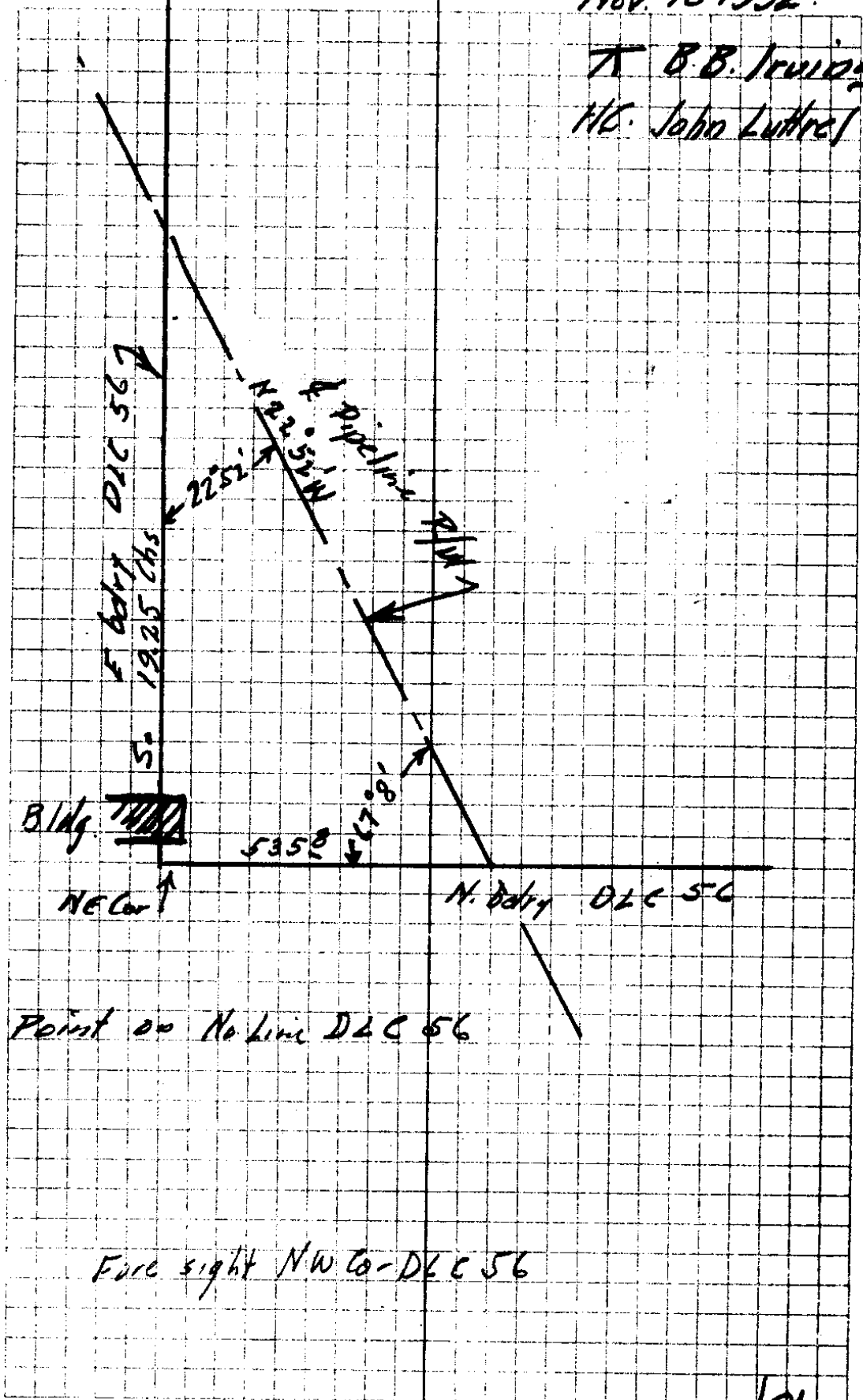
535.8

N

NE Cor D.C. 56

Nov. 18 1932.

T. B. B. Irving
H.C. John Luttrell



C. S. File No. 37/8

