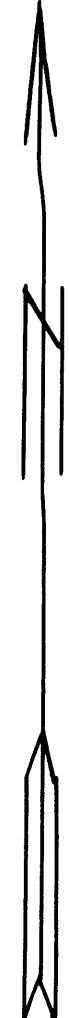
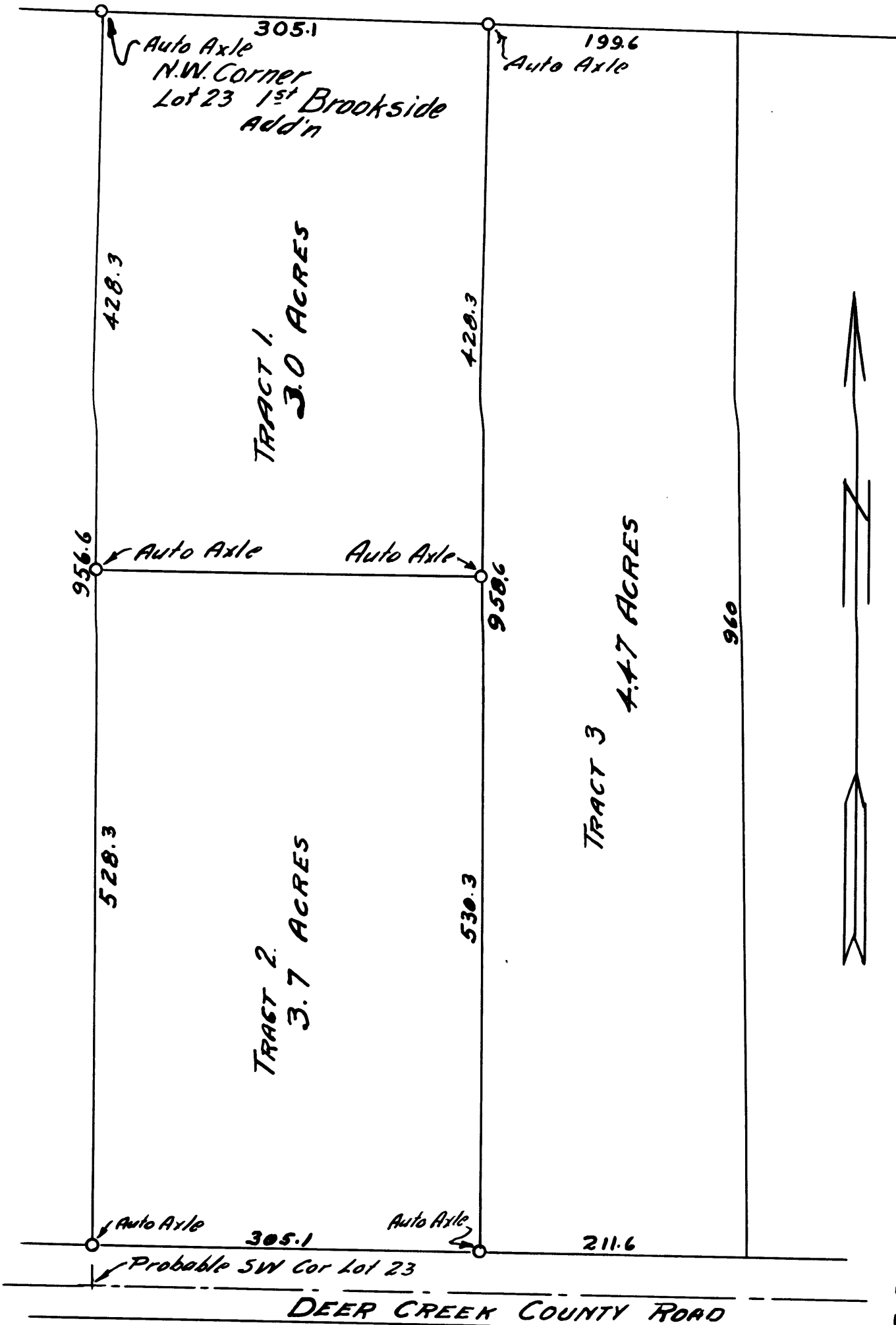


COUNTY ROAD



PLAT OF DEED DESCRIPTIONS
 LOTS 23 & 24, 1ST BROOKSIDE ADDITION
 ROSEBURG, OREGON.
 MARCH 29, 1934 SCALE 1" = 100'
 BEN. B. IRVING DEPUTY COUNTY SURVEYOR.

COUNTY SURVEYORS FILE DATA
 DO NOT REMOVE FROM OFFICE