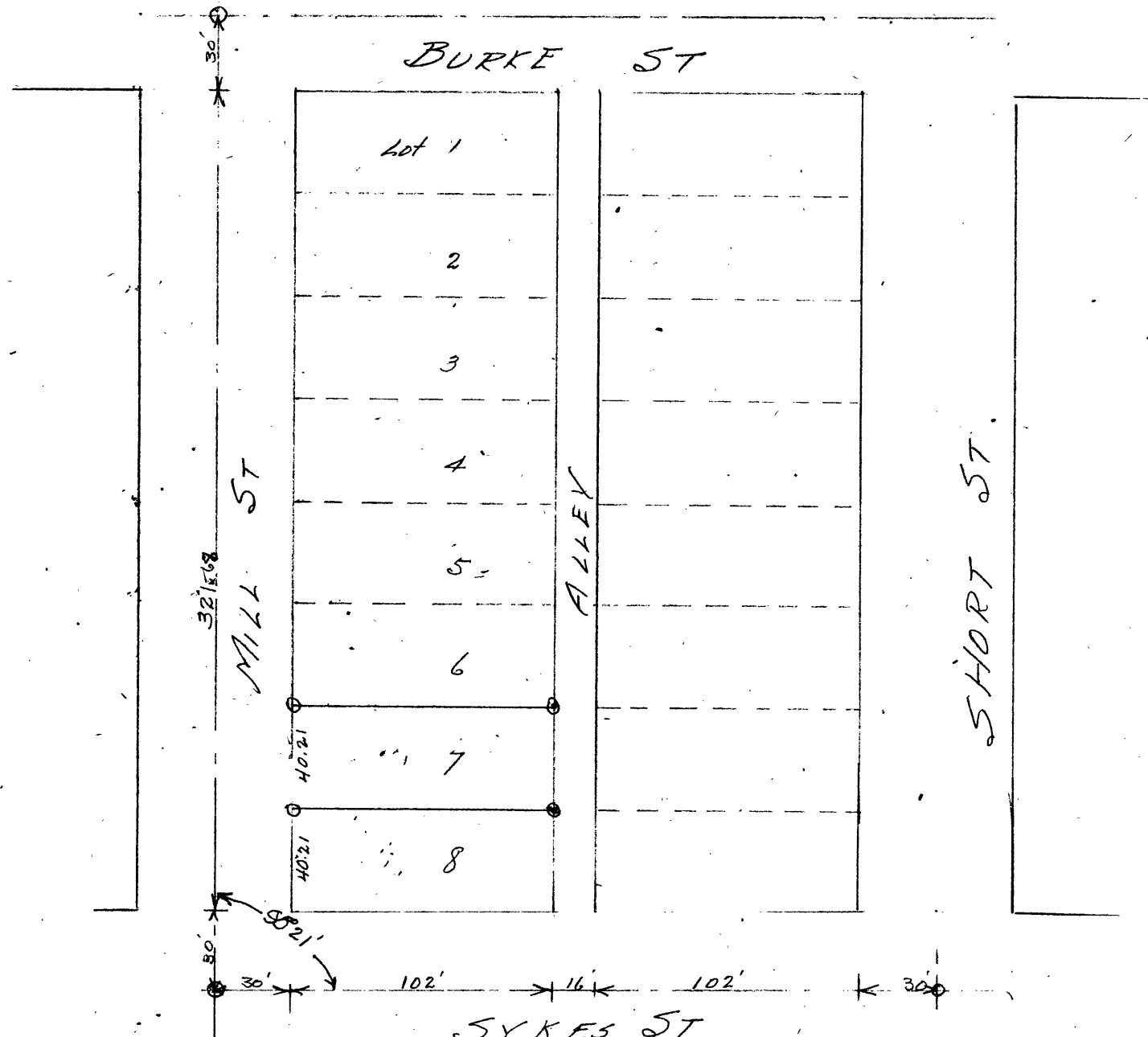


COUNTY SURVEYORS FILE DATA
DO NOT REMOVE FROM OFFICE



BLOCK 87 LOT 7
SOUTHERN ADDN TO ROSEBURG
SURVEYED AUG 17 1931
BEN B. IRVING, DEPT. CO. SURVEYOR
Scale 1" = 60'

P. C. B. 37/59