

Orig. Sec. Cor.

5
4 Not to scale,
Tie-East, 475.7'
3/4" Iron Bar, 18" long
8
9

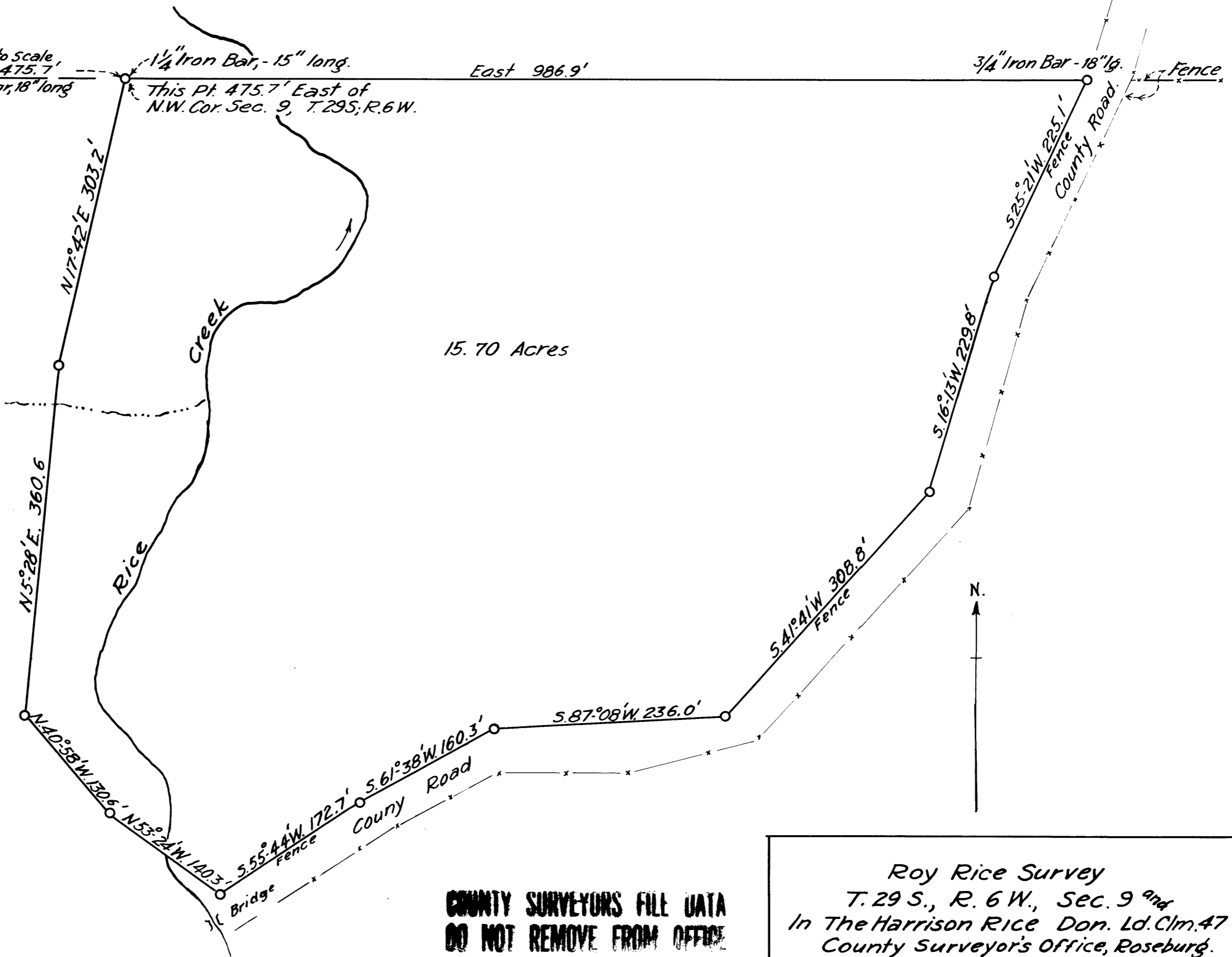
W. Line Harrison Rice Don.
Land Claim No. 47.

1/4" Iron Bar, - 15" long.
This Pt. 475.7' East of
N.W. Cor. Sec. 9, T. 29 S., R. 6 W.

East 986.9'

3/4" Iron Bar - 18" lg.

Fence



15.70 Acres

**COUNTY SURVEYORS FILE DATA
DO NOT REMOVE FROM OFFICE**

Roy Rice Survey
 T. 29 S., R. 6 W., Sec. 9^{9th}
 In The Harrison Rice Don. Ld. Clm. 47
 County Surveyor's Office, Roseburg.
 Surveyed & Platted by A. Boyer.
 Oct. 28, 1931
 Scale, 1" = 100 ft.