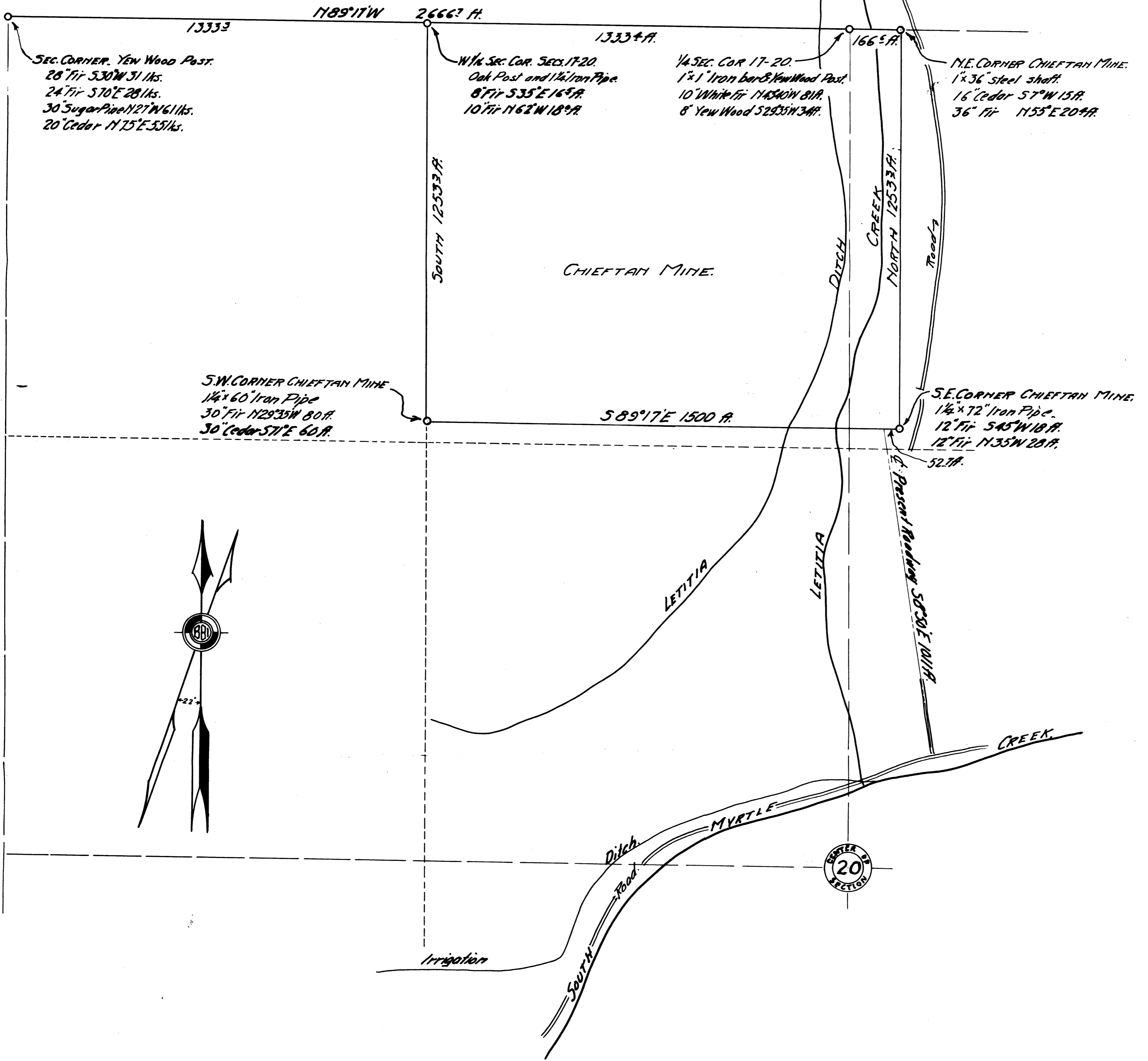


PLAT OF THE  
CHIEFTAN MINE

IN THE  
NW 1/4 SECTION 20 T.29S, R.3W, W.M.  
DOUGLAS COUNTY, OREGON.

AS SURVEYED BY  
BEN. B. IRVING, DEPUTY COUNTY SURVEYOR  
JUNE 26-28, 1930.

SCALE 1 INCH = 200 FEET.



SEC. CORNER, YEW WOOD POST.  
28" Fir S30°W 31 lks.  
24" Fir S70°E 28 lks.  
30" Sugar Pine N27°W 61 lks.  
20" Cedar N15°E 35 1/2 lks.

W 1/4 SEC. COR. SECS. 17-20.  
Oak Post and 1 1/2" Iron Pipe.  
8" Fir S35°E 165 ft.  
10" Fir N62°W 189 ft.

1/4 SEC. COR. 17-20.  
1 1/2" Iron bar & Yew Wood Post.  
10" White Fir N45°W 81 ft.  
8" Yew Wood S29°35'W 34 ft.

N.E. CORNER CHIEFTAN MINE.  
1 1/2" 36" steel shaft.  
16" Cedar S7°W 15 ft.  
36" Fir N55°E 204 ft.

S.W. CORNER CHIEFTAN MINE.  
1 1/2" x 60" Iron Pipe.  
30" Fir N29°35'W 80 ft.  
30" Cedar S71°E 60 ft.

S.E. CORNER CHIEFTAN MINE.  
1 1/2" x 72" Iron Pipe.  
12" Fir S45°W 10 ft.  
12" Fir N35°W 20 ft.  
52 ft.

