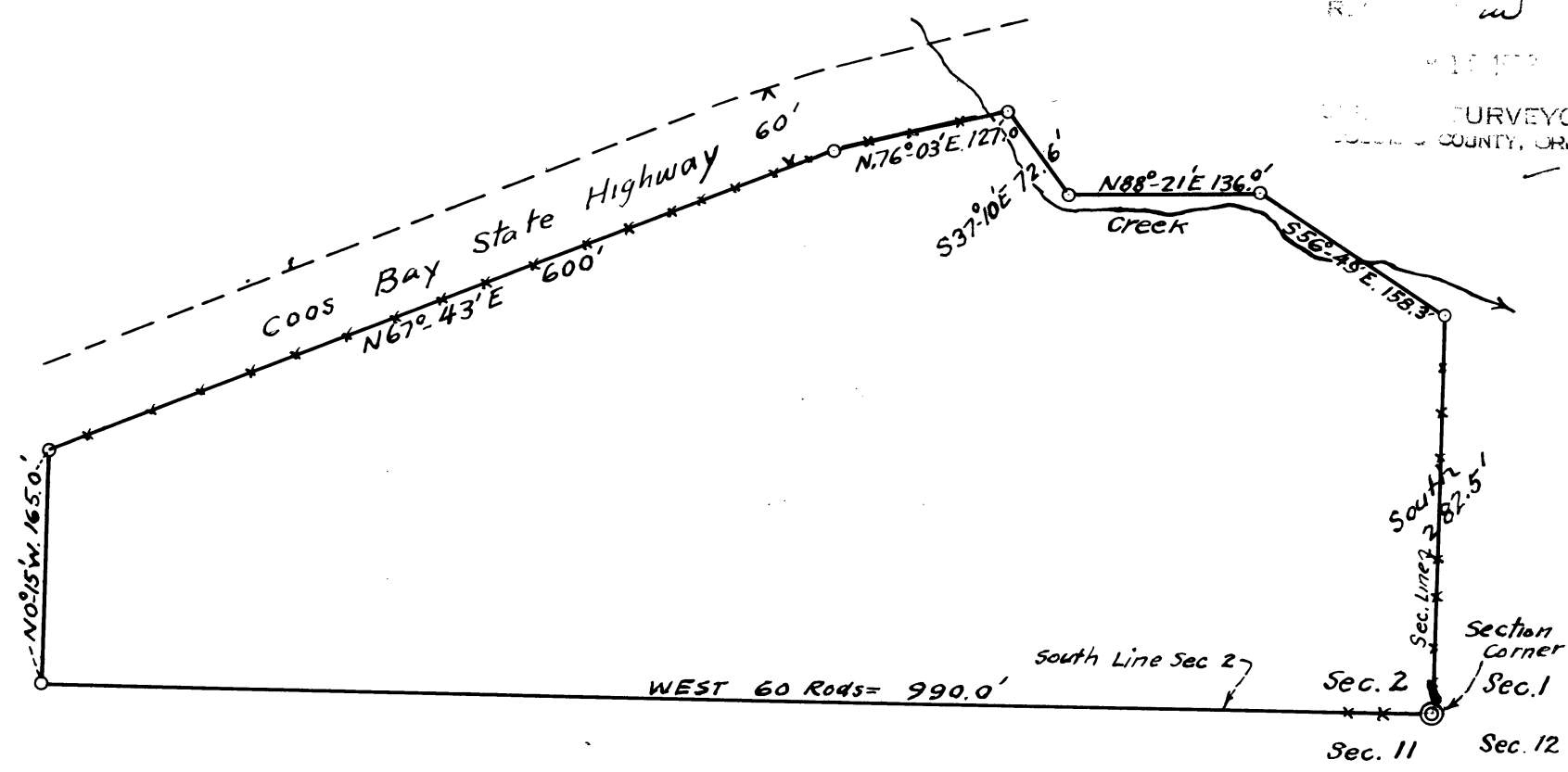
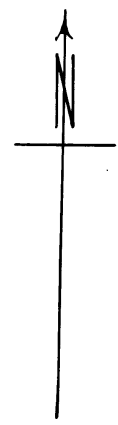


FILED
 R. J. Boyer
 COUNTY SURVEYOR
 COOS COUNTY, ORE.



COUNTY SURVEYOR'S OFFICE, ROSEBURG, ORE
 PORTION OF JOHN ORR PROPERTY
 IN SE $\frac{1}{4}$ SE $\frac{1}{4}$ Sec. 2, T29S; R8W. Wil. Mer.
 Aug 1942 ABoyer Dep. Scale, 1" = 100 ft.

36/59
 C.S. FILED

CS FILE FOLDER

CONTAINS

MORE

INFORMATION