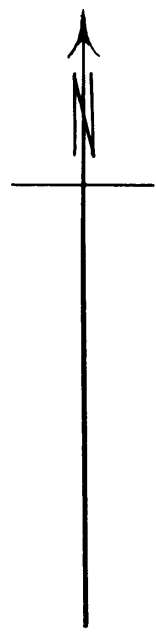


6.7 Ac ±



2849'
N.W. Cor. Wm T. Perry
D.L.C. 38, T.27S, R.5W

N LINE PERRY D.L.C. 38

BEGINNING OF DESCRIPTION
250' S & 2849' E of the
NW. Cor. of the Wm. T. Perry
D.L.C. 38, T.27S, R.5W, W.M.

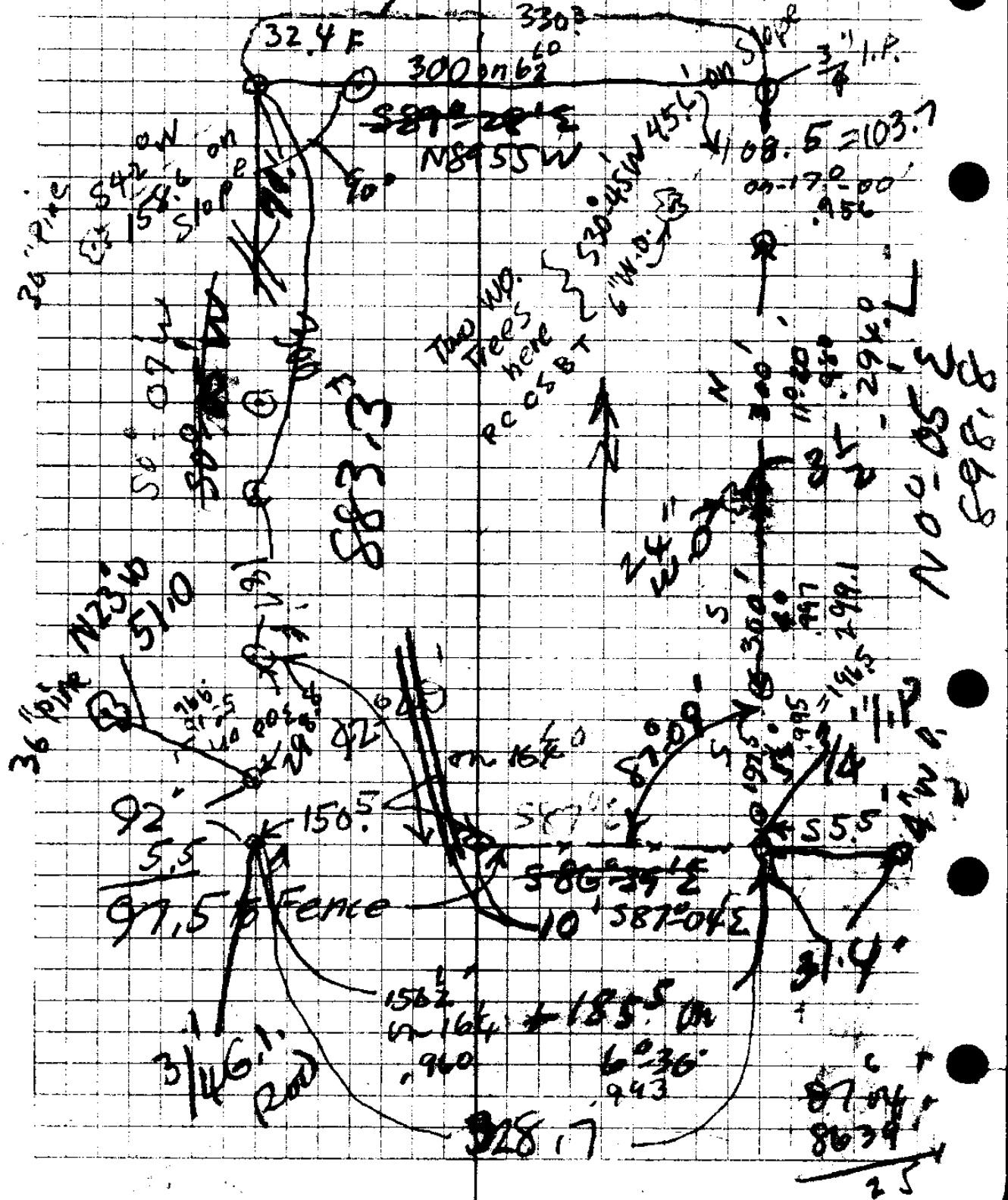
N. LINE 4th AVE. N; 1st ADD TO
KINNEYS IMPROVED PLAT,
ROSEBURG, ORE.

COUNTY SURVEYOR'S OFFICE, ROSEBURG, ORE.
MRS. LEONA CREASON KOFF TO
ROSEBURG LUMBER CO.
6.7 Ac ± IN SEC. 18, T.27S, R.5W, W.M.
AUG. 1942 Boyer Dep. Scale, 1"=100 ft.

Set up
at NW
corner
of this
survey

Thurs Aug 20-42

9:07-15 AM
38°50' Vert
21°03' Horiz
S67°05' E to SW
East to B.S.



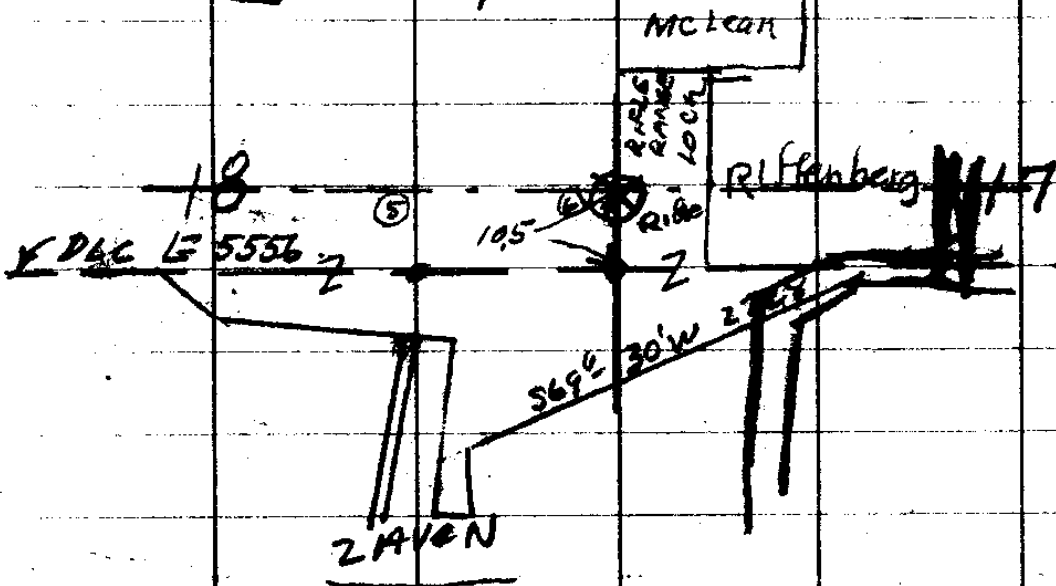
36-52

NE Cor 38 } 15" B.O. S 35 W 120' }
 } 12" " N 45 W 66' }

W 56.16 = Line bet 17 & 18 - 10.5 chs S
of 1/4 Post.
125.68 = Cor.

HLE { 1/4 Cor bet 17 & 18
 7" B.O. N 38 W 100' L = 71.3
 4" " S 70 E 111' L = 73.3
 24" Pine S 56 W 225' L = 148.5
 on Ridge Not scribed

27/5



N 16° E 55.3 cross on both end steps
S 42 1/2° E 5.4' to TACKS in Maple
S 10° E 17' E 126.8' to St MM

27/5

36/52

11 = B.T - MAPLE - N42°-30' W 5.4'
N38°W 142.9 - $\frac{60 \cdot 90}{994} = 142.9$

10 Δ 51°-17' R
West, 172.9 6°-45' = 171.7

9 Δ 0°-19' L
N89½° W 269.5 N89°-46' W

8 Δ 70°-34' L
N19° W 134.2 N18°-53' W

7 Δ 44°-21' R
N61°-30' W { 103.0 F N63°-44' W
169.5 80 = 990 = 167.8

7 Δ 1°-59' L { 300.0 F
103
167.8
300
570.8

N62° W { 178 F N66°-15' W
300 F

6 Δ 25°-35' R 517.0

N86° W { 173.0 F N86°-50' W
300.50 = 946 298.8
300 - 72 = 228
941 = 297.3
173
298.8
297.3
769.1

at E 4th
+ 2nd St

Δ 70°-51' R

S21½° W { 862 F
300.0 10° = 985 = 295.5
376.7

4 Δ 29°-18' L

S49¾° W, 162.3 8°-30' = 160.5 S57°-37' W
Δ 0°-09' L 189

2 Δ 10°-29' R
S51½° W 151.4 F S57°-46' W

S38½° W 105.6 F S41°-17' W

① Δ 0°-40' L

Pt 5½ N S41¾° W 1286 · 10° = 126.7 N41°-57' W
of SW Rn

CS FILE FOLDER

CONTAINS

MORE

INFORMATION