

COUNTY SURVEYOR'S OFFICE, ROSEBURG ORE
 BRIDGE LUMBER CO.; REEDSPORT.
 TRUCK LOGGING ROAD R/W APPLICATION
 THRU $N^2 NE^4 SE^4 SEC. 31, T.22S; R.8W. W.M.$
 Aug. 1942 Boyer, Dep. Co. Surveyor Scale, 1" = 200'

CS 36/44-2

S 1/4 Sec 17
N 1/4 Sec 17
S 1/4 Sec 17
S 1/4 Sec 17
S 1/4 Sec 17
S 1/4 Sec 17
S 1/4 Sec 17
S 1/4 Sec 17

N 1/4 Sec 17

N 0° 51' W 2580.9

N 1/4 Sec 17

Random 2639
N 0° 13' W

Center 17

N 10° 45' E

523.7 N

2695.1
5896.5
5336.15
2634.1

2666.41

2666.41

Random Line
S 0° 08' W 1521.1

Center 17

S 1/4 Sec 17

2671.4

5896.45

36-44

2599.1
2671.4
5270.5
5853.7
5336.3
47.9

Bridge L Co

Fri Aug 21

Boyer
Grand Survey

on trail

N66°W 59.0

N68°W 48.0

S73°W 40.5

S47°W 84

creek } North 42.5

SW } N10°W 53.0

Bank } N46°W 68.0

N58°W 52.0

N70°W 40.5

N68°W 45.0

N60°W 71.5

N66°W 60

N87°W 48

S67°W 32

N77°W 40

N55°W 19.0

N77°W 35.0

N77°W 35.0

N85°W 54.0

S80°W - 65.0

N40°W 64.0

N70°W 48

N82°W 68

N64°W 21.0

N65°W 27.5

N78°W 49.0

N20°W 52.0

N66°W - 85.5

N20°W 55

N54 81.0

N70°W 52.5

N. 44.0

N5°W 46.0

N27°W 37.0

N20°W 69.5

N20°W 47.0

N48°W 37.0

N44°W 45.0

N55°W 58.5

creek 712
75 below

116.5

cen Little Camp

0 + 0

450 S of Sec cor 50708 36-44

355 W 103 West

50% throughout

$2\frac{1}{2}^{\circ}$ per 1000
 $895) 120,000 (134.0$
 $\underline{895}$
 3050
 $\underline{2685}$
 3650
 $\underline{3580}$
 700

$1000 \dots$
 $25 \dots$
 60
 $\underline{5246}$
 754 CHS
 $\underline{66}$
 4524
 $\underline{4524}$
 497.64

257
 295
 30
582

$W 3 \frac{1}{2}^{\circ} 22^{\circ}$

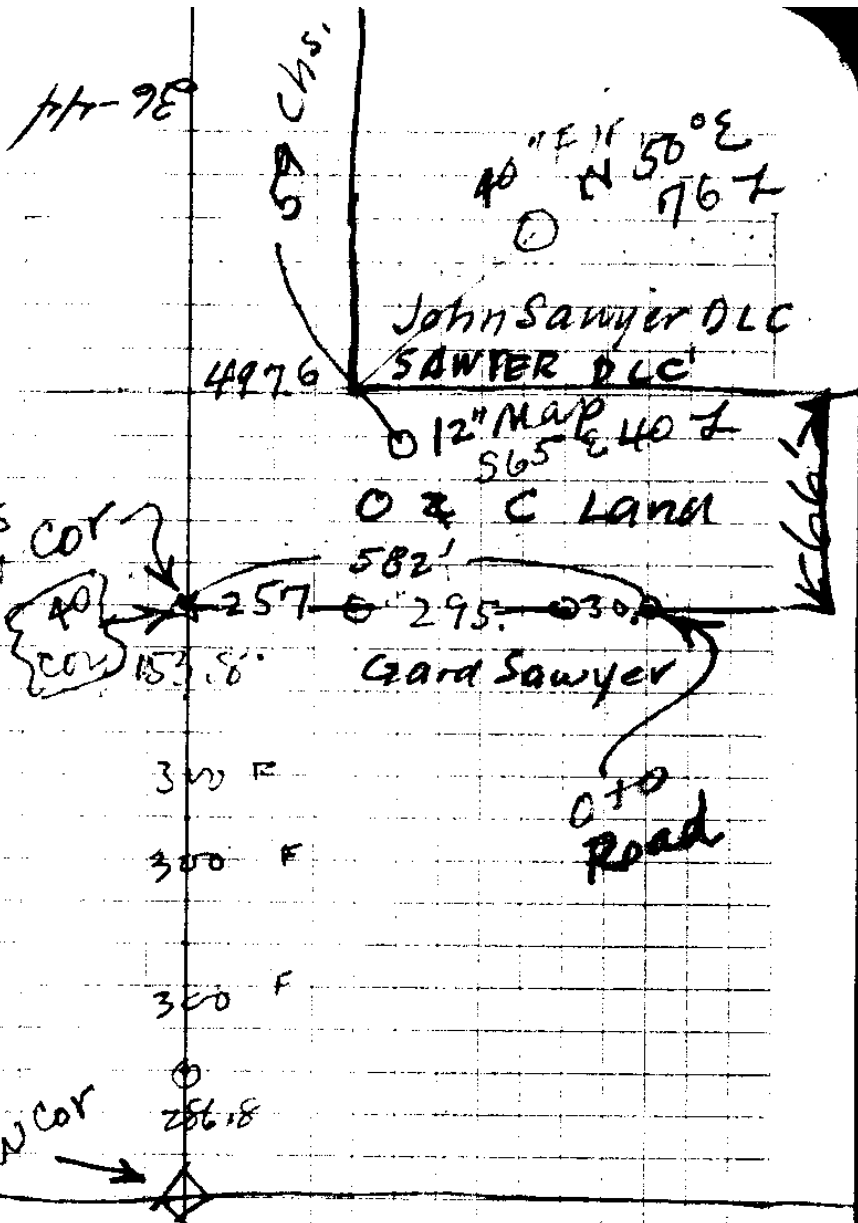
T22S/R8W

N66°E 100'
 Pt - A 180°
 N66°E 100.0'
 Pt & RD
 N50°E 177.0
 Gards
 IV. Line = Oto Road
 N47°E 83.0'
 40 Line
 582' E of
 40 line
 36-44

$$\begin{array}{r} 557 \\ \underline{\quad 3} \\ 257.1 \\ 295 \\ \underline{\quad 30} \\ 582 \end{array}$$

$$\begin{array}{r} 66 \\ 75 \\ \underline{\quad 3} \\ 495.0 \end{array}$$

$$\begin{array}{r} 552 \\ 100 \\ \underline{\quad 5} \\ 87 \end{array}$$



GAARD'S NW COR
 40
 153.8'

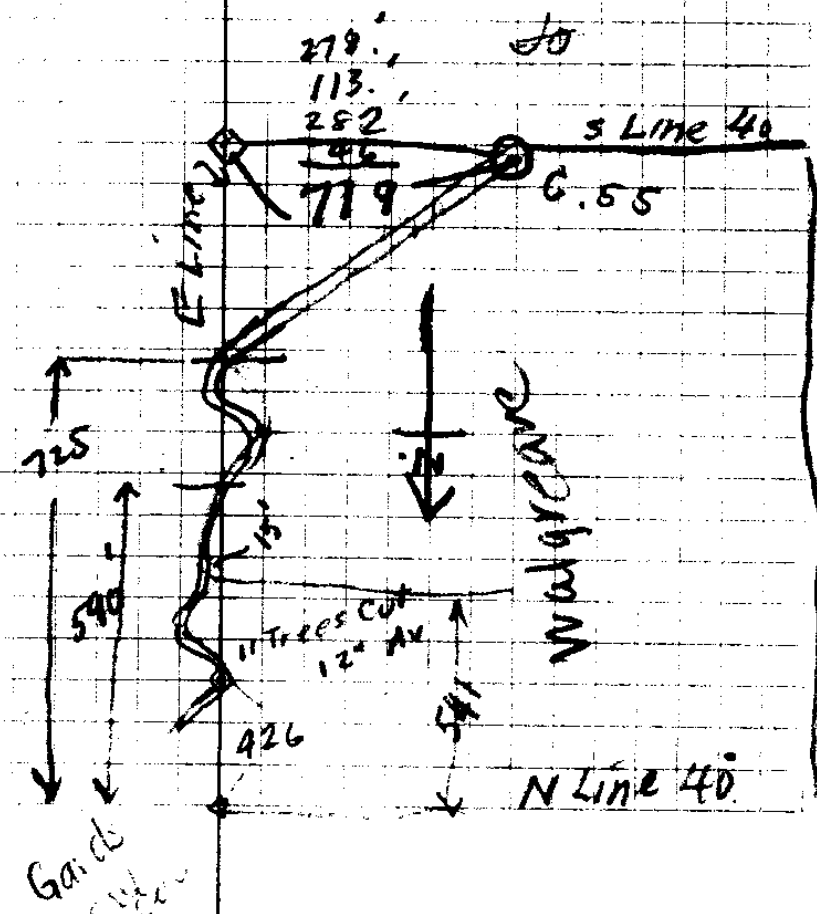
12" MAP
 565
 407
 0 & C LAND
 582'
 295
 0300
 GAARD SAWYER

Old Road

GAARD'S S.W. COR

300 F
 300 F
 300 F

286.8



279.
 113.
 282
 46
 719

S Line 40
 G.55

725

590

426

WADSWORTH

N Line 40

GAARD'S SW COR

S 78° W 35' } 55.0
S 78° W 20" }

x W edge Cr
S 25° W 38' 10' Fill

K Edge Crepe
55° E 50

x out
S 44° W 92'

N 65° W 40'

S 42° W 60'

x out
N 49° W 30'

N 43° W 58'

N 53° W 45'

N 58° W 37'

W 76.0

S 79° W 35'

S 76° W 32' 167

S 70° W 35'

S 84° W 23'

S 80° W 52'

S 88° W 55'

S 76° W 77.0

N 89° W 44'

N 77° W 46.0

S 48° W 38.0

S 70° W 63.0

S 46° W 97 = S 25° W 100' by cedar

S 33° W 71.0

S 25° W 17.0

S 77° W - 24.5

S 72° W 49.0

S 88° W 58.0

S 71° W 75.5

Cr = (0 + 0) 535' S
103' W cov

Cr
Creek
410'

x out
S 79° W 54'

S 85° W 25'

S 82° W 90'

S 74° W 74.0

S 72° W 69.0

S 87° W 50'

S 71° W 91.0

S 83° W 112'

S 87° W 62'

S 65° W 37'

S 70° W 38'

S 44° W 39'

S 41° W 72'

S 37° W 35'

S 40° W 52'

S 60° W 77'

S 74° W 68.0

N 75° W 66.0

x out
N 52° W 71.0

S 73° W 80'

S 30° W 53.0

S 58° W 72.5

S 2° W 49'

S 34° W 64'

S 41° W 40'

S 41° W 55.0

S 85° W 56'

N 59° W 58'

S 55° W 62'

S 86° W 38.0

S 61° W 44.5

S 74° W 51'

S 42° E 81'

S 80° W 72'

S 85° W 43'

S 20° W 84'

S 77° W 62'

S 88° W 63'

S 64° W 69.0

S 7° W 60.0

S 32° E 102'

S 46° W 53'

S 42° W 43.5

S 56° W 88'

N 80° W 45'

S 43° W 100'

S 62° W 37'

S 50° W 58.5

S 66° W 39.8'

S 76° W 73.0

S 75° W 100'

N 55° W 58'

N 40° W 54'

S 57° W 100'

S 60° W 94'

S 51° W 62'

S 46° E 38'

S 42° E 55'

S 43° E 63.5'

S 45° E 87'

S 51° W 62'

S 51° W 35'

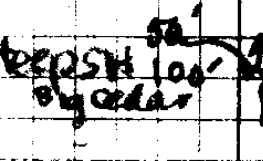
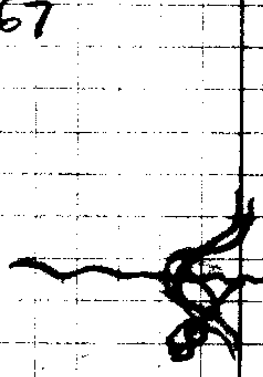
x out

x out

x out

x out

x out



36-44

N 53W 83.5
S 30° W 100'

sun

S 75W 55.0

S 30° W 100'

S 20E 72

S 30W 74

S 50° W 53.0 }
S 50W 100 }

S 12 E 47.0

S 10th 55.0

S 48W 61.0

N 85 W 47.0

N 50W 60.0

S 72W 70.0

S 85W 63.0 }
S 85W 54.0 }

N 63W 56.0

N 75W 74.0

S 53W 115.0

S 42 W 106.0

S 55 W 63.0

S 65 W 65.0

S 41W 95.0

S 45W 146.0

S 55W 56.0

S 32W 100.0

S 25W 50.0

S 30° W 55.0 }
S 30° W 48.0 }

S 75W 40.0

S 5° E 180.0

A

89.5
90.9
95.8
99.1
43.
46.2
90.4
554.0

93.0 Flat = Hemlock in SW Quad
Inset 13

99.0 Flat } 35' w to

100, 50 90 = 26.2° = 89.5
100, 42 90 = 24.4° = 90.8
100, 50 90 = 26.2° = 89.5

W 100 - 42 90 = 24.42 - 90.4 = 90.8'

TIE TO CCR

S 30 W 37.0 - (14' N = Sec Line)?

S 33 W 77.0

S 10 W 52.0

S 15 W 47.5

S 34 W 46.0

S 52 W 44.0

S 61 W 42.5

W 51.0

N 85 W 38.0

S 55 W 36.5

S 30 W 34

S 15 W 70.5

S 15 W 45.0

S 35 W 62.0

S 42 W 58.5

S 46 W 75

S 41 W 100

N 77 W 37

N 55 W 50

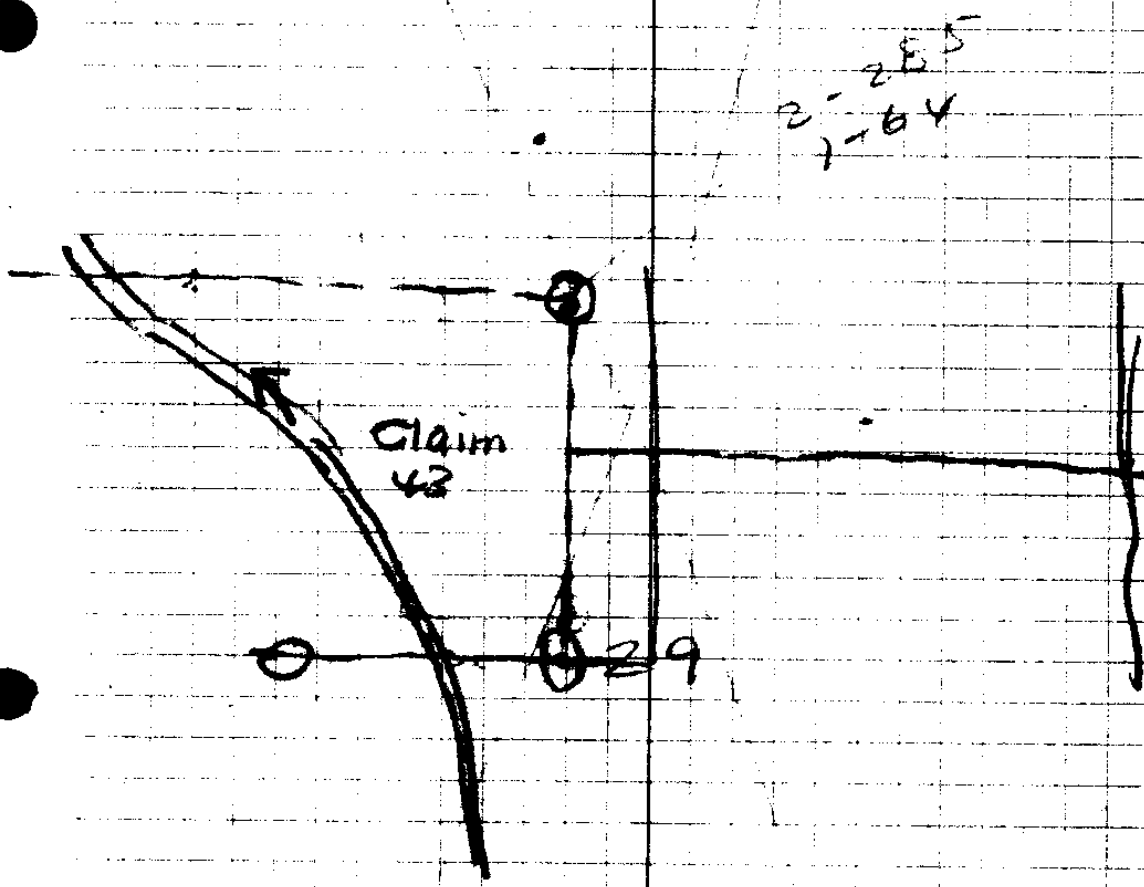
NE Cor 43 - Buggy hub

10" Oak S 56-30W 44.3 ft

12" Forked wh. oak N 53W 35 ft

16" # " N 36°E 132' ? 132.

NE Cor 43 -



NE Cor 29+30 - 2" I.P.

10" W.O. S 71W 35.9'

10" Fir N 83°E 24.7'

36-44

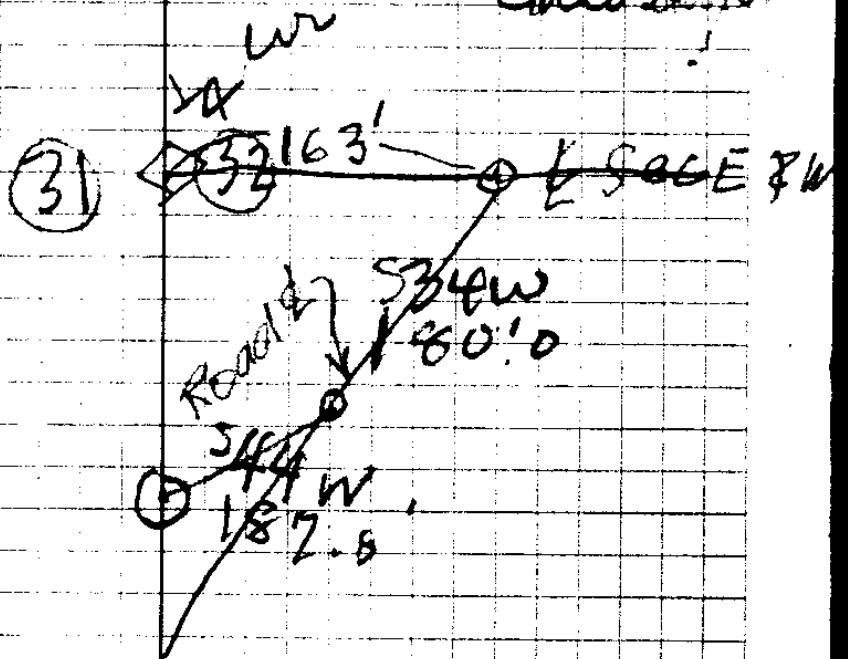
57.9 mi

Bridge L Co

Jan 2. 43

1003

Grand Survey



SAGE SW

21

S 20 1/2° W 80.3

20

S 44° 40' W 69.3

19

S 6° E 69.0

18

S 10° 20' W 58.5

17

S 4° 50' W 58.7

16

S 4° 05' E 72.0

15

S 14° 50' W 123.6
123.6

14

S 4° 20' E 30.0

13

S 60° 30' S 43.7

12

S 60° 10' S 61.2

11

S 86 1/2° E 67.0

10

S 88° E 53.7

9

S 88° E Tot = 200.7
149

Break

S 4° 50' W
130.7

S 60° 20' E
104.9

See Line bet 31/32

S 45° 10' W 66.5

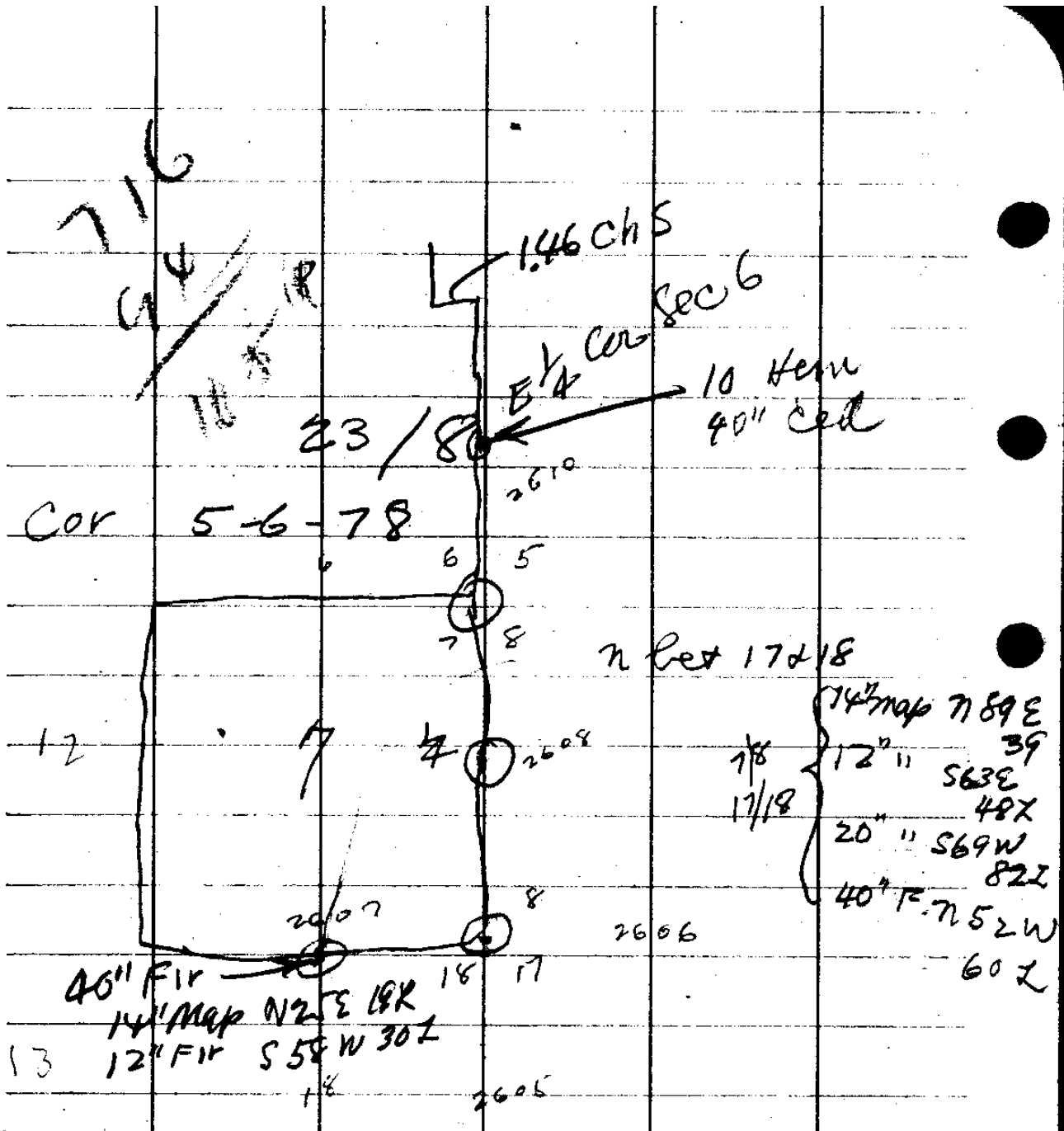
23 End

S 20 3/4° W 67.5

22

S 42 1/4° W 148.0

21



N bet 5+6 - 14.6 = trail

- 19.2 = v
- 20. Top mtn
- 29 - Stream
- 36.4 = "

40 1/2 cor { 10" Hem S 64 W 25 Z
 40" Cor N 42 E 18 Z

- N bet 7+8
- 2.0 = Top Spur
- 8.0 Top Ridge
- 9.14 Hemlock 14"
- 17.6 Stream
- 24

abt 100' above Stream
 FH N 72 E 63 Z
 S 54 W 28 Z

- 45.4 - 5" Fir Marked
- 48.2 = Top
- 72.7 = Little Camp Cr
- 80 = Cur 50" Fir N 1° E 22 Z = 14.5
- 5.8 { 4" Fir S 43 E 81 Z =
- 7.8 { 24" Fir S 31 W 30 Z = 19.8
- 24.2 " N 79 W 48 Z = 31.6

CS FILE FOLDER

CONTAINS

MORE

INFORMATION