

COUNTY SURVEYOR'S OFFICE ROSEBURG ORE.
 BRIDGE LUMBER CO: REEDSPORT, ORE.
 TRUCK LOGGING ROAD^{R/W} APPLICATION
 THRU SEC 7, T23S; R 8 W. W. M.
 AUG 1942 A. Boyer Dep. Co. Sur. Scale: 1"=800'

CS 36/44-1

FILE 04-1 DRAWER 36

S 1/4 Sec 17
N 1/4 Sec 17
S 1/4 Sec 17
S 1/4 Sec 17
S 1/4 Sec 17
S 1/4 Sec 17
S 1/4 Sec 17
S 1/4 Sec 17

W 1/4 Sec 17

N 0° 51' W 2580.9

N 1/4 Sec 17

Random 2639
N 0° 13' W

Center 17

N 10° 45' E

523.7 N

2695.1
5896.5
5336.15
2634.1

2666.41

2666.41

Random Line
S 0° 08' W 1521.1

E 1/4 Sec 17

S 1/4 Sec 17

2671.4

36-44

2599.1
2671.4
5270.5
5853.7
5336.3
47.9

Bridge L Co

Fri Aug 21

Boyer
Grand Survey

on trail
N66°W 59.0
N68°W 48.0
S73°W 40.5
S47°W 84

creek } North 42.5
SW } N10°W 53.0
Bank } N46°W 68.0
N58°W 52.0

50% through

N70°W 40.5 }
N68°W 45.0 } N66°W - 85.5
N60°W 71.5
N66°W 60
N87°W 48
S61°W 32
N77°W 40
N55°W 19.0
N77°W 35.0
N77°W 35.0
N85°W 54.0
S80°W - 65.0
N40°W 64.0
N70°W 48
N82°W 68
N64°W 21.0
N65°W 77.5
N78°W 49.0
N20°W 52.0

N20°W 55
N54 81.0
N70°W 52.5
N. 44.0
N5°W 46.0
N27°W 37.0
N20°W 69.5
N20°W 47.0
N48°W 37.0
N44°W 45.0
N55°W 58.5

creek 712
75 below

116.5

cen Little Camp

0 + 0

455 S of Sec cor 5.708 36-44
355 W of 103 West

$2\frac{1}{2}^{\circ}$ per 1000
 $895) 120,000 (134.0$
 $\underline{895}$
 3050
 $\underline{2685}$
 3650
 $\underline{3580}$
 700

$1000 \dots$
 $25 \dots$
 60
 $\underline{5246}$
 754 CHS
 66
 $\underline{4524}$
 4524
 $\underline{497.64}$

257
 295
 30
582

$W 3 \frac{1}{2}^{\circ} 22^{\circ}$

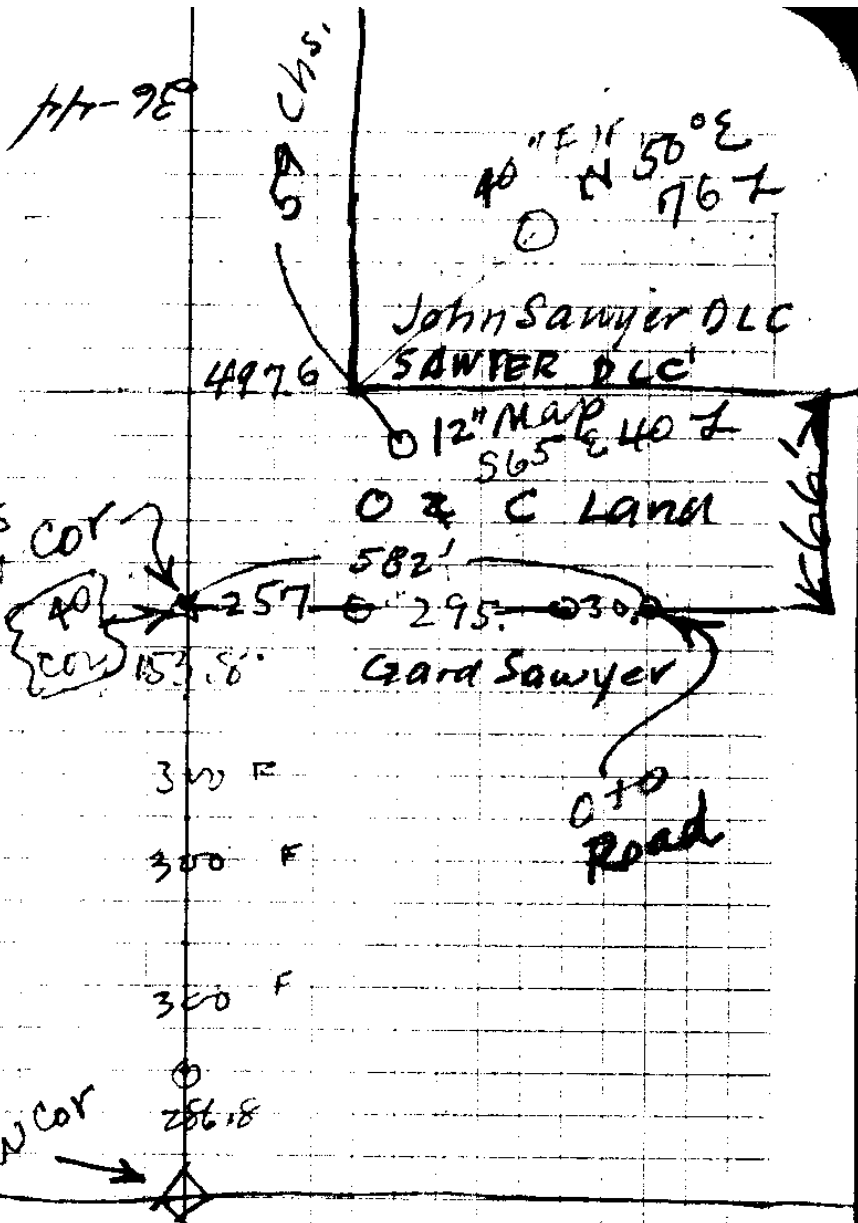
T22S/R8W

Pt - A 180°
 $N66^{\circ}E$ 100'
 Pt & RD
 $N66^{\circ}E$ 100.0'
 Gards
 IV. Line = Oto Road
 $N50^{\circ}E$ 177.0
 $N47^{\circ}E$ 83.0'
 40 Line
 582' E of
 40 line
 36-44

$$\begin{array}{r} 557 \\ \underline{\quad 3} \\ 257.1 \\ 295 \\ \underline{\quad 30} \\ 582 \end{array}$$

$$\begin{array}{r} 66 \\ 75 \\ \underline{\quad 3} \\ 495.0 \end{array}$$

$$\begin{array}{r} 552 \\ 100 \\ \underline{\quad 5} \\ 87 \end{array}$$



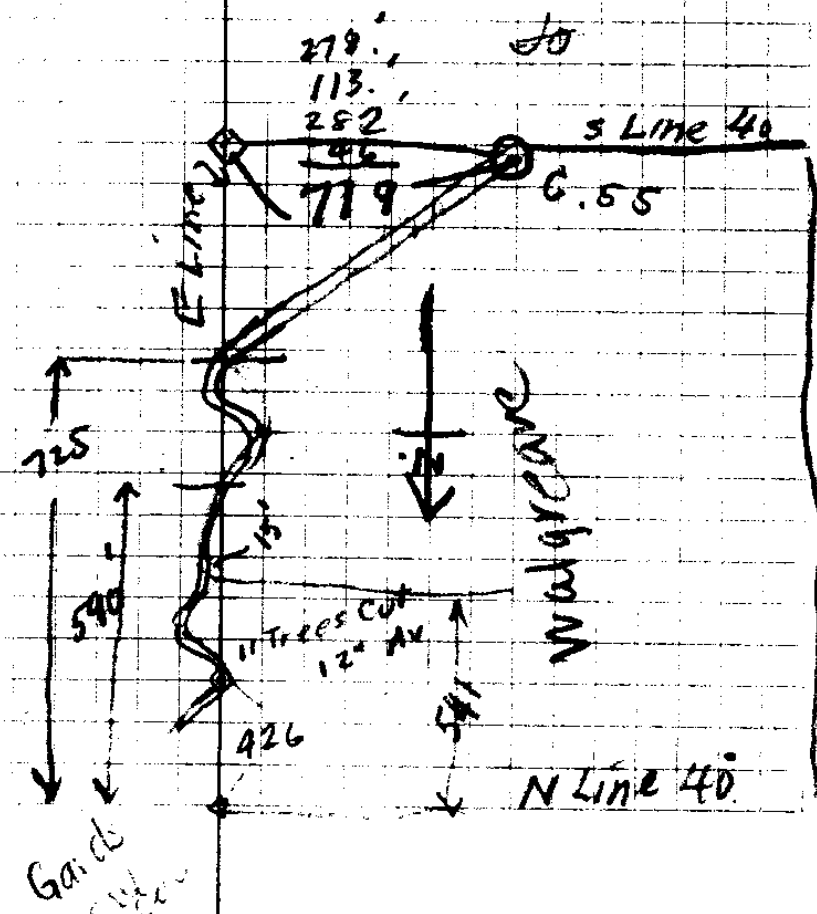
GAARD S.W. COR →

GAARD NW COR →

Old Road

300 F
 300 F
 300 F

286.8



GAARD S.W. COR

Wagonway

N Line 40

279.
 113.
 282
 46
 719

725

590

426

541

11 TREES CUT
 12\"/>

N 53W 83.5
S 30° W 100'

sun

S 75W 55.0

S 30° W 100'

S 20E 72

S 30W 74

S 50° W 53.0 }

S 50W 100 }

S 12 E 47.0

South 55.0

S 48W 61.0

N 85 W 47.0

N 50W 60.0

S 72W 70.0

S 85W 63.0 }

S 85W 54.0 }

N 63W 56.0

N 75W 74.0

S 53W 115.0

S 42W 106.0

S 55 W 63.0

S 65 W 65.0

S 41W 95.0

S 45W 146.0

S 55W 56.0

S 32W 100.0

S 25W 50.0

S 30° W 55.0 }

S 30W 48.0 }

S 75W 40.0

S 5° E 180.0

A

89.5
90.9
95.8
99.8
43.
46.2
90.4
554.0

93.0 Flat = Hemlock in SW Quad

99.0 Flat } 35' w to

100, 50 70 = 16.4 = 9.58

100, 42 75 = 24.4 = 9.09 } Mouth Creek (Little)

100, 50 70 = 26.2 = 89.5

W 100 - 42 75 = 24.4 = 9.09 = 9.08'

TIE TO CCR

S 30 W 37.0 - (14' N = Sec Line)?

S 33W 77.0

S 10W 52.0

S 15W 47.5

S 34 W 46.0

S 52W 44.0

S 61W 42.5

W 51.0

N 75 W 38.0

S 55 W 36.5

S 30W 34

S 15W 70.5

S 15W 45.0

S 35W 62.0

S 42W 58.5

S 46 W 75

S 41 W 100

N 77W 37

N 55 W 50

NE Cor 43 - Buggy hub

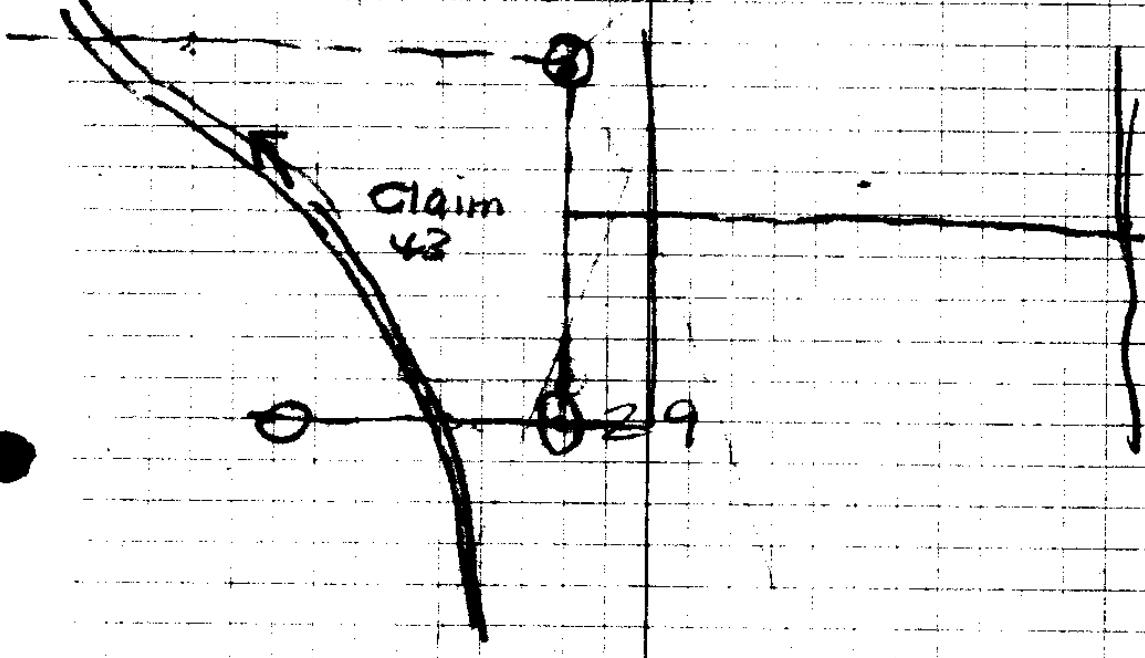
10" Oak S 56-30W 44.3 ft

12" Forked wh. oak N 53W 35 ft

16" # " N 36°E 132' ? 132.

NE Cor 43 -

2-285
1-64



NE Cor 29 + 30 - 2" I.P.

10" W.O. S 71W 35.9'

10" Fir N 83°E 24.7'

36-44

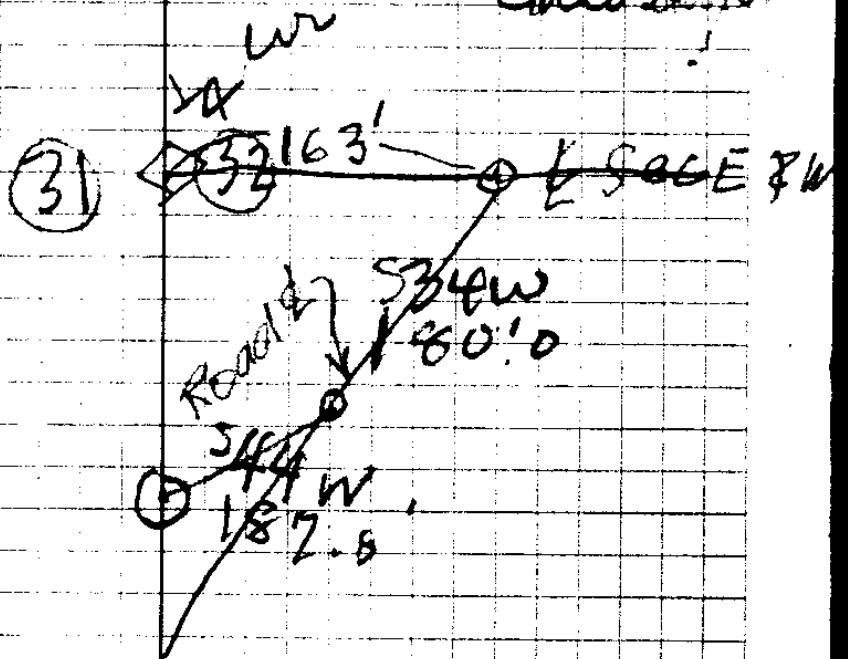
57.9 mi

Bridge L Co

Jan 2. 43

1003

Grand Survey



SEC 2. 111P

21

S 20 1/2° W 80.3

20

S 44° 40' W 69.3

19

S 6° E 69.0

18

S 10° 20' W 58.5

17

S 4° 50' W 58.7

16

S 4° 05' E 72.0

15

S 14° 50' W 123.6
123.6

14

S 4° 20' E 30.0

13

S 60° 30' S 43.7

12

S 60° 10' S 61.2

11

S 86 1/2° E 67.0

10

S 88° E 53.7

9

S 88° E Tot = 200.7

Break

S 4° 50' W
130.7

S 60° 20' E
104.9

See Line bet 31/32

S 45° 10' W 66.5

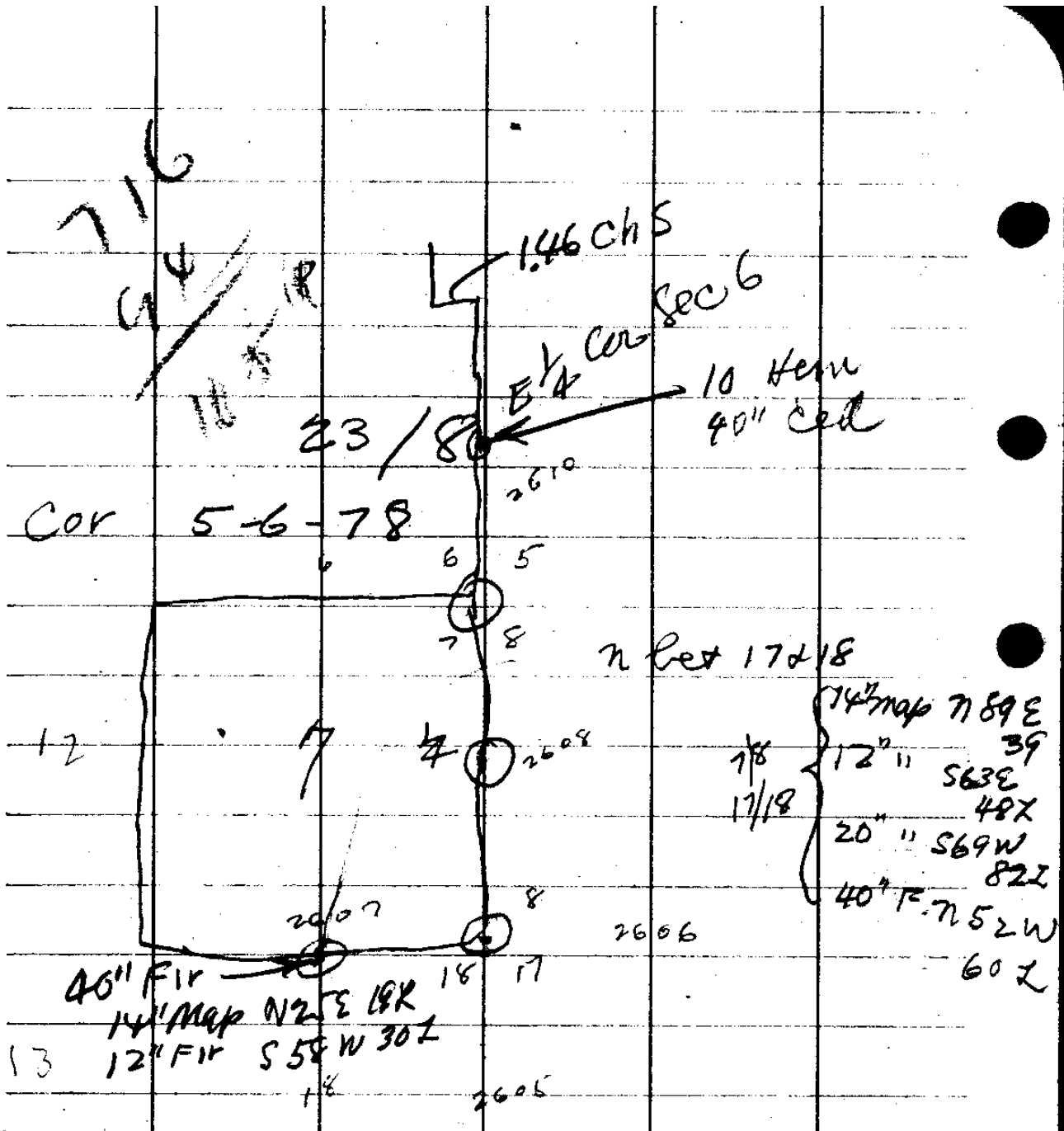
23 End

S 20 3/4° W 67.5

22

S 42 1/4° W 148.0

21



N bet 5 & 6 - 14.6 = trail

- 19.2 = v
- 20. Top mtn
- 29 - Stream
- 36.4 = "

40 1/2 cel { 10" Hem S 64 W 25 L
 40" cel N 42 E 18 L

- N bet 7 & 8
- 2.0 = Top Spur
- 8.0 Top Ridge
- 9.14 Hemlock 14"
- 17.6 Stream
- 24

abt 100' above Stream
 FH N 72 E 63 L
 S 54 W 28 L

- 45.4 - 5" Fir Marked
- 48.2 = TAP
- 72.7 = Little Camp Cr
- 80 = cur 50" Fir N 1° E 22 L = 14.5
- 5.8 { 4" Fir S 43 E 28 L =
- 7.8 { 24" Fir S 31 W 30 L = 19.8
- 24.2 " N 79 W 48 L = 31.6

26.0
 26.1
 26.2
 26.3
 26.4
 26.5
 26.6
 26.7
 26.8
 26.9
 27.0

CS FILE FOLDER

CONTAINS

MORE

INFORMATION