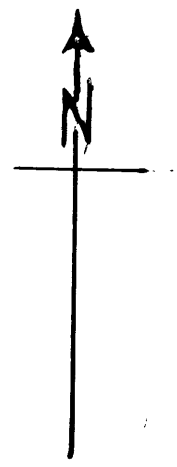
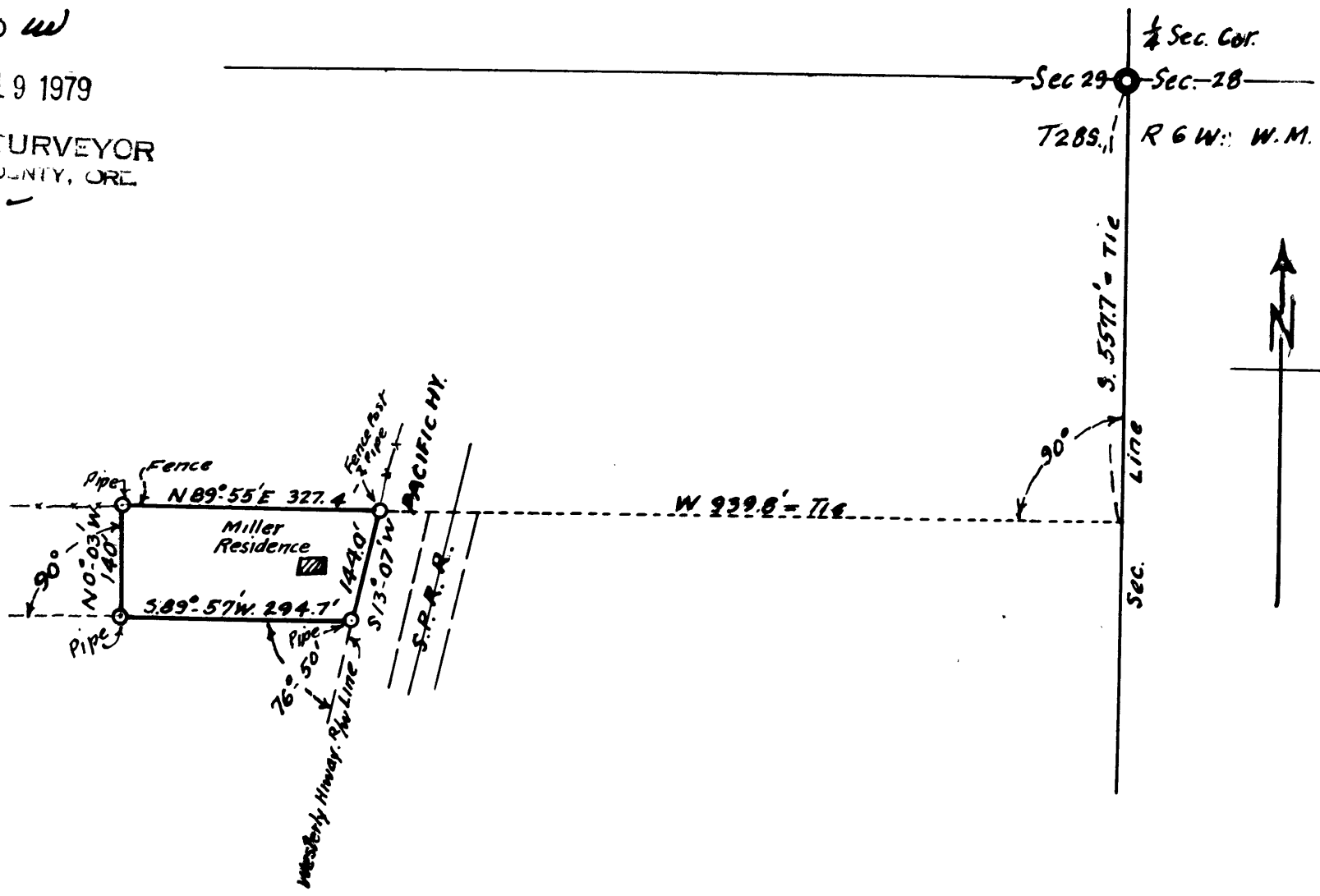


FILED

RECEIVED *w*

MAR 19 1979

CLATSOP COUNTY SURVEYOR  
CLATSOP COUNTY, ORE.



Wm & Ruth Miller Blair to  
Cornelius Fosback.  
June 25, 1942      Scale 1" = 200'  
A. Boyer.

S 2.39' W - 316  
315.6 S - 14.5 W

128.1  
902  
2562  
11529  
1155962

944  
316  
5994  
999  
2997  
315684

127.7  
996  
7662  
11493  
11493  
12718.92

908  
612  
1996  
998  
5988  
601076

115.5  
959  
10705  
5765  
10325  
1102045

316  
086  
1596  
1264  
14536

127.7  
084  
5108  
10216  
107268

612  
209  
5508  
12240  
107908

115.5  
284  
4625  
9240  
2310  
328020

2-26  
2  
452

65  
242  
130  
264  
2790

127.7  
2158

Total

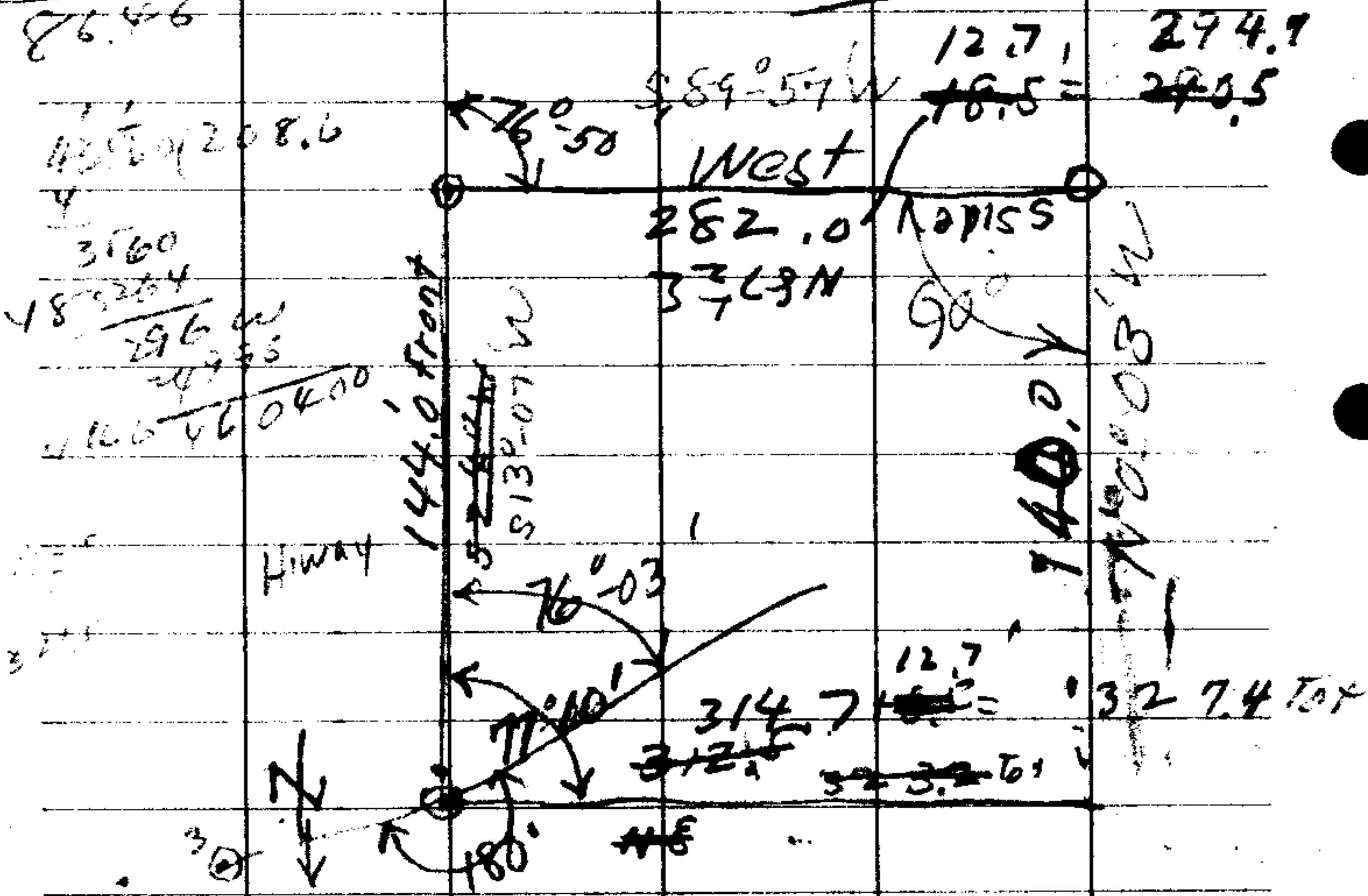
193.0  
79.  
69.4  
88.  
93.  
92.6  
202.0  
130.2  
135.2  
127.7  
1210.1  
131.7

4  
7  
1  
7  
3  
8  
4  
6  
2  
8

1320  
1210  
110  
77  
43

1320  
1395  
1210  
185  
61  
124  
1320  
75  
1395  
1079  
316.

	66	144	43570.0	302.5
111	3.50		432	
66	33.00		360	
786	198		288	
786	221.00		720	
8646			720	



Hub on 0.5 offset S of NE cu = B.S. on 2 Δ = 76°03' to SE cu

NE cu Prop. = 4

S89°45'W 255.7 (50) = 254.6 = S89°17'W

3 Δ 16°42' R (Note Δ = 16°35' R to Hub on) S89°10'W 0.5 offset - W 255.7 (50) = 254.6

25 S S73°W 204. (3-45) + 300.0 F = 97.5 F = 601.0

2 Δ 50°30' R

S22°W 300. 5 1/2 995 = 298.5

1 Δ 22°05' R

S 98.3 F

4 cu

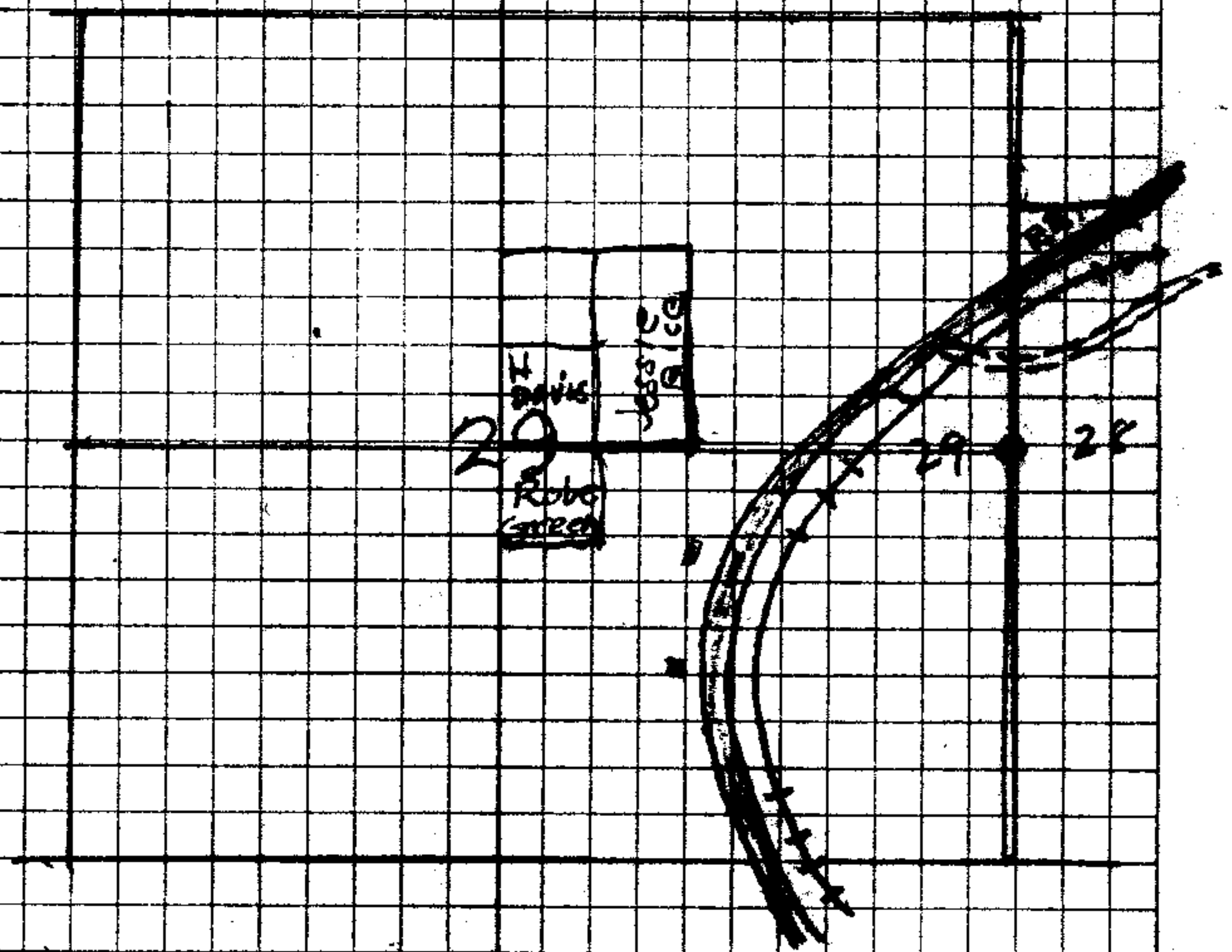
Bayn-wm Blair - Cornelius Foback

June 25 / 1942

1409 1/4 Cor bet 28 & 29 28/6 36-35  
 W.O. brs S. 65° E. 131. = 86.5 prob Lks.  
 B.O. S. 67° W. 3.50 \*

3125  
 3025  
 10

1408 28-29-32-33  
 8" B.O. S. 42° W. 71'  
 15" S. 59° E. 81'



36/35

$$\begin{array}{r}
 314.7 \\
 282 \\
 \hline
 2) \underline{596.7} \\
 248.3 \\
 \hline
 142 \\
 \hline
 596.6 \quad 47 \text{ (1)} \\
 1193.2 \\
 2483 \\
 \hline
 42358.6
 \end{array}$$

$$\begin{array}{r}
 144 \\
 140 \\
 \hline
 2 \overline{) 284} \\
 142 \\
 \hline
 142
 \end{array}$$

$$\begin{array}{r}
 43560 \\
 42358.6 \\
 \hline
 140 \overline{) 1201.4} \quad (8.5 \\
 1120 \\
 \hline
 800 \\
 700 \\
 \hline
 100
 \end{array}$$

CS FILE FOLDER

CONTAINS

MORE

INFORMATION