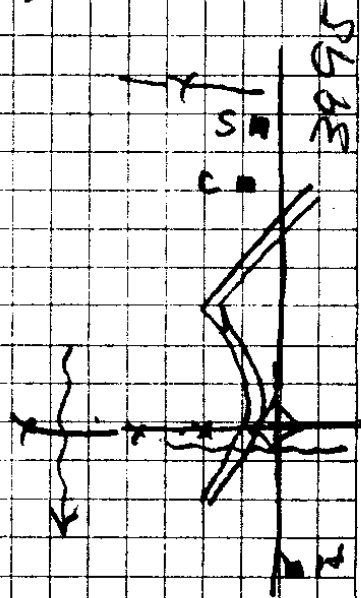


Sec Cor 29, 30, 31, 32	N 78° E	24 1/2
40' Black O. Stump	S 30 E	63 "
45" " "	S 7° W	120 "
40" " "	N 76 W	29 "

NEW TREES

30" W.O	N 6° E	42 Z
46" B.O	S 30 E	63 Z
35" Pine	S 46 W	93 Z
45" B.O	N 19° W	17 Z



N 0° - 43' E bet 29 & 30

10 chs = Rd

12.5 = Church Its brs W 80 1/2 Ks

15.55 School " " W 68 1/2 Ks

16.90 = Car Fence

18.50 = House = West 80 1/2 Ks

24.00 " " " 120 "

29. Bdl Fence

34.14 Wire

39.95 Ch = 1" Pipe

30" W.O S 61° E 78 Z

W.O Stump S 42 1/2 W 119 Z

NEW TREES
 12" W.O. N 18 1/2 E 88
 16" B.O. W. 73 Z

318
636

318
159
4.77

318 chs 3
W 1.59 chs x 3,18 chs

318
7.95

S Fence 18 Lks to E or N

Ed Hansen 95/110

{ SW Cor. Parimage Prop- 20 Lks S of
SW fence cor

Set 3/4" Axle 36" lg at Eds- SW Cor

" 1" Steel Bar at NW cor

" 3/4" G.I.P. NE cor

{ Ruck 3' N
3' W

Ed Hansen
Tract
95/110

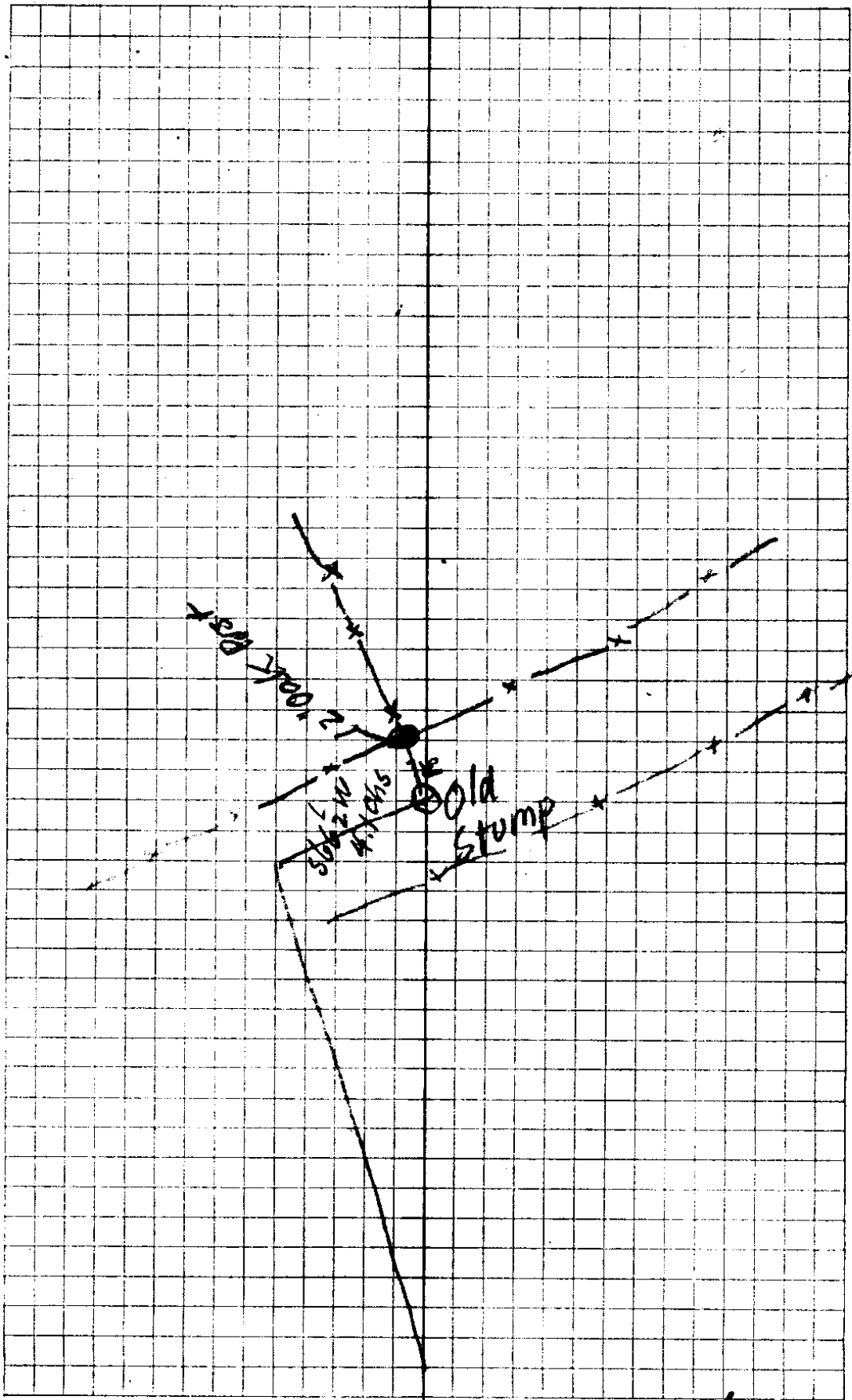
Set 1" Steel (Bar Hollow) NE cor

Church Prop - on Section

from wh. SW cor ^{New} School Conc Wall is 23.9 Links

any 25' SW cor Conc Basement is 51.2 Links

51.2



Note at 40 = 66 lks E

32.59 $\Delta 90^\circ R$

28 + 75 = 55 lks E

E 138 lks

28 + 75 = 28.75 $\Delta 90^\circ R$

26 Move 76 lks W $90^\circ - 00'$

N 26

OAD = SE Cor Church Property