

Road ~~being~~ over - ~~at~~
for Airport use
JUST N. OF Roseburg

July 1942

MB,

36/4

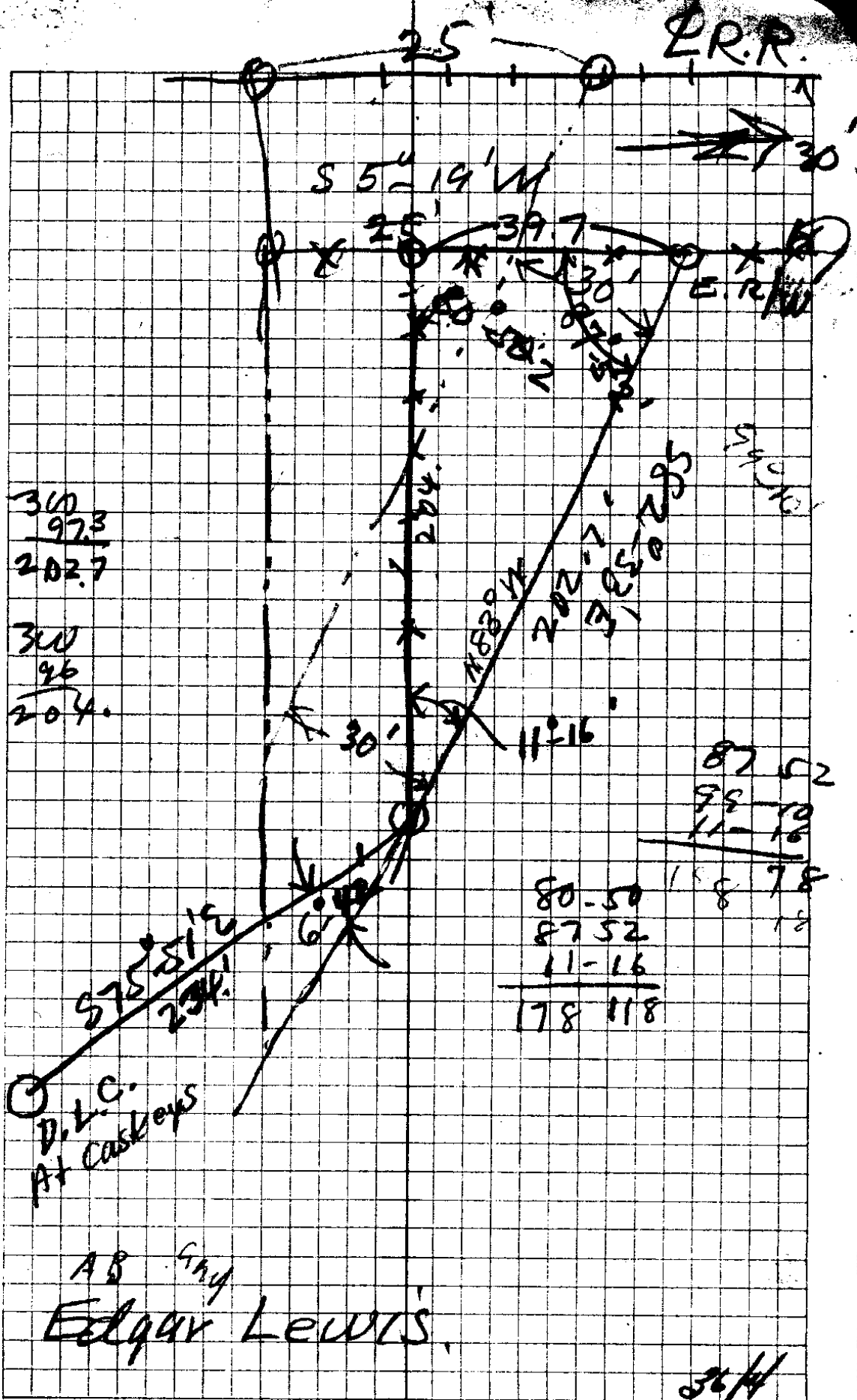
Line E of RR

Wed
July 2
1941

Sta	+S	H/I	+S	Elev	
0+0	575	578.6		512.8	Top Rail
0+12			8.3	510.3	
+22			12.0	506.6	
+30			14.6	507.0	Fence
+34			13.5	505.1	Ditch 12" wide
+49			12.0	506.6	
+92			9.9	508.7	
1+26			8.6	510.0	
+58			7.1	511.5	Edge (N) RA Bed
2+00			5.9	512.7	
200 E of RR (old)					
2+36			4.8	513.8	opp End of track

Line W of RR

0-5.0			6.3	512.3	
0-10			7.8	510.8	
0-14.5			9.5	507.1	
230			8.0	510.6	
0-80			7.2	511.4	
0-100			7.0	511.6	



AB GRAY
 EDGAR LEWIS

36/4

Sheet

6

7

18

17

19

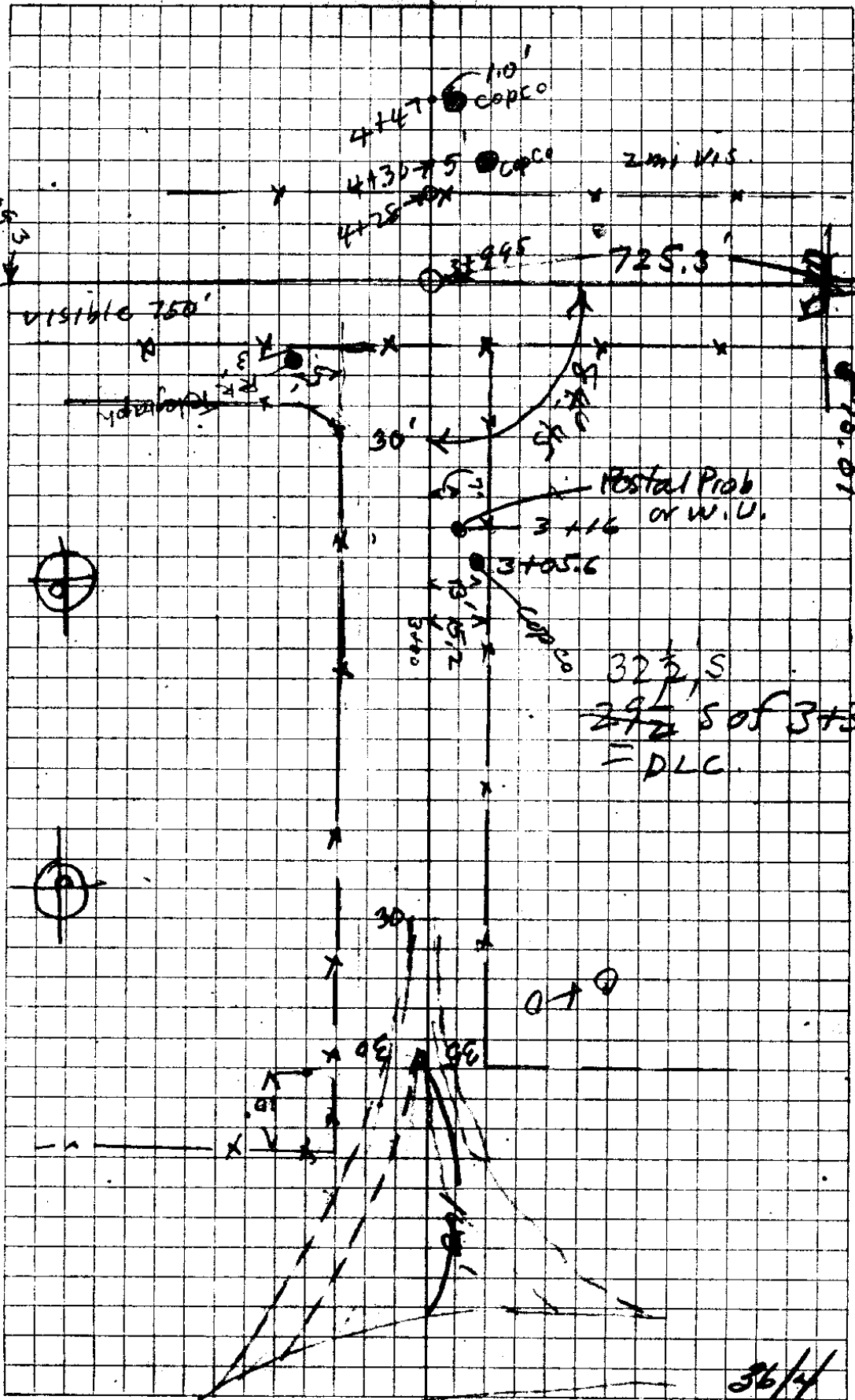
20

30

29

31

PS
from
Xing



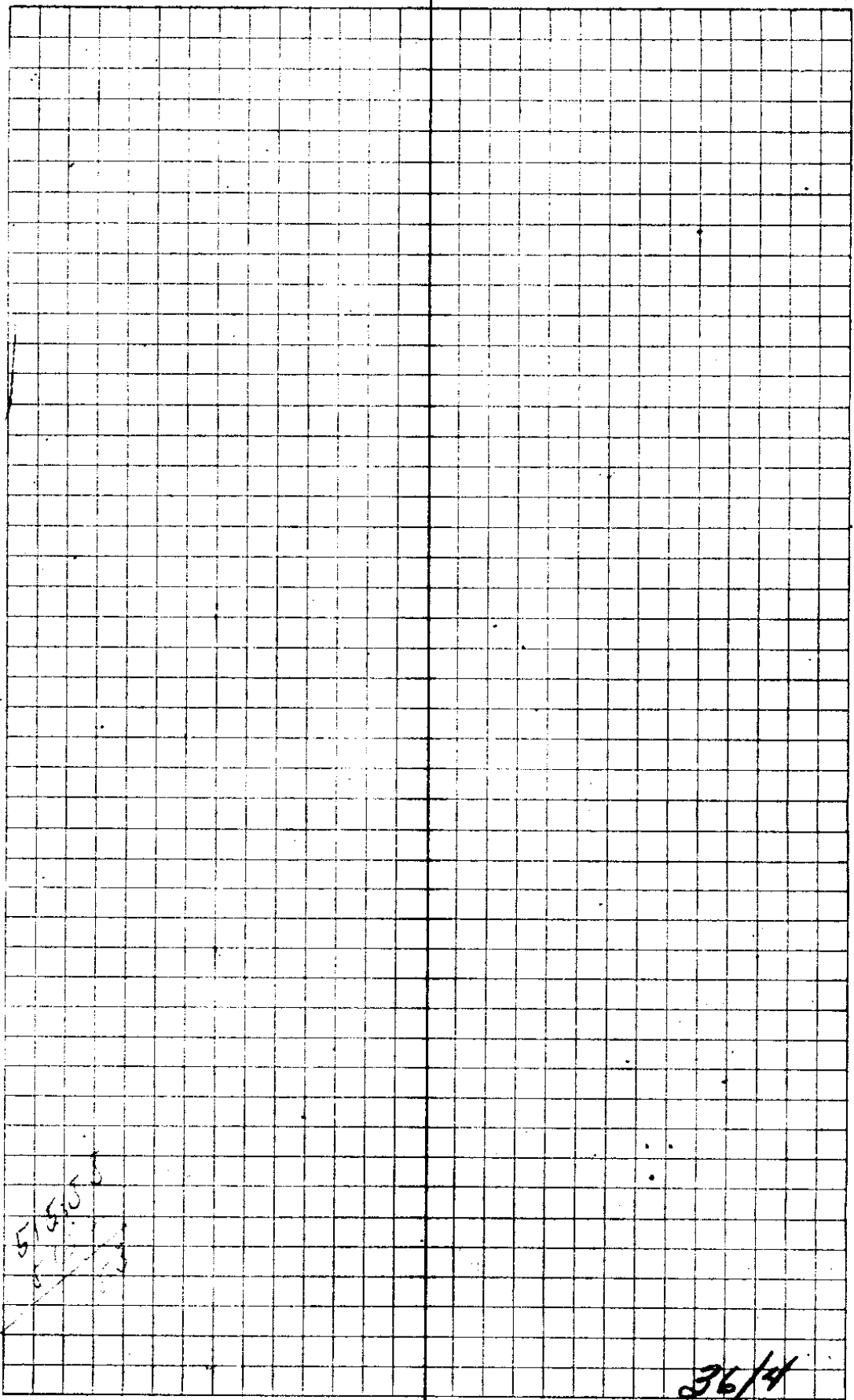
For Prof. New King S.P. RR to Airport

Sat May 3
1941
AR
NER.

Conc. Culu. BM.	ts	H1	-S	Elev	Just N of old Edenb. 20. Site 0.10 477.79
	16.32	480.71		470.39	
⊙			1.02	479.69	
	643'	486.12			
⊙			0.57	485.55	
	687	492.42			
⊙			0.65	491.77	
	7.34	499.11			
⊙			0.79	498.32	
	7.62	505.94		499.90	
B.M. GS U.S.G. & G. "500"		507.52			
⊙			5.32	500.62	
				502.20	
⊙			2.09	503.85	
	6.49	510.34		505.43	
⊙		511.92			
			1.92	508.42	
⊙		514.11		510.00	
	5.69	515.69			
3700 S South	} of Road Grade King		3.86	510.25	Top Rail
2400 S			3.08	511.03	" "
1400 S			2.23	511.88	" "
040 \$ Top Tie			1.89	512.22	" "
040 6" Rail		518.07	1.31	512.50	
	5.27	519.65		514.38	
100 N	} of Road Grade King		4.42	513.65	Top R
200 N			3.50	514.57	
300 N			2.52	515.50	
		56.05		8.35	509.72

512.80
510.25
312.576
185.90

515.55
512.25
312.75
192.55



36/4

PROF ON E+W ROAD					
	E to W	HI	-S	Elev	
	+S	518.20		512.80	
	560	519.98		514.38	Top Rail
E End 0+0 from Road C&S keys	} →		1.30	516.90	
W					
1+00			3.00	515.20	
2			5.60	512.60	
+90			8.0	510.20	
3 Top of Ground			9.3	508.90	
+69			11.7	506.50	R/W Fence } E
+73			12.9	505.30	
+74			12.4	505.80	
+80			11.7	506.50	
+88			7.8	510.40	
+90			7.5	510.70	✓
3+99.5 = RR			5.6 =	512.60	Top Rail (East)
3+95 = Top Tie			6.2	512.00	
4+04			6.25	511.95	✓
+08			7.4	510.80	✓
+10			7.6	510.60	
+18			9.5	508.70	
+28 R/W Fence (W)			8.6	509.60	
5			6.9	511.30	✓
+10	250' EE	Run 101	6.7	511.50	

S.W. 39
Plow Share
Notch in Curb
S 8.7'

Rt Cen Lower Step
Cast by H.S.
S 88 W 69.2'

N.W. 63

INS: E Rail
S.P. 10 R 59.1' E

36/4

Top rail on ϕ 1st Profile

= Elev 512.8