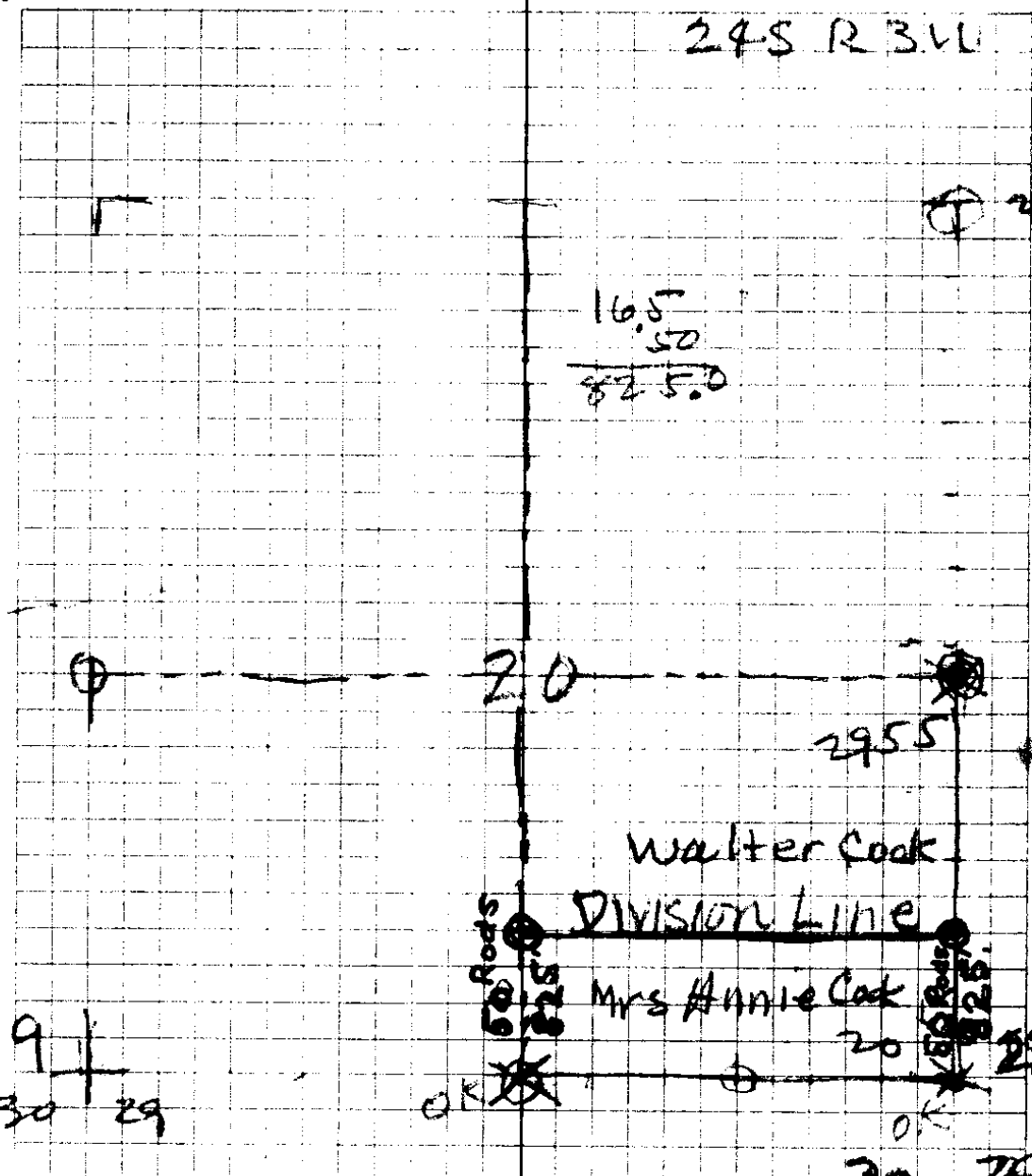


C. S. File No. 35-57

The image shows a page of graph paper with a grid pattern. A vertical line runs down the center of the page, and a horizontal line runs across the top, just below the header. The grid is composed of small squares. There are four hole punches on the left side of the page. The page is otherwise blank.



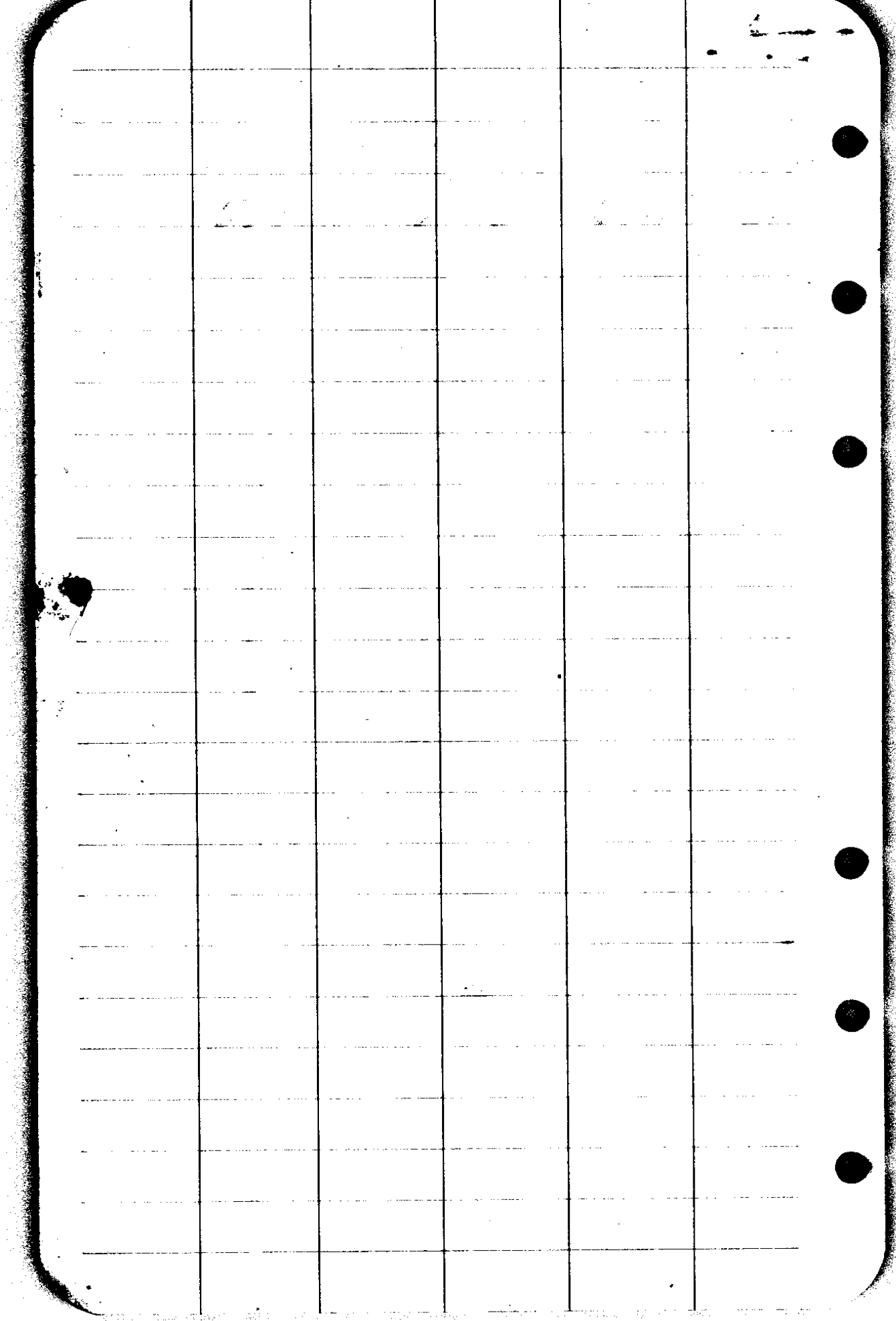
245 R 3.11



19  
30 29

19-20-29-30  
20-21-28-29 Yew Plan  
cedar S 54° E 42 L 20' L  
" Sprag S 43° W 22 L  
36" cedar S 54° E 46 L  
10" Yew N 44° W 26 L  
8" Fir N 52° E 15 L  
6" " S 63 1/2° W 60 L

S bet 20 + 21  
40 = 114 Cal  
5" Maple  
N 75° E 15 L  
8" Fir N 65° W  
32 L



165	147.3
5	120.4
<u>825</u>	<u>296.5</u>
640.2	76.
<u>184.8</u>	<u>640.2</u>

C  
T  
4

2640	3
<u>825</u>	
13200	43500
<u>280</u>	
21120	
43500 ) 2178000	(5)
	<u>217800</u>

184  
103  
21

2983	8
<u>120.4</u>	
1045	
<u>573</u>	

298.3	4
<u>99.4</u>	(7)
1932	
<u>11847</u>	
26847	
<u>26847</u>	
2965102	

165
<u>825</u>
573
<u>21120</u>
21120

1545	6
<u>934</u>	
6180	
<u>7725</u>	
13905	
<u>1473936</u>	

C.S. File No. 35/59

S bet. 20 + 21

12 = Marshy Swale

14.5 = Leave "

14.75 Travel to Boh. Mines

18.25 = Cal. Creek 100 ft Wd

40 = Cr

80 = Cr

Cr 16-17-20-21

10" Cedar N 70° E 56 Z

12" S 10° E 13

40" S 50 W 22

6" N 20 W 31 Z

N bet 19 + 20

40 = 1/4 Cr

24" Fir N 40° W 5 Z

16" Ced. S 59° W 54 X

48.2 = Brook 2 ess wd

6/4  
1/2