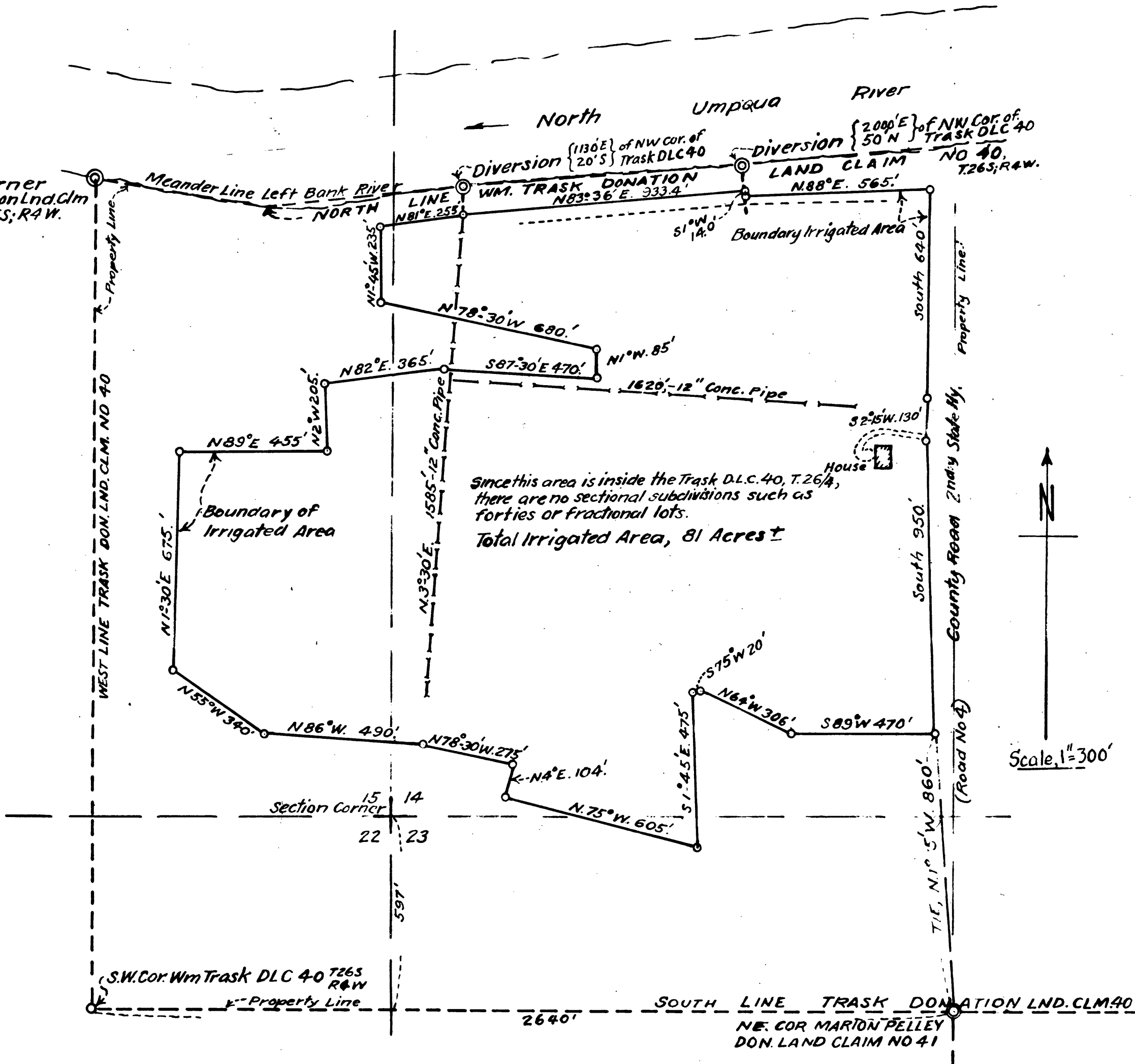
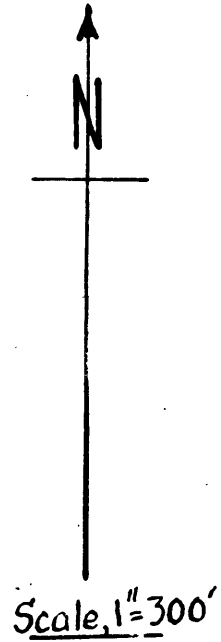


N. W. Corner
Wm Trask Don Lnd. Clm
No 40, T 26 S; R 4 W.



Since this area is inside the Trask D.L.C. 40, T. 26 S, R. 4 W., there are no sectional subdivisions such as forties or fractional lots.
Total Irrigated Area, 81 Acres ±



County Surveyor's office, Roseburg, Ore
DATA TO ACCOMPANY APPLICATION FOR PERMIT
FOR IRRIGATION WATER FROM N. UMPQUA RIVER
BY PAUL SIMPSON, GLIDE, ORE.
IN WM. TRASK D.L. C. 40, T 26 S; R 4 W; W.M.
July 1940 Arthur Boyer, Dep. Co. Sur. Scale, 1" = 300'

CS FILE FOLDER

CONTAINS

MORE

INFORMATION