

Parrott St.

Lane To Mosher

NE Richardson Tr

Bill Crear Road



- 0420 on Pav. 45503

East = Lt. Cent Lane West = Rt.

	East = Lt.	Cent Lane	West = Rt.
	55.73	55.49	54.32
	5.87	5.61	5.78
+18	30	19	14
	55.90	55.70	54.80
	5.20	5.40	6.30
+38	30	19	19
	55.71	55.61	54.78
	5.39	5.49	6.32
+50	30	13	30
	55.63	55.90	54.96
	5.47	5.20	6.14
+75	30	13	30
	56.25	55.80	54.90
	4.83	5.30	6.20
	30	13	13
	56.12	55.96	54.65
	4.98	5.14	6.45
	30	13	13
	56.78	55.79	54.81
	4.32	5.31	6.29
	30	13	19
	57.32	56.35	55.19
	3.78	4.75	5.91
	30	13	13
	58.33	56.45	55.55
	2.77	4.65	5.55
	30	13	13

5 on curb 54.95

6.78 / 14 = 6.75 / 30

54.75 / 6.35 / 30

54.78 / 6.32 / 30

54.96 / 6.14 / 30

55.15 / 5.95 / 30

55.19 / 5.91 / 30

55.20 / 5.90 / 30

55.60 / 5.50 / 30

55.36 / 5.74 / 30

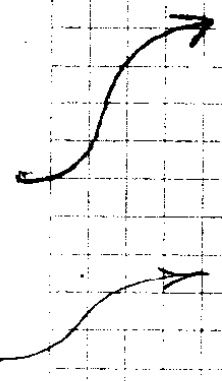
	+	Δ	-	Rod	
		465.94			
2+25				9.52	456.42
+50				9.05	456.89
+75				8.64	457.30
3+00				7.84	458.10
+25				7.55	458.39
+50				7.24	458.70
End Pk. +515				7.17	458.77
+53				7.07	458.87
+68				6.80	459.14
+82 = Monument				6.86	459.08

East H.I. = 65.94

West

59.17 <u>6.77</u> 30	57.97 <u>7.97</u> 18	57.39 <u>8.55</u> 13	55.84 <u>10.10</u> 13	55.69 <u>10.25</u> 30		
59.90 <u>6.04</u> 30	60.3 <u>5.66</u> 23	58.1 <u>7.87</u> 19	57.4 <u>8.53</u> 13	56.4 <u>9.50</u> 13	56.1 <u>9.80</u> 30	
	60.5 <u>5.40</u> 30	60.5 <u>5.40</u> 18	58.0 <u>7.95</u> 13	56.7 <u>9.23</u> 13	56.6 <u>4.31</u> 20	57.6 <u>8.32</u> 22
	61.1 <u>4.87</u> 30	61.4 <u>4.50</u> 18	58.9 <u>7.06</u> 13	57.7 <u>7.70</u> 8	57.7 <u>8.23</u> 13	58.1 <u>7.86</u> 22
	61.3 <u>4.60</u> 30	61.5 <u>4.40</u> 18	60.0 <u>5.93</u> 13	58.7 <u>7.20</u> 10	57.7 <u>8.24</u> 13	58.3 <u>7.62</u> 22
		61.2 <u>4.76</u> 30	61.1 <u>4.82</u> 22	58.9 <u>7.04</u> 13		
		58.86 C <u>7.08</u> 14	G-58.43 <u>7.51</u> 14	Q-58.36 <u>7.58</u> 14	curb-58.71 <u>7.23</u> 14	
		58.24 C <u>6.70</u> 14	58.74 G <u>7.20</u> 14	58.03 Q <u>7.91</u> 14	C=58.47 <u>7.47</u> 14	

C.C. side walk



Look up CONC. WORK  
GUTTER NE COR.

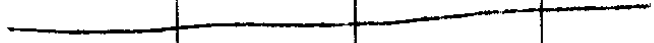
N End Conc Walk - 6' wa

N End 54.5

S " 4.75

S End

Block



Point on S Side Lane St at 100'

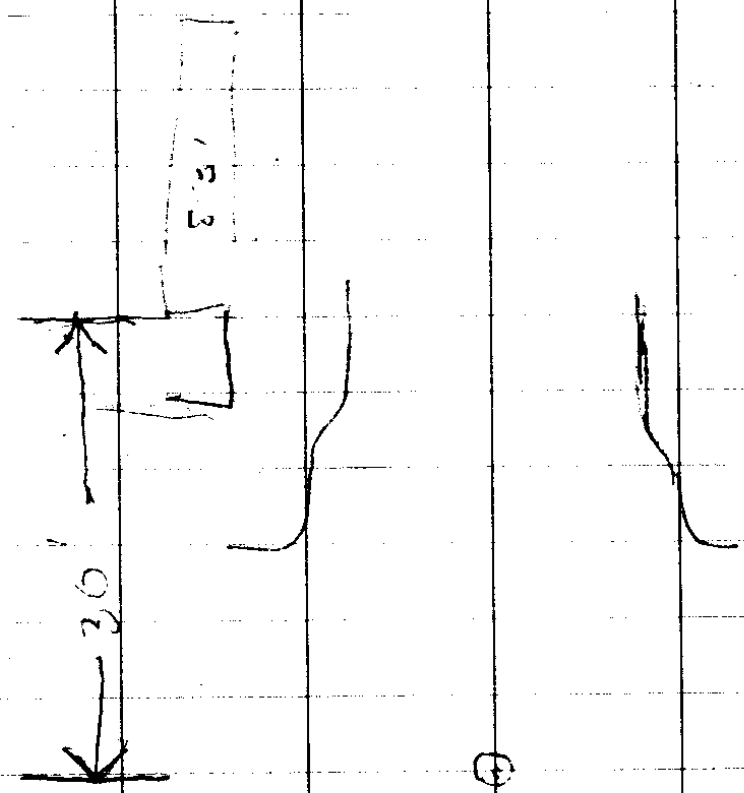
to S of St Intersect 5.7

Top of C.B. to East 5.2

Gutter = 5.2

Curb 4.7

54.95
5
55.45



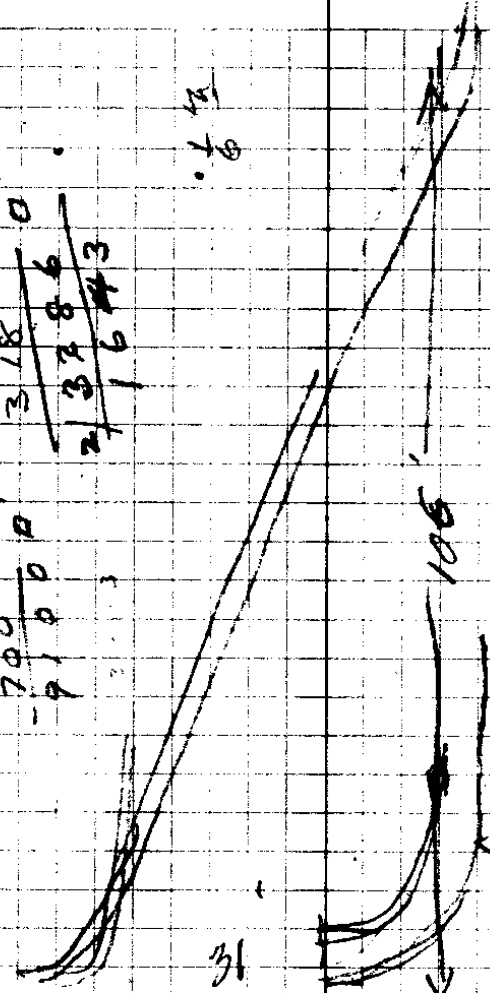
30  
13

(1)

106
31
125
318
86
338
1643

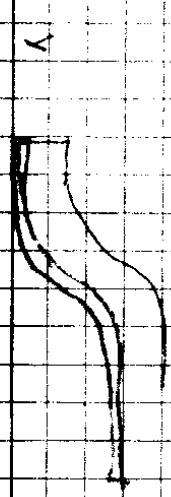
360
26
700
91000

14  
16

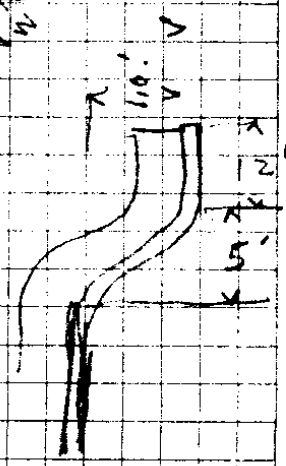


31

58



100  
12



12  
5

