

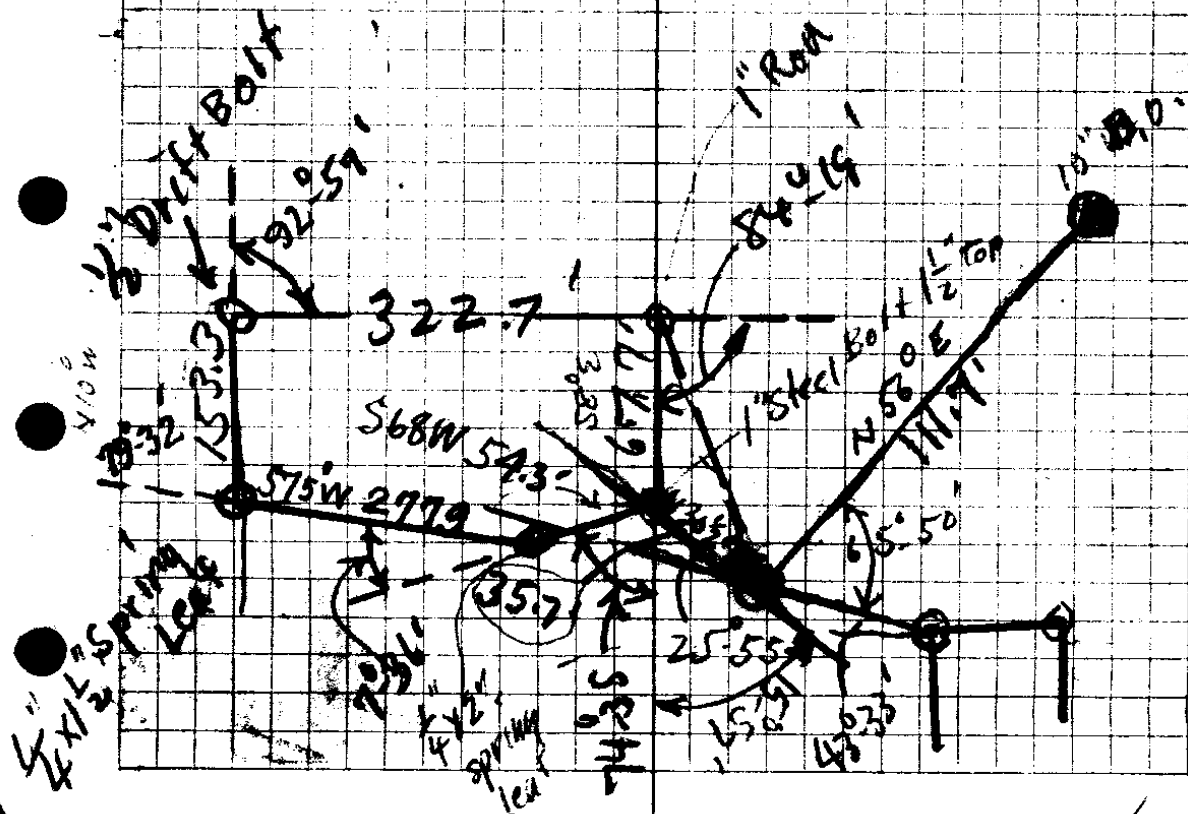
460
306.7
 153.3

1.77
 .66
10.26
 102.6
112.86
 99.66
13.20

1.81
 .66
9.06
 50.6
99.66

5.47 Chs full width
4.86
 .61 7
 .66 3
36.6 3
366
40.24
 12

N 45° 27' W
 8-52 W
39-35



85/558

beg at pt on N Line Coos B. Way Rd + running th. N. along W. Line Coles Valley Rd 5.47 chs to angle in said Rd th. N 81°30' W along S Line said Rd 4.65 chs th 5.697 chs to N Line Res. Coos B. Way Rd, th easterly along N. Line said Rd 5.0 chs to beg = 3Ac

Also Beg at pt fr. wh the SW cor Jer Hunt DLC brs S 8°-52' E 1.51 chs th N 86° 10' W 4.86 chs th S 40° W 0.87 chs th N 83° 40' E 4.89 chs to beg excepting from 3Ac.

Comm at SW cor Hunt DLC - beg at a pt. fr. wh the SW cor thereof th 275 Rd brs S 57° 40' E 4.683 chs. + running th N. along W. Line Res Coos B. Way Rd. 116'-6" to angle in said Rd; th W 13° S along S. Line said Rd 4.65 chs th S 22° 30' E 116'-6" th E 13° W 4.47 chs to W. Line Rd + beg.

98/366

67/459

35/43

35-43

Comm at SW cor Hunt DLC -
 beg at pt fr wh. SW cor DLC
 brs S 70° 40' E 1.71 chs - th S 73° W 4.9
 chs - th N 20° 30' W 2 chs; th
 N 87° E 4 1/2 chs th S 70° 40' E
 89 LRS to beg ✓

Except from 3 Ac
 Comm at SE cor of Strip deeded
 by Johnson to Mc Daniel th
 southerly along Coles Valley Rd
 12' th S 73° W + parallel with
 S Line said tract 4.9 chs
 th N 20° 30' W 12' th easterly
 along S. Line said tract 4.9 chs
 to NE cor aforesaid tract -
 running th northerly along
 Coles Valley Reeburg Way Pa. 21'
 th S 87° W + parallel with

Comm at SW cor Huntley DLC
 44 56 2 Beg at pt fr wh. S. W cor DLC
 brs S 70° 40' E 1.71 chs th
 S 73° W 4.9 chs th
 N 20° 30' W 2.0 " S 70° 40' E
 N 87° E 4 1/2 ch 89 LRS
 to beg

CS FILE FOLDER

CONTAINS

MORE

INFORMATION