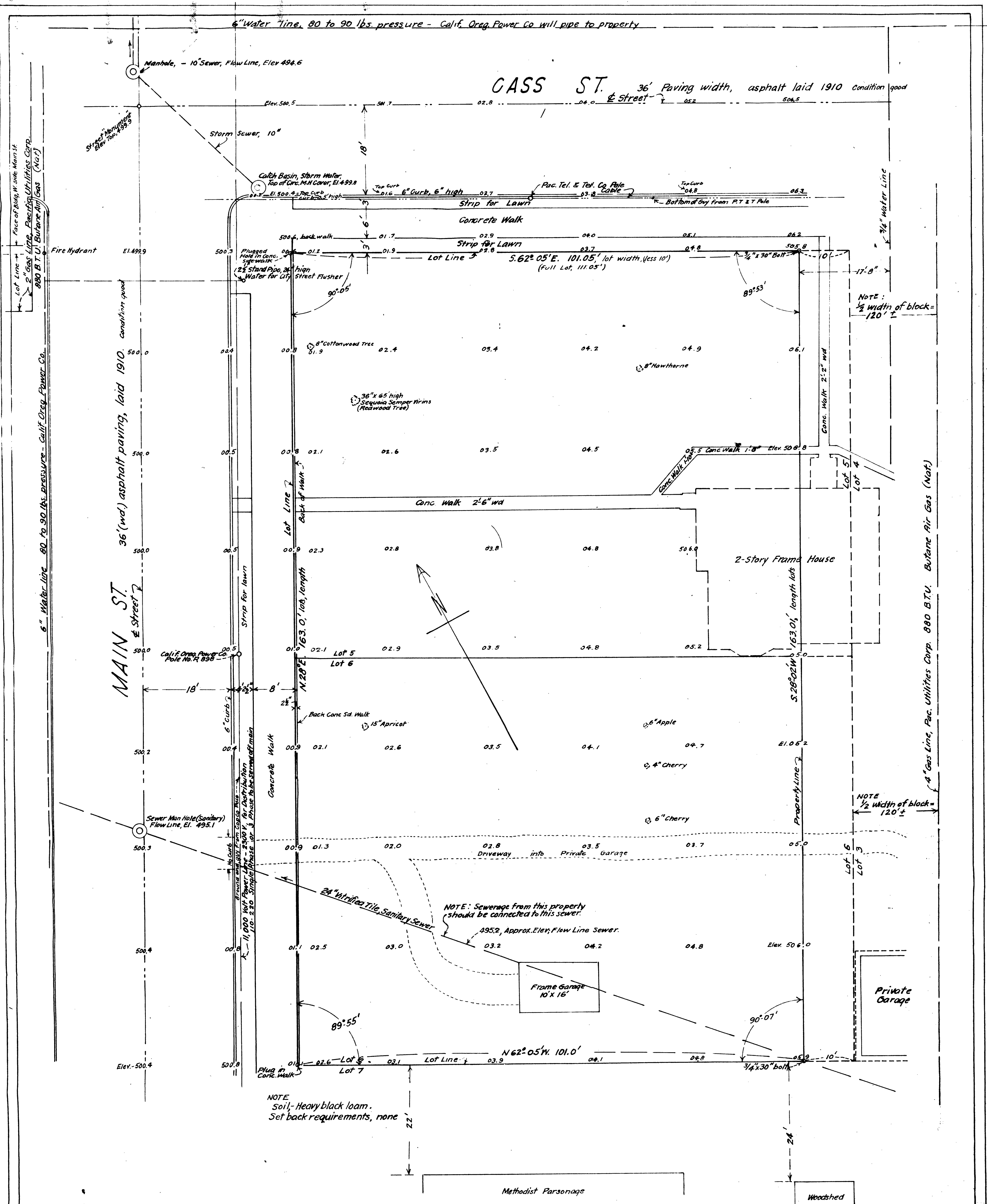


6" Water Line, 80 to 90 lbs. pressure - Calif. Oreg. Power Co. will pipe to property

CASS ST. 36' Paving width, asphalt laid 1910 condition good



COUNTY SURVEYOR'S OFFICE, ROSEBURG, ORE.  
 LOTS 5 & 6, EXCEPT EAST 1/2 SAID LOTS, IN  
 BLOCK 47, ORIG. TOWN OF ROSEBURG,  
 DOUGLAS COUNTY, OREGON.  
 SEPT, 1941 BOYER, DEPCO. SURV'R SCALE, 1" = 10 FT.

CS FILE FOLDER

CONTAINS

MORE

INFORMATION