

TRACT of land The Baries of wh are
described as follows: -

Beginning at the East quarter corner
of Sec 26 T32S R6W Wm. and running
thence South ^{3/4 mi} in the section line ~~to~~
Sec 26 ^{and} 35 said T & R to the
~~the~~ NW corner of the SW 1/4 of the NW 1/4
Sec 36 said T & R thence East
along the north line of said SW 1/4
approx 4 chains to the center of the Channel
of Car Creek thence following
the meanders of Car Creek in a
S westerly direction to a point on the
East right of way line of the ^{present} Pacific
Hwy measured 30 ft out at an angle
from its \perp - at a point approx 800
The ^{west} line of the S 2 & NW 1/4 Sec 35
said T & R, thence northerly along
said line said by ~~approx 685'~~
to Highway infra Sta 111 + 12.8 thence
contin on E line said R/W N 1/4 Sec 35
22.3700 ^(12 ft) to a point; thence N 50° 50' W
18.48 ch (a 70') to a point; thence
East 8.11 ch \perp to the NW corner
Sec 26 said T & R, thence north
1/4 mi to the NE corner said SW 1/4 NW
corner NW 1/4 Sec 26 thence
East 1/4 mi to place of
Excepting 0.947 an acre

66
26

To a pt
wh is
57 NW 1/4
Sec 35

11/10/11
12/19/11

DOUGLAS COUNTY
OREGON

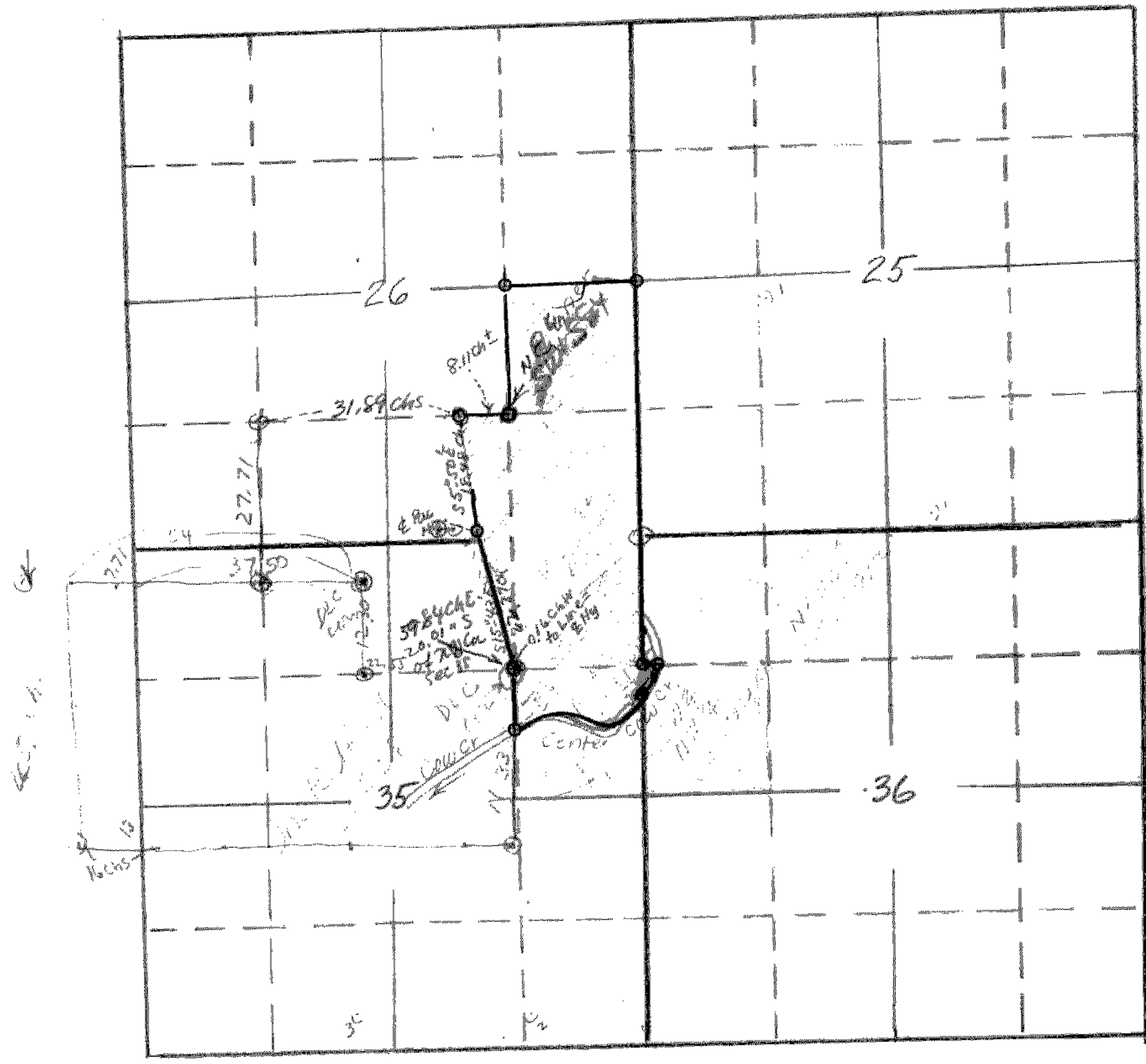
Portion of J.A. Jacques Estate "K 43" of Cow Creek

A tract of land the boundaries of which are described as follows:-

BEGINNING at the East quarter section corner of section 24, Twp. 32 S; Rg. 5 W; 5.M., and running thence South $5/4$ ths of a mile on the east section line of sections 24 and 25, said Twp. & Rg; to the N.W. corner of the N.W. $1/4$ of the N.W. $1/4$ of section 26, said Twp. and Rg., thence East approx. 4 chains or approx. 264 ft. to the center of the channel of Cow Creek, thence following down stream in the center of said creek in a southeasterly direction to a point on the east line of the present location of the Pacific Highway at a point measured 30 ft. at right angles out from the center line at approximately the west line of the S.E. $1/4$ of the N.W. $1/4$ of sec. 35, said Twp. and Rg., thence northerly, along said east right of way line, to a point which is approximately 80.54 chs. East and 29.1 chs South of the N.W. corner of said section 35, thence continuing on the east line of said highway right of way, S. 15° -43' W. 22.87 chs or 1416.3 ft. to a point, thence S. 20° W. 18.48 chs. or 1117.7 ft. more or less, to the N.E. corner of the S.E. $1/4$ of the S.E. $1/4$ of said section 26, thence North $1/4$ mile to the N.E. corner of the N.E. $1/4$ of the S.E. $1/4$ of said section 26, thence East $1/4$ mile to the place of beginning, excepting 0.94 of an acre which is owned at present by J.A. Lawson the deed being recorded in county clerks records in Vol 95, Pg. 465, the net acreage being 15E.0 acres, more or less, all the above being situated in secs. 24, 25 and 26, Twp. 32 S; Rg. 5 W; Willamette Meridian, Douglas County, Oregon

Per Dist Atty Long:
June 10, 1941
A.B.

179
 11/6



Job Davis
 29th Ave
 9/1/4/11

←
 No Survey
 Key different
 to locate
 call for improvement

1" = 200 chs

Mrs J. Jaquess (Widow)

T32S R6W

Area desc. in deed

July 10-1941

No Survey

LESS LOGS
 rd 21/2
 44 1/2
 77/181

Not in
 H.P. area

66
12
62
79
238