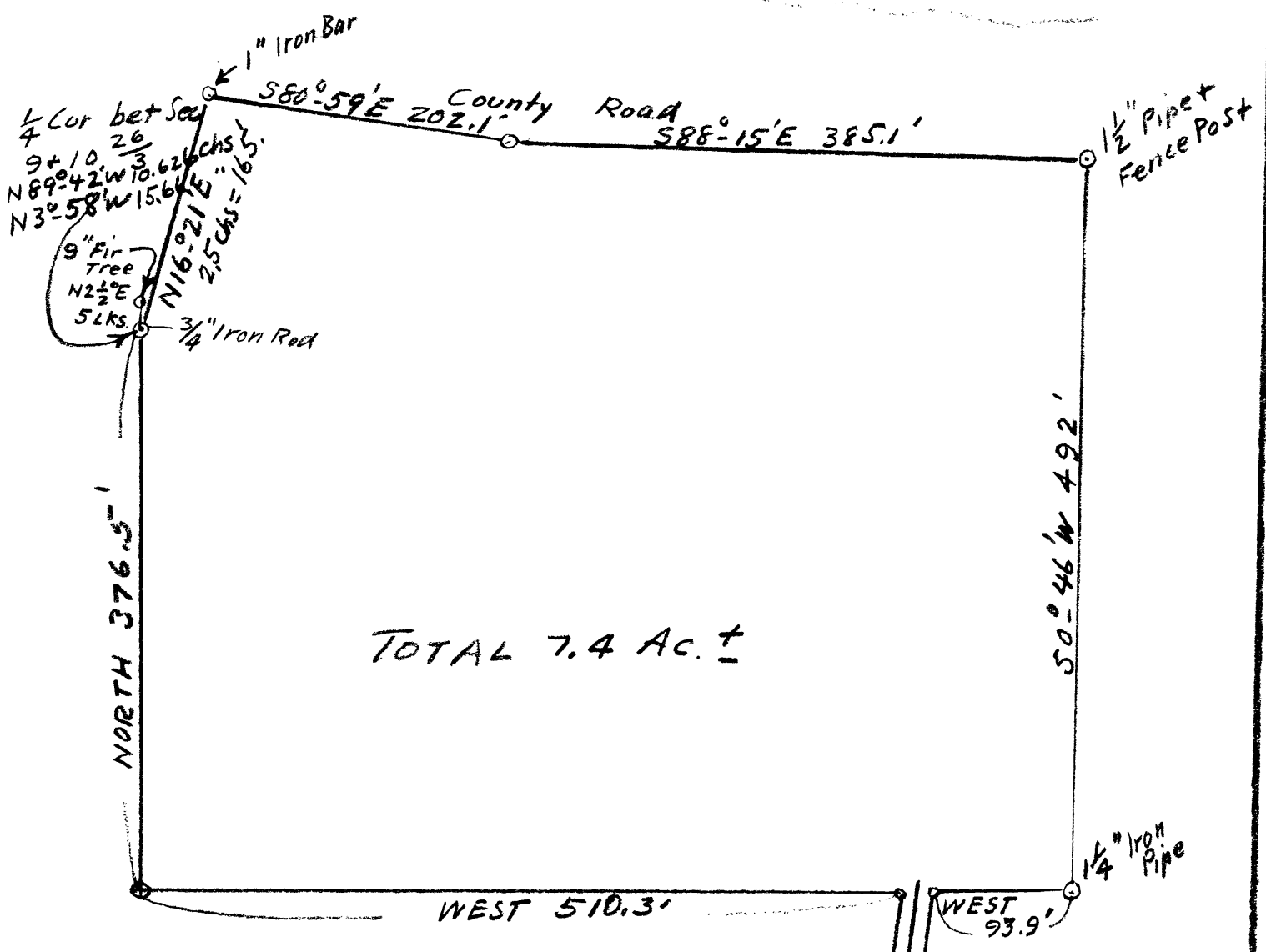


N. Umpqua River



TOTAL 7.4 AC. ±

PORTION RETAINED IN SALE OF
 HARVEY & HELEN DAVIDSON RANCH
 1/4 SEC 10, T 26S., R 3W W.M.
 GLIDE OREGON

July, 1941 A Boyer Scale 1" = 100 ft.

N 8° E 384.5'
 20 FT. RT. OF WAY
 S 80° W. 384.5'

Spring
 West 20.2'

Co. Clerks Record
 Vol 101 / Pg 23

CS FILE FOLDER

CONTAINS

MORE

INFORMATION