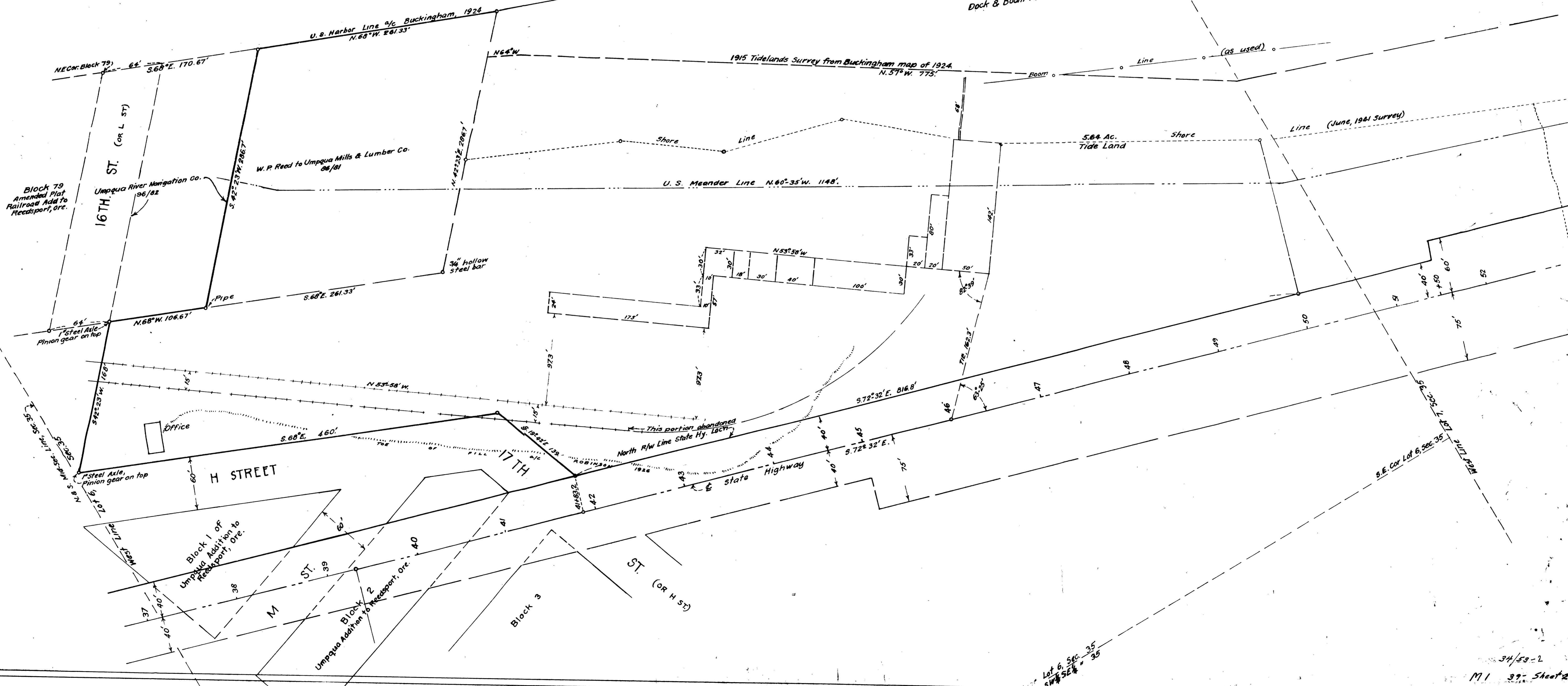


RIVER

UMPQUA

Umpqua Mill Dock and Boom Permit Line

Dock & Boom Permit, 10.2 Ac. between low water and Harbor Line, (from Buckingham) in Sec. 35.



Block 79
Amended Plat
Railroad Add to
Reedsport, Ore.

Block 1 of
Umpqua Addition to
Reedsport, Ore.

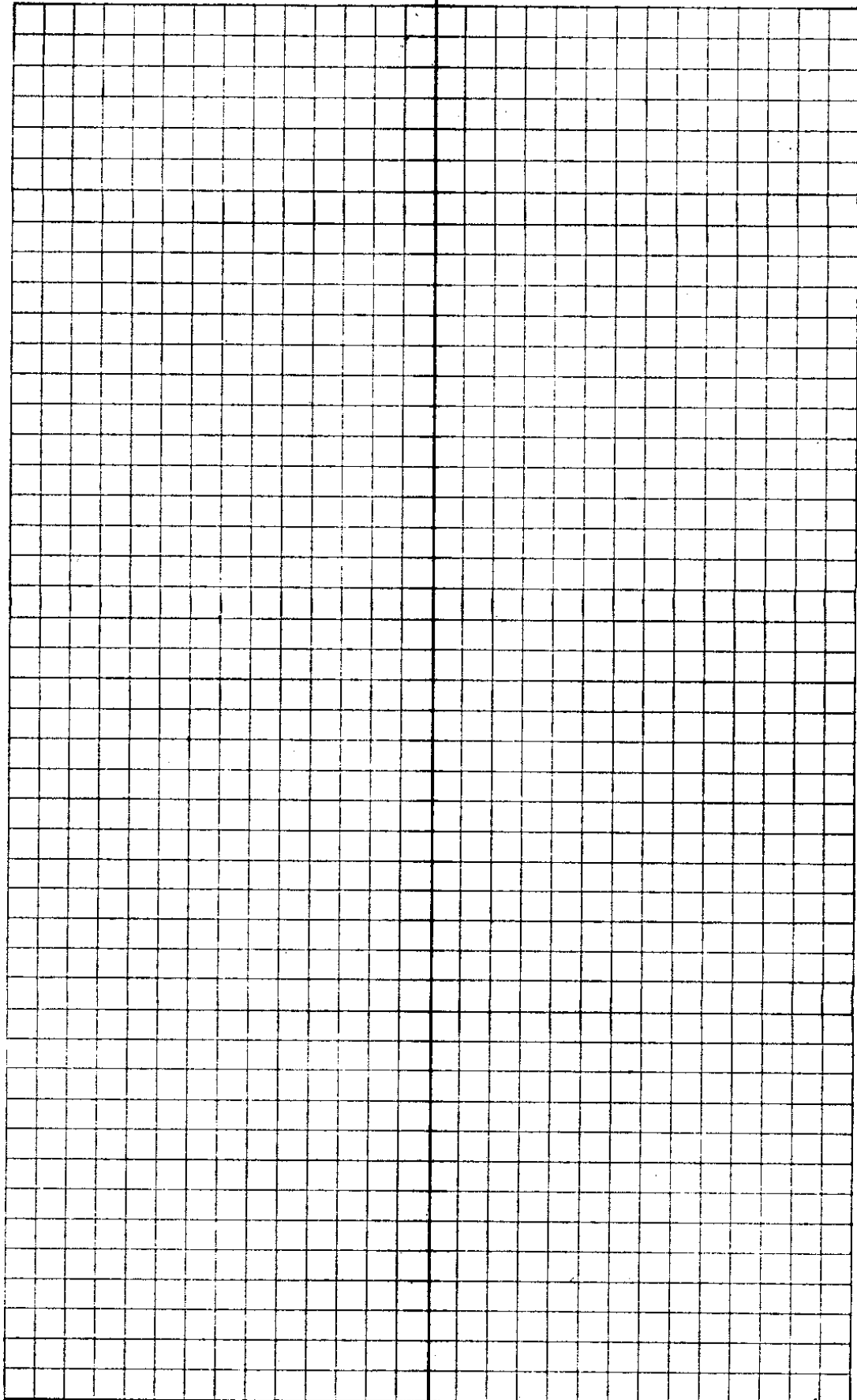
Block 2
Umpqua Addition to
Reedsport, Ore.

Block 3

Lot 6, Sec. 35
SW 1/4

MI 39 Sheet 21

34-53

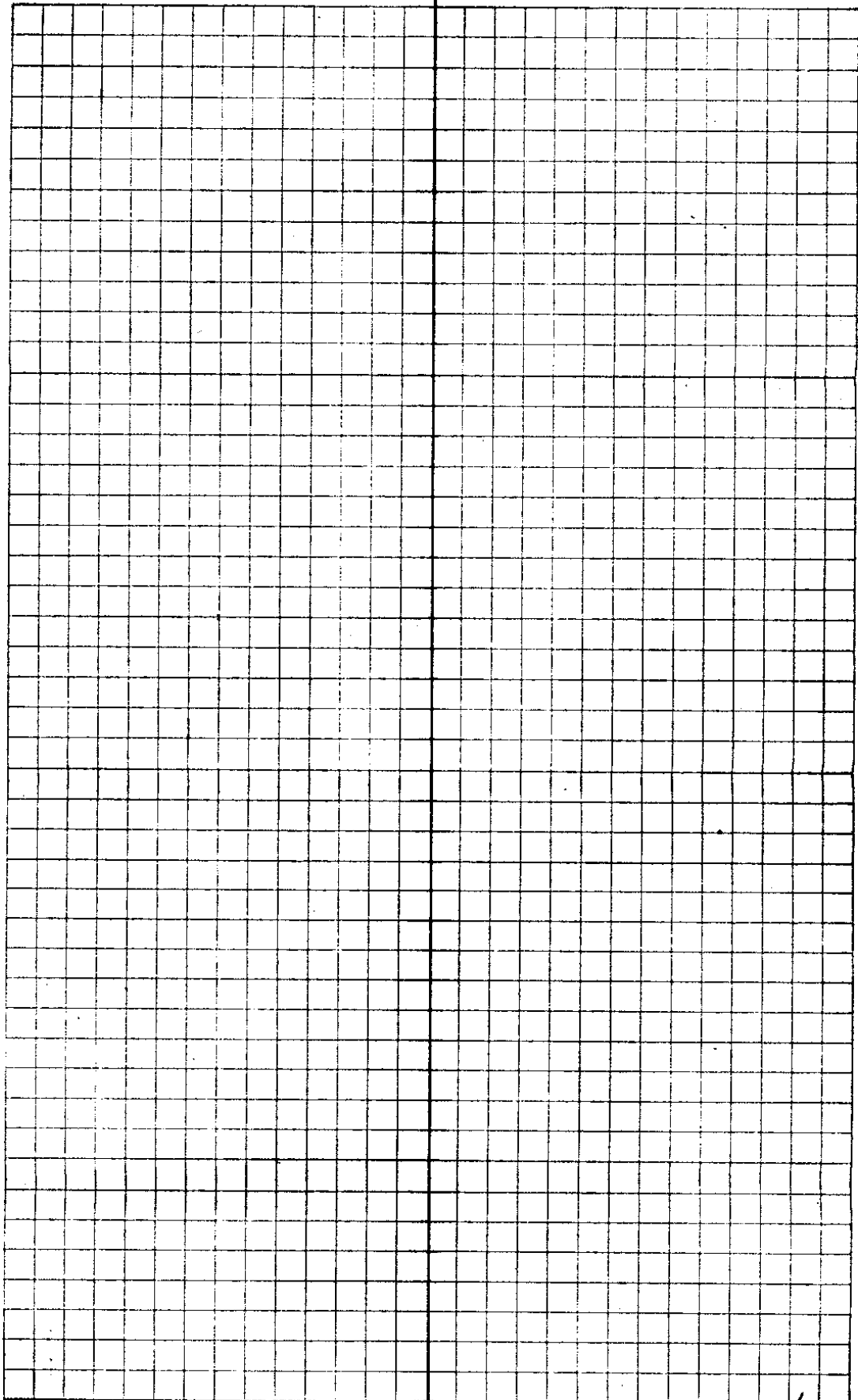


C. S. File No. 34/53

Sta	IS	HI	-S	Elev	BM opp
	5.0	69.23		64.23	51+03
			1.36	07.87	Floor Mill

75' L

$$\begin{array}{r} 04.23 \\ \underline{5} \\ 09.23 \\ \underline{1.36} \\ 07.87 \end{array}$$



C. S. File No. 34/53

R/W width on River side lty.

50 = 40

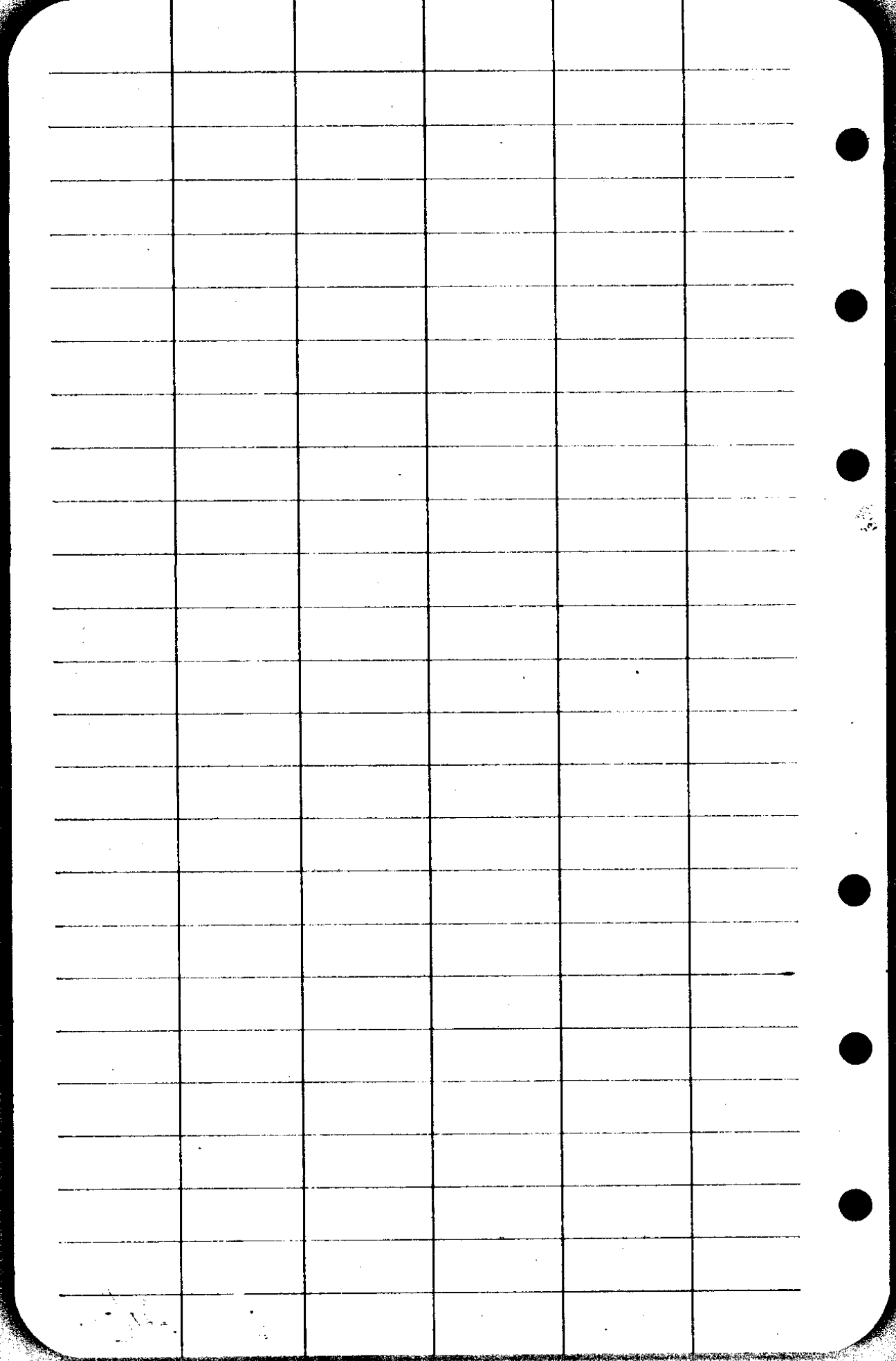
51 + 50 = 60' from 40'

57 + 50 = 60' to 90'

64 = 90 to 40'

B.M. 75' L 51 + 03

E1 04.23 - Root 8" Spruce



Umpqua Mill

Old office

Prop
cut
SW

OFFICE

FRONT

16

78°

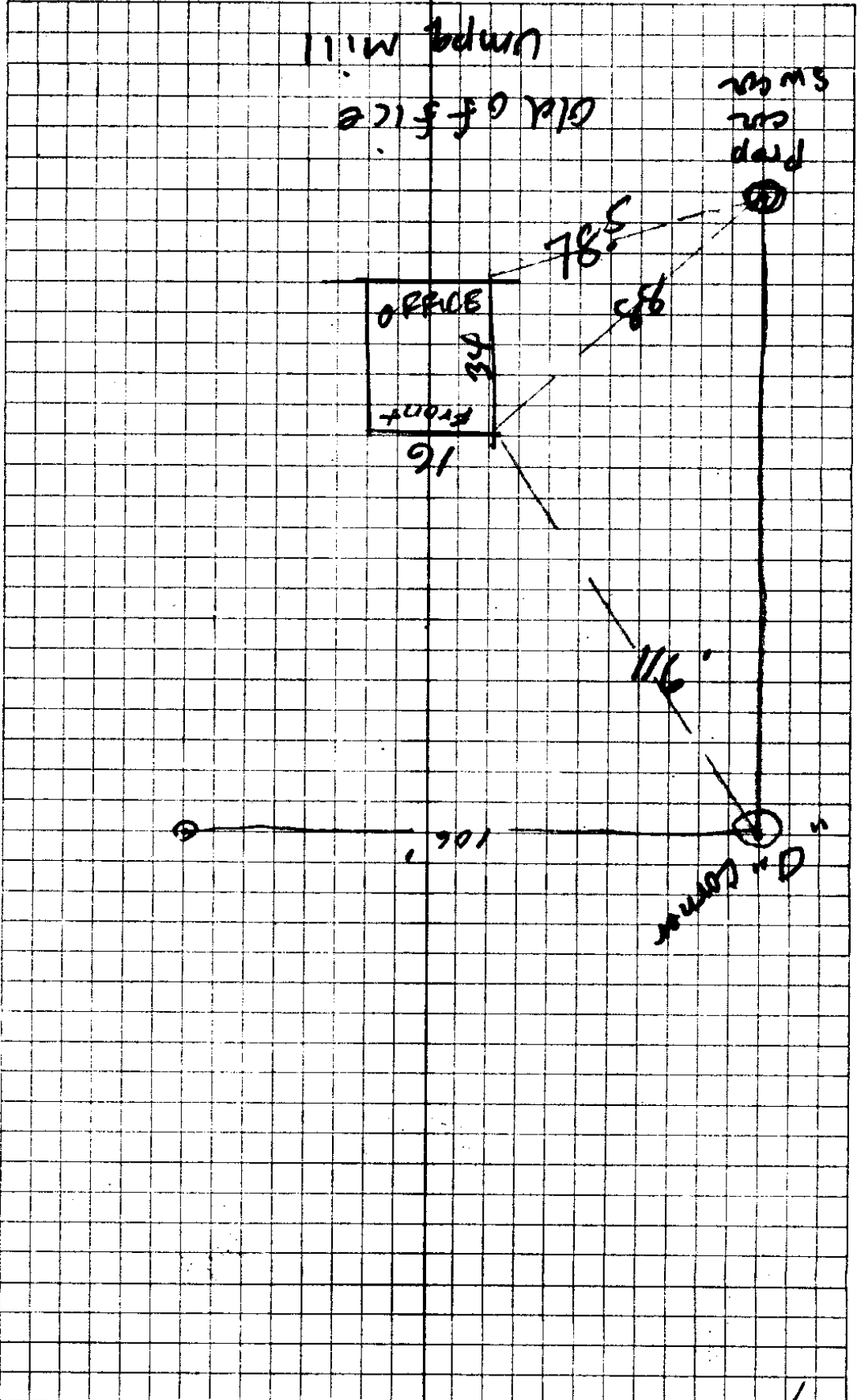
88

116

106

100' x 100'

C.S. File No. 34/53



Mr Hubbard (Russell J)
709 - NW 20th Ave
Cor Irving St
Portland

Bdwy 2864

1 Copy Rdsport - Box 275.
1 " Port-Special

CS FILE FOLDER

CONTAINS

MORE

INFORMATION