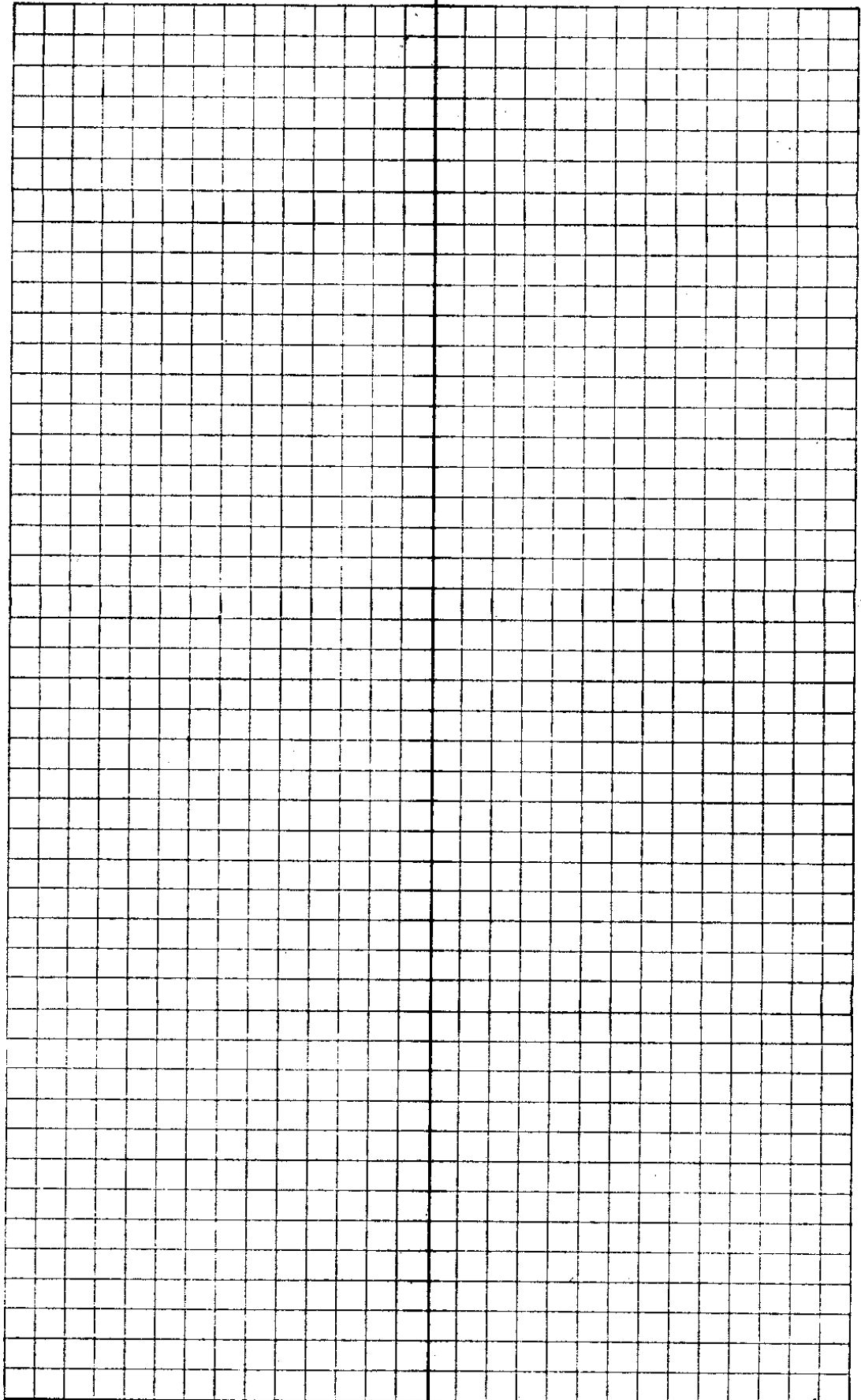


34-53



C. S. File No. 34/53

Sta	IS	HI	-S	Elev	BM opp
	5.0	69.23		64.23	51+03
			1.36	07.87	Floor Mill

04.23
 5

 09.23
 1.36

 07.87

R/W width on River side lty.

50 = 40

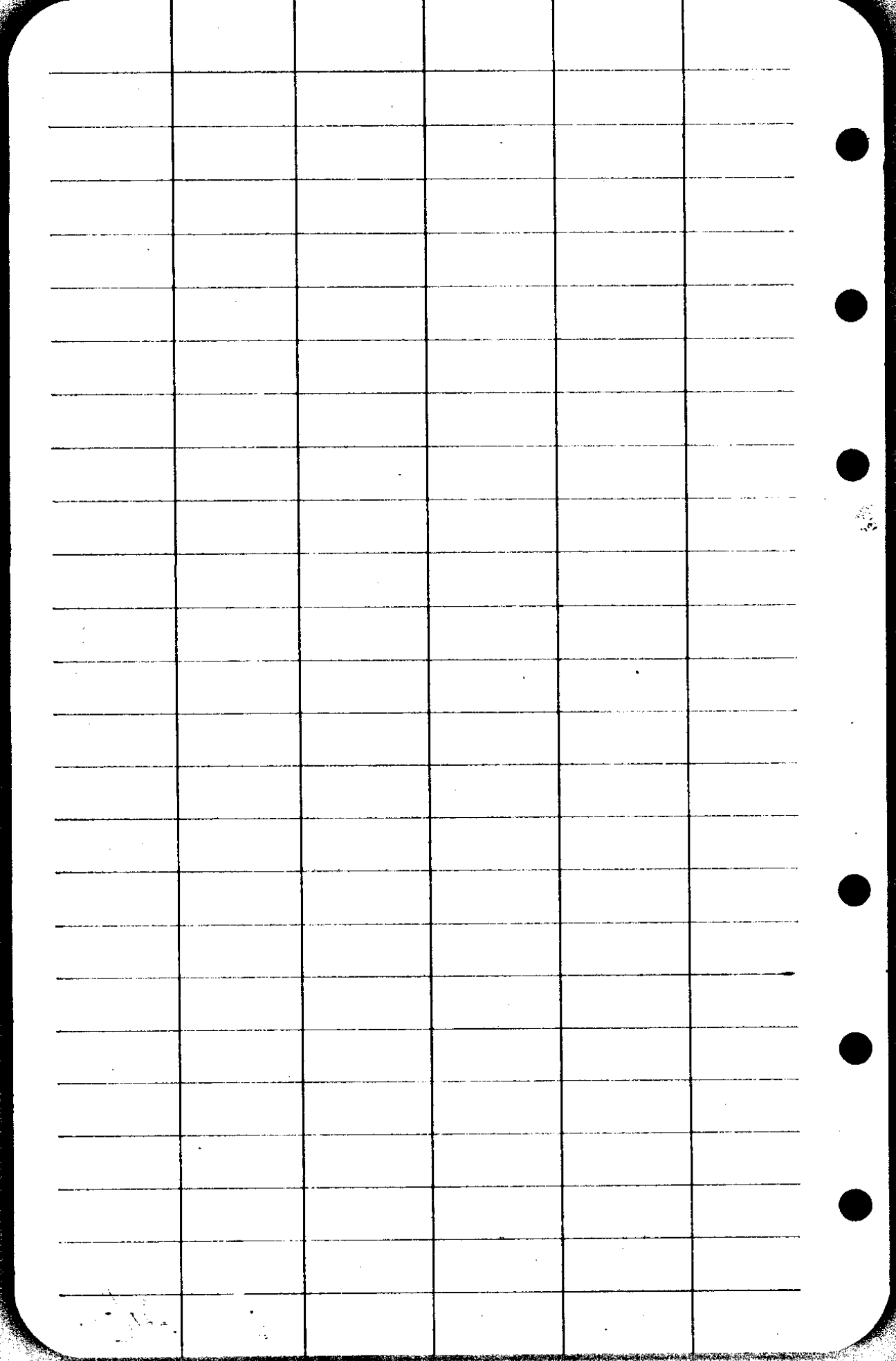
51 + 50 = 60' from 40'

57 + 50 = 60' to 90'

64 = 90 to 40'

B.M. 75' L 51 + 03

E1 04.23 - Root 8" Spruce



Umpqua Mill

Old office

Prop
cut
SW 4th

OFFICE

FRONT

16

78°

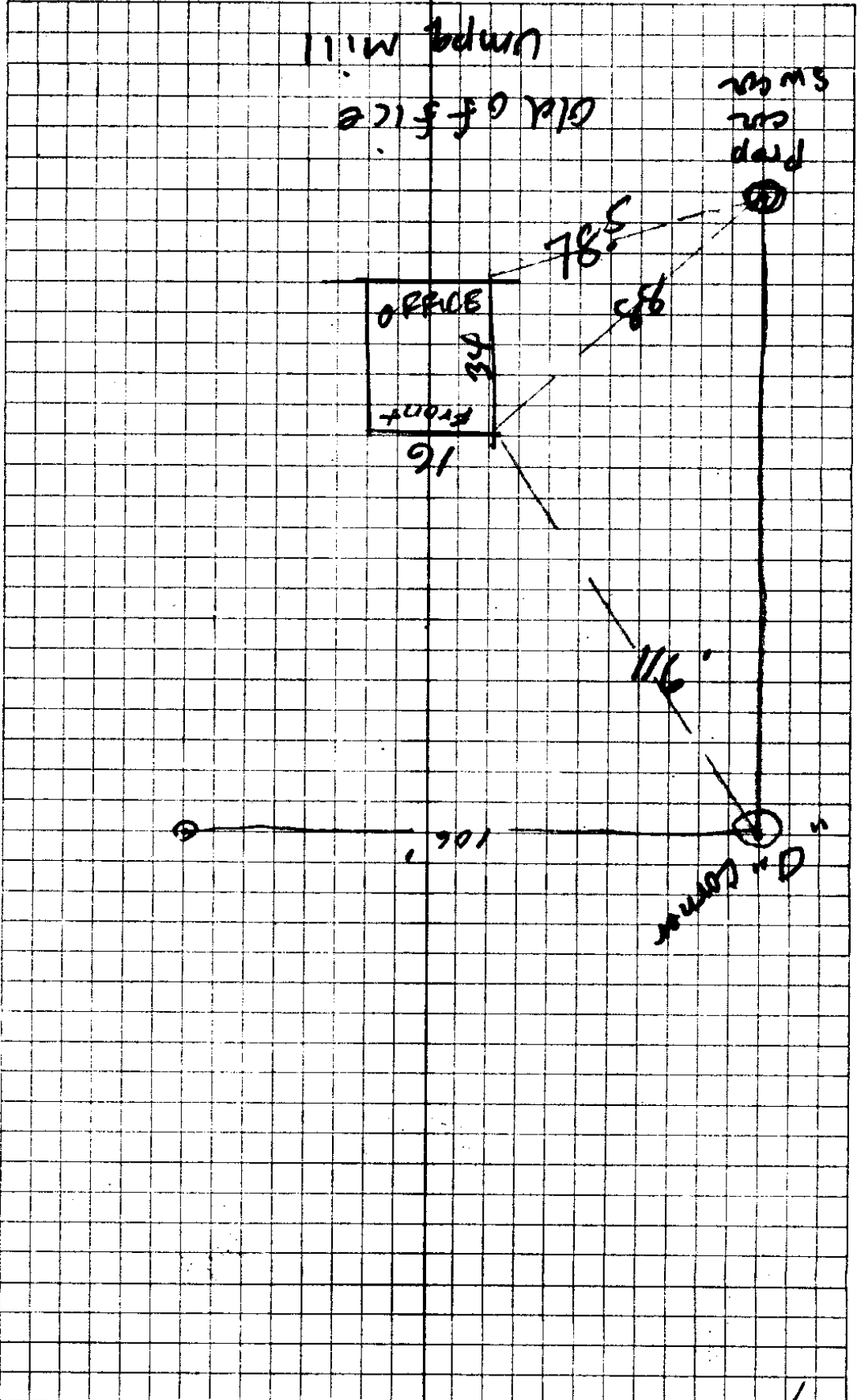
58'

116'

106'

SW 4th

C. S. File No. 34/53



Mr Hubbard (Russell J)
709 - NW 20th Ave
Cor Irving St
Portland

Bdwy 2864

1 Copy Rdsport - Box 275.
1 " Port-Special

CS FILE FOLDER

CONTAINS

MORE

INFORMATION