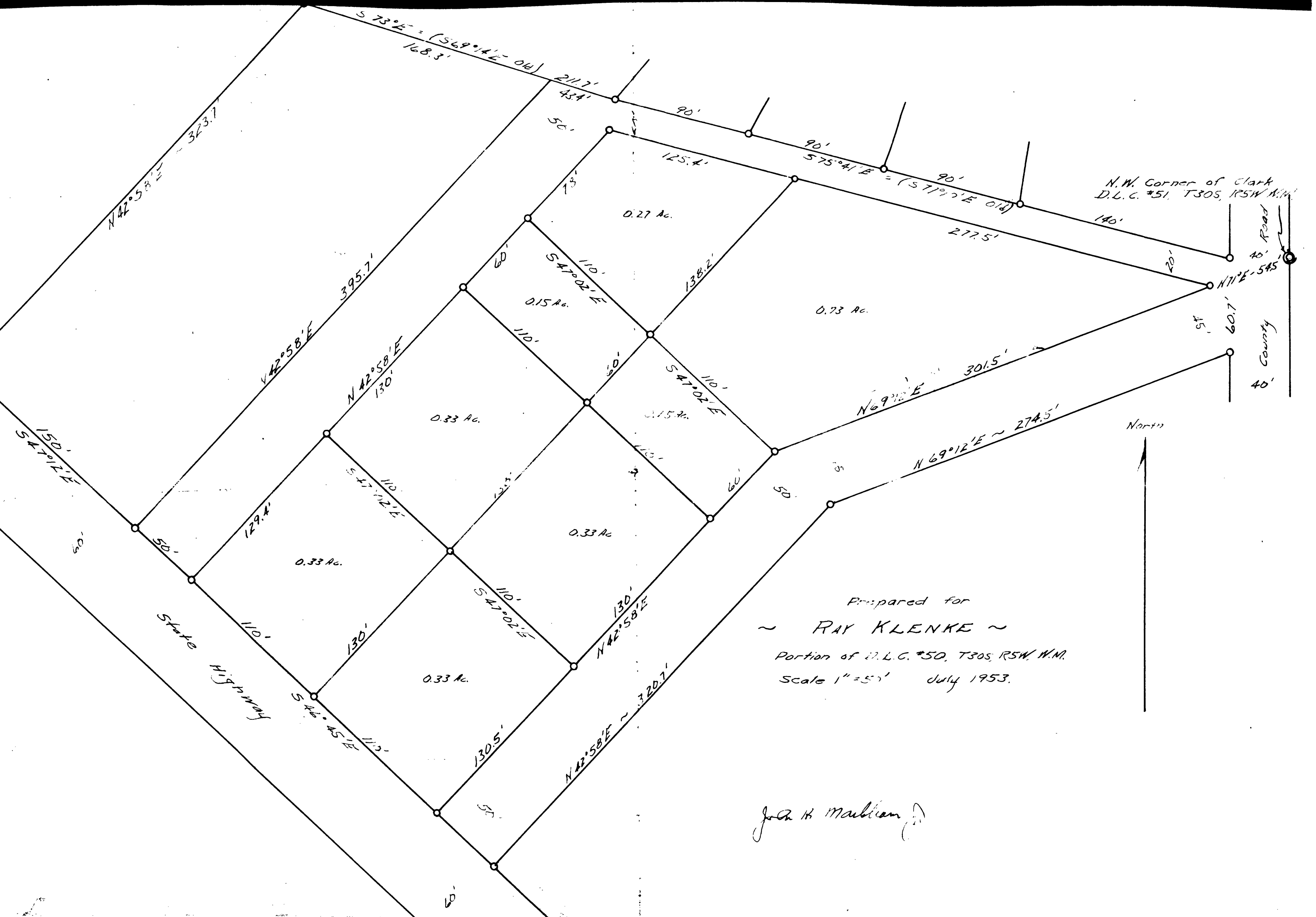


34/49 173



TUES. MAR 25
1941



AM

PM

Setup on 1 B.S on Point 395.7' back

= S 79° W = Brg (Needle)

Time = 1.57 PM

Hor. = 40° 05' L

Vert. = 43°

Brg to Sun S 38° W



Time
Hor 13
Vert
Brg to Sun



1.59 PM S 79° W to B.S.

Hor 39° 25'

Vert 42° 30'

S 39 1/2° W to Sun



2.02

H 39° 23'

V 42° 30'

S 38 1/2° W to Sun



2.64

Hor 38° 12'

Vert 41° 45'

S 40° W to Sun

38 12

39 23

77 35

38 - 47

True Brg = S 77 3/4° W

8 hrs, 13 min 12 sec

124° - 15' Long

Lat 43°

C.S. File No. 34/49

(1170) Ford Auto Camp

Tuesday
Mar. 25

$\Delta 8$
S 9° W 173' = S 7° 44' W =

$\Delta 8$ this one out $\Delta 332-03' R$
S 25° E 241.1 = S 25° 12' E

might come out
 $\Delta 6 =$ this pt out $\Delta 89-40' R$
S 73° W 442.5 + 201.5 = 644.0 (231' to cen R V) $\Delta 99-12' L$

S 65° W 140. $\Delta 53-20' L$ S 65° 10' W ;

2" $\Delta 5$ on top bank by Pit Tree (on line);
cast pipe cor. N 61° W 84.8 N 61° 30' W

$\Delta 4$ (this pt out) $\Delta 55-37' L$
not on line

N 6 1/2° W 178.7 N 5° 53' W

3/4" pipe $\Delta 3$ $\Delta 58-05' L$
Leave ordinary - go toward Riv. - (on line)

N 50° E 303.0 N 52° 12' E

1/2" $\Delta 2$ $\Delta 68-51' R$

N 16 1/2° W 107.0 = N 16° 39' W

$\Delta 1$ 1" I.P. 30' N of Hy (Leave Hy) $\Delta 94-13' L$
 $\Delta 85-47' R$

N 77° E 395.7 = N 77° 34' E
(513° E)

Point (at Tie Point) - HUB } 7.7 R (90°) $\Delta = 0-2' R$

N 77° E 166.6 = N 77° 32' E

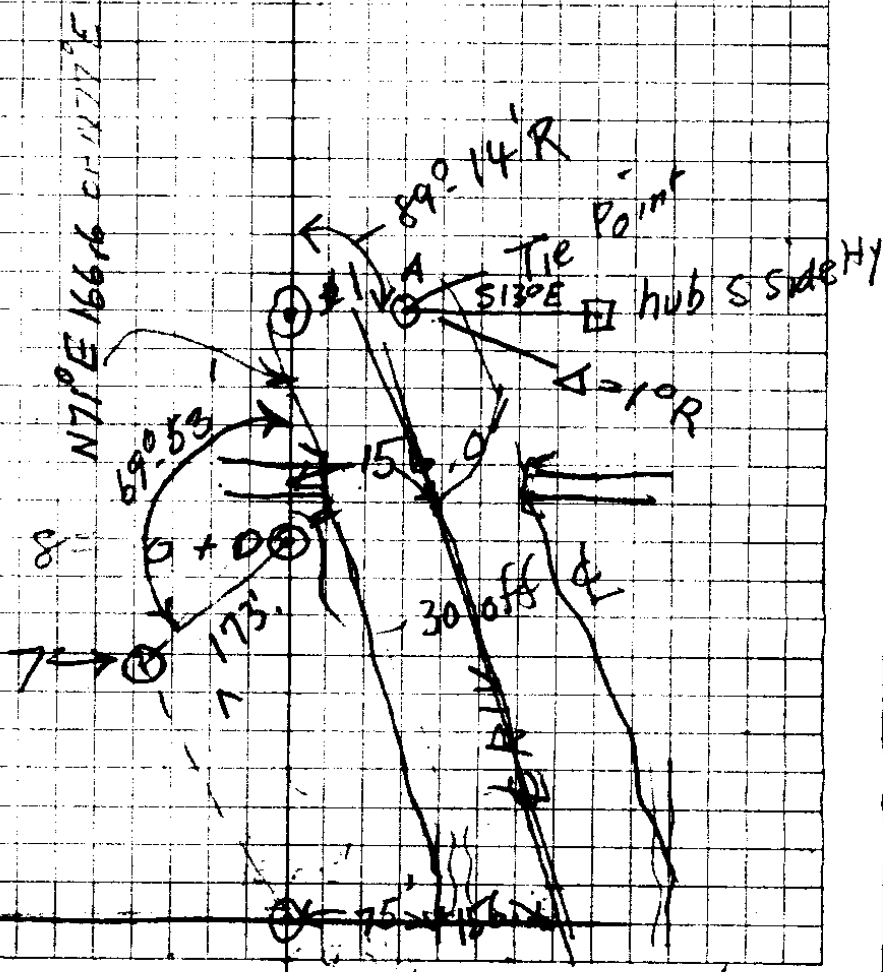
OTO = Beg. - 3/4" I.P. ins. Angle 69° 53'
156' Easting
from Cen. Bridge +
30' N. of Hy.

166
126

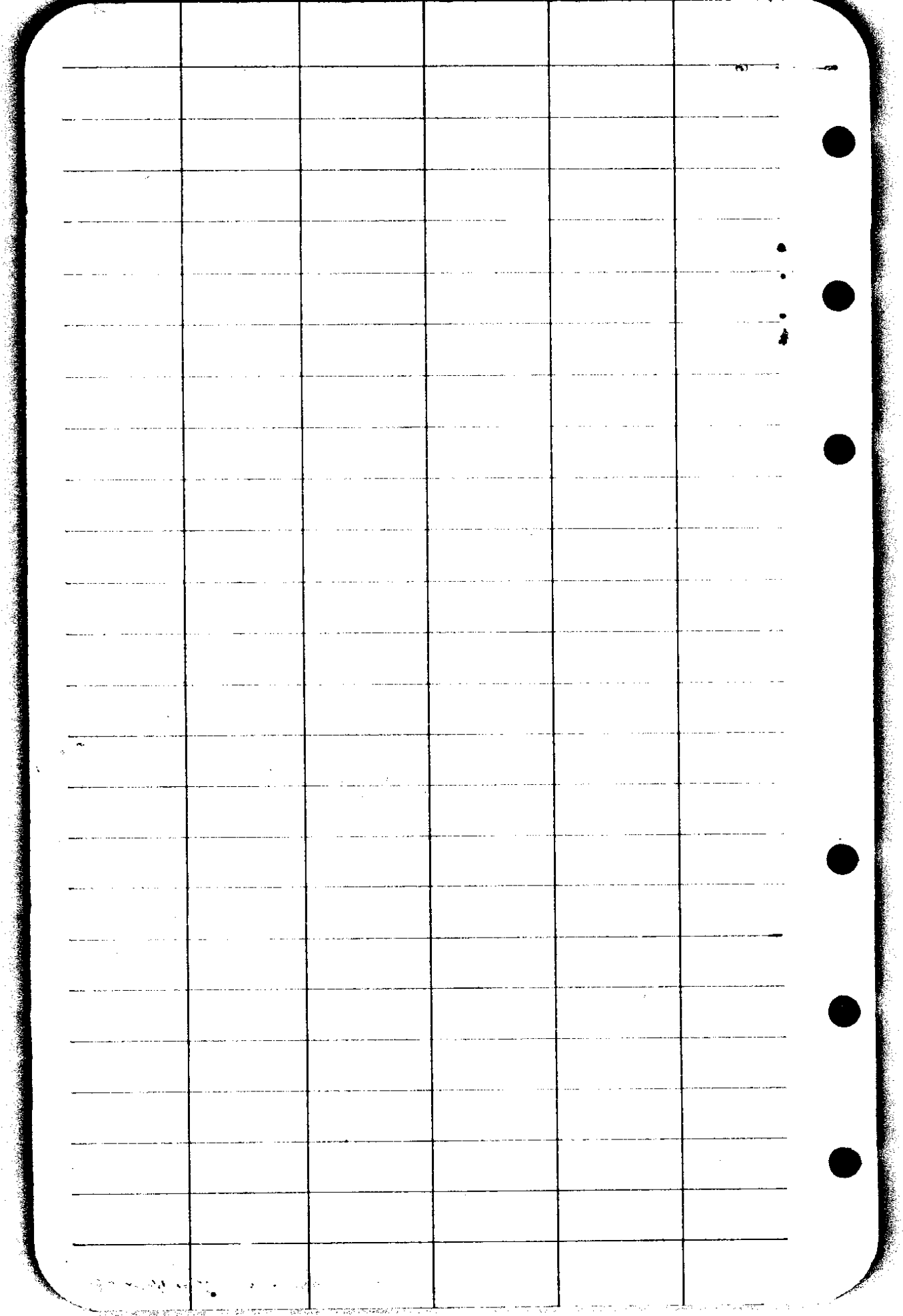
322

$$\begin{array}{r} 442.5 \\ 201.5 \\ \hline 644.0 \end{array}$$

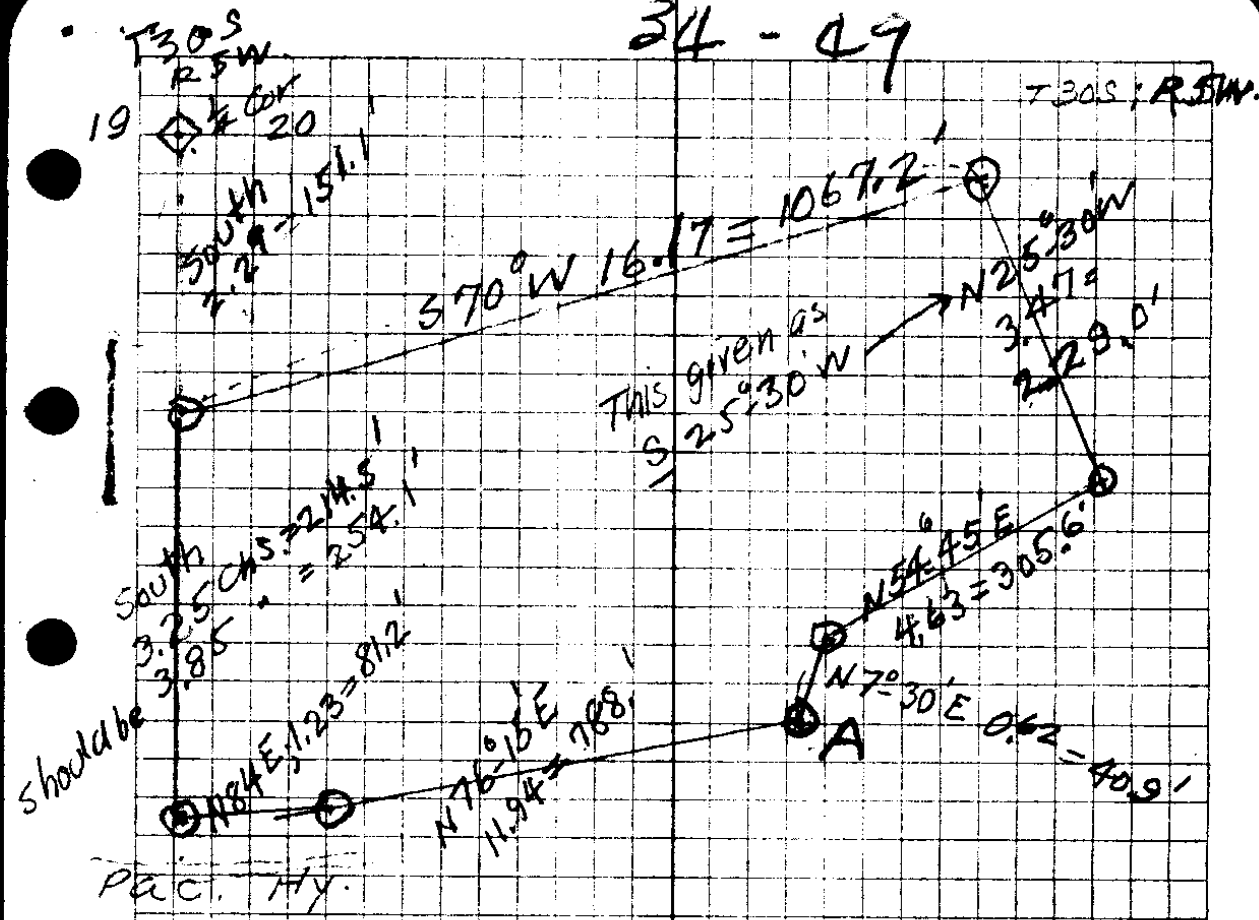
$$\begin{array}{r} 156. \\ 75 \\ \hline 231 \end{array}$$



C.S. File No. 34/49



34 - 49



W. W. Willis,
Canyonville,
Oregon.

1/4

by Stewart & Corbet 19 + 20

Dec 1921 - Yocum T. J. Verrin + Wm Weaver
Reset from orig B.T which was
nearly destroyed by fire + rot.

Set. I.P - 36" B.D. ~~3730~~ 72.1 - S 13 W
20" B.D. N 69° E 46.5'

Book 3/105

C. S. File No. 34/49

Fri Mar

Set up on Cor
Sight on S 12° course 230°

3-18 $\frac{1}{2}$ P.M.

V $32^{\circ} 15'$

H $57^{\circ} 38'$ R to Sun

S 56° W to Sun

3:22

V $31^{\circ} 18'$

H $58^{\circ} 22'$

S 57° W to Sun

CS FILE FOLDER

CONTAINS

MORE

INFORMATION