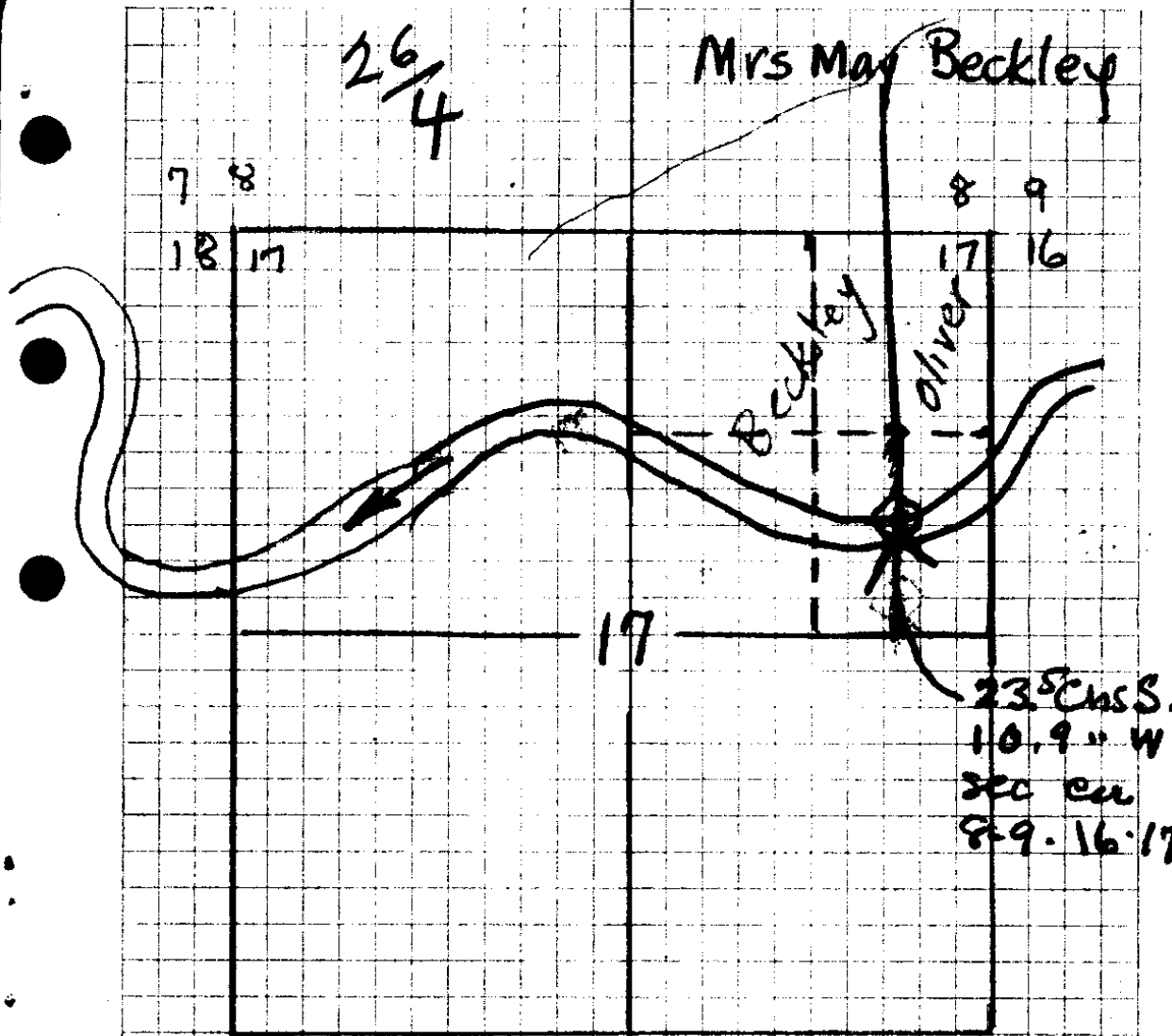




26  
4

Mrs May Beckley



87/195 Beg at pt 235 chs S + 109 chs W. of  
 cor Sec's 8, 9, 16, 17 being also a point  
 on the North bank of N. Umpqua River.  
 in claim 87

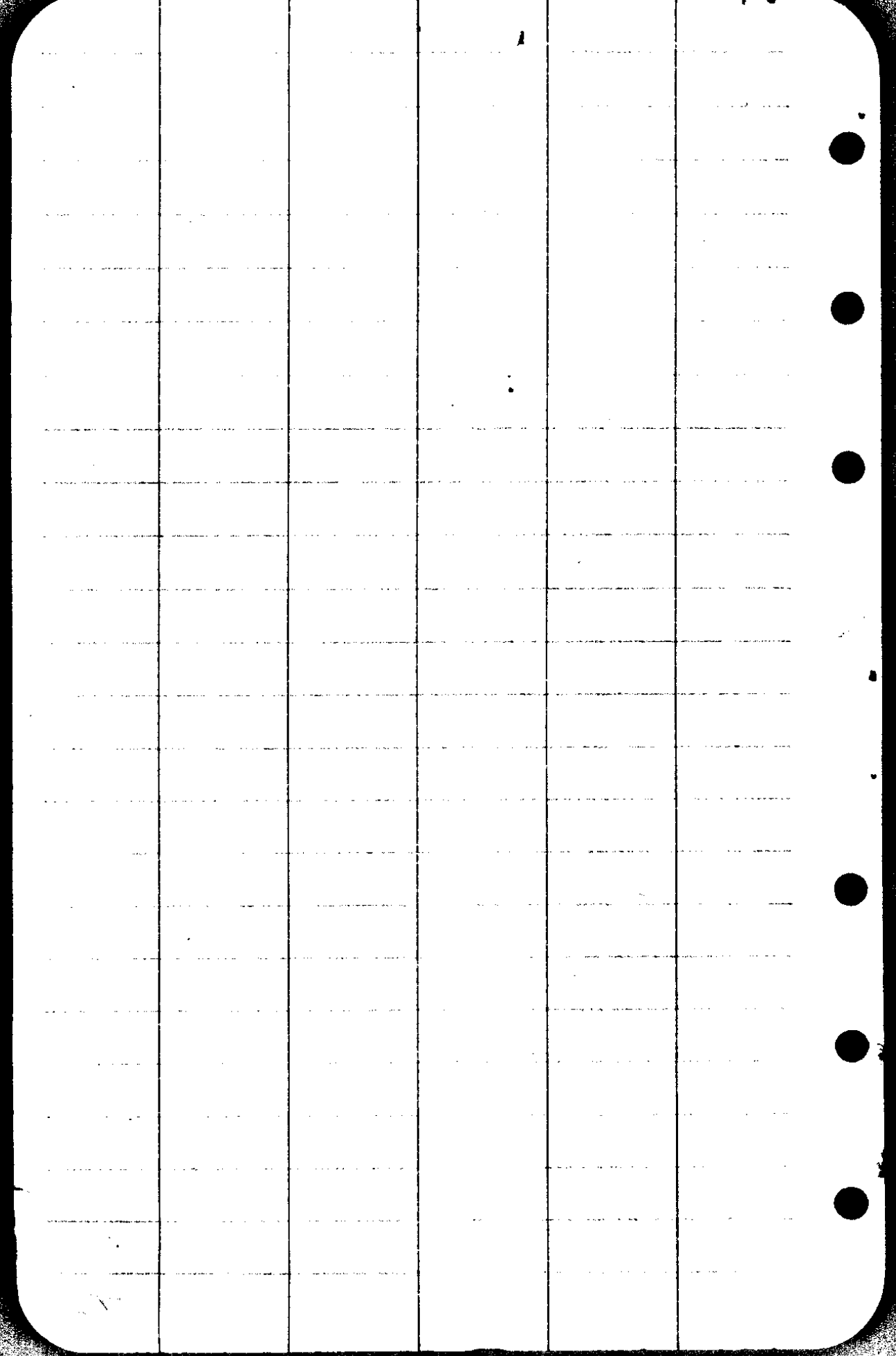
24.7	0.0125
5.6	38.1
7.8	12.5
<u>38.1</u>	10.00
	37.5
	<u>476.25</u>

Ditch length

165  
 195  
 93  
 88  
 220  
 190  
 165  
 565  
 185  
 180  
 160

225  
 4

922



128.0  
~~69.9~~  
58.1

34/10

11

N30<sup>f</sup>W 90.0

10 from 8

N44<sup>0</sup>W 185.0 From 8

9

N54<sup>10</sup><sub>2</sub>W 95.0

8

N86<sup>0</sup><sub>2</sub>W 95.0

7

N82<sup>1</sup><sub>2</sub>W 95.0

6

N1<sup>1</sup><sub>2</sub>W 220. from #4

Note From 5

4 ↓

N1<sup>0</sup>W 185.0 from 4

4

N8<sup>10</sup><sub>2</sub>W 88.0

3

N21<sup>1</sup><sub>2</sub>W 93.0

2

N43W 95.0

1

N67<sup>1</sup><sub>2</sub>W 165

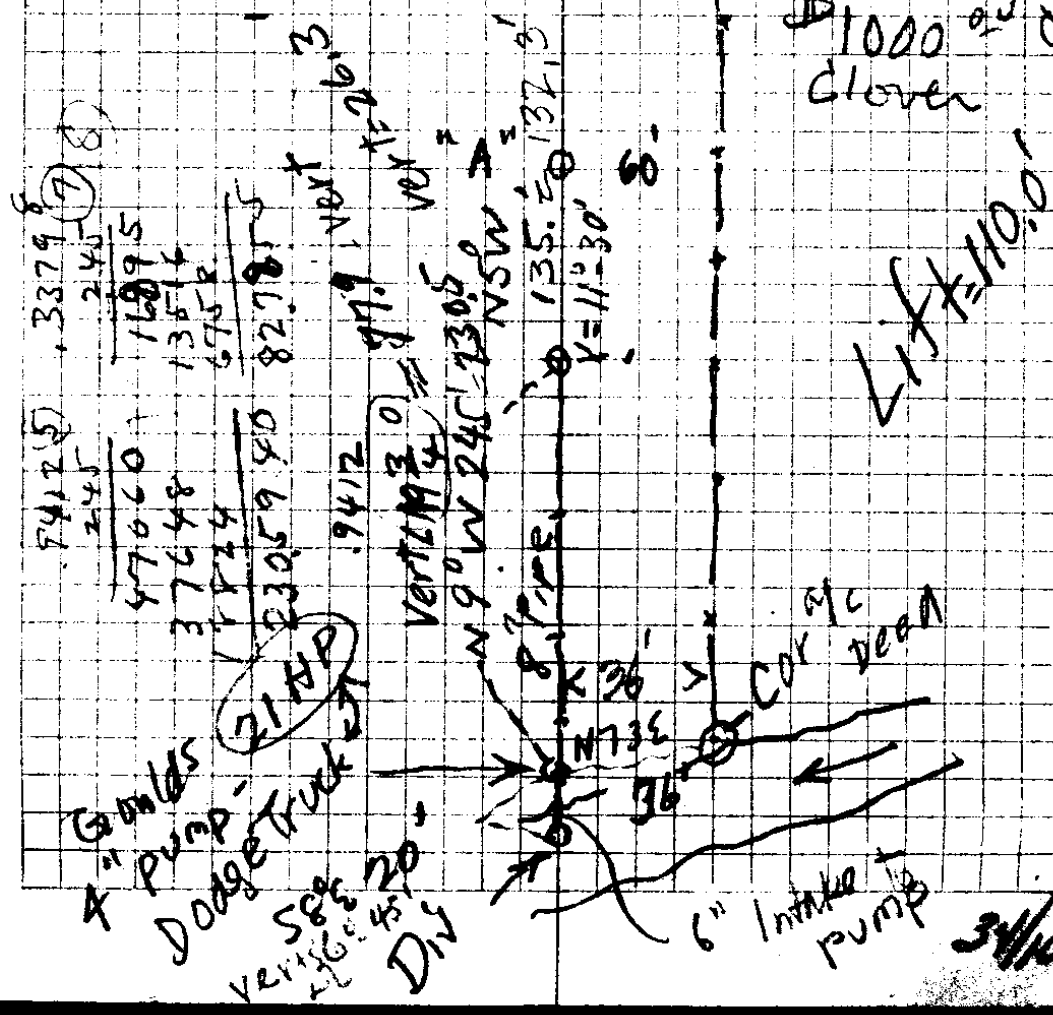
along ditch

"A"

4.45  
4.70  
4.90  
4.70  
4.85

4.6  
4.75  
4.43  
4.60  
4.70  
4.80  
4.9  
5.0  
5.1  
5.25  
4.58

Ditch 2' bott  
18" deep  
21HP  
8 1/2" pipe  
\$1000<sup>20</sup> cor.  
clover



21 N  $35\frac{1}{2}$  W 183.0 End Ditch  
N  $44^{\circ}$  W 160.0

20

N 55 W 90.0

20

N  $71\frac{1}{2}$  W 90.0

19

West 95.0

18 from 16

S  $70^{\circ}$  W 185.0 from 16

17

N 74 W 93.0

16

N 53 W 285.0 from 13

15

N  $48\frac{1}{2}$  W 193.0 from 13

14

N  $46^{\circ}$  W 100.0

13

N 38 W 280.0 from 13

12

N  $35\frac{1}{2}$  W 183.0

10

~~4.65~~  
5.0

4.70

~~4.80~~  
5.15

~~4.75~~  
4.95

4.75

4.80

4.50  
4.50

J 3 5

34/10

- pump.
- N86E 130.0
  - 33 S 3.0
  - 32 N73E 120.0
  - 31 N84E 280.0
  - 30 120' E to Bridge  
East 175.0
  - 29 N88E 260.0
  - 28 Cor Gar 60' E + 60' N.  
S74E 235.0
  - 27 Cor Gar.  
S30E 130.0
  - 26 Cor Garden  
S61W 270.0
  - 25 HS 25' N 15' E  
S73E 190.0
  - 24 HS 100 S  
S47½E 675.0
  - 23 S37E 490.0
  - 22 S57W 535.0
  - 21

along fence

CS FILE FOLDER

CONTAINS

MORE

INFORMATION