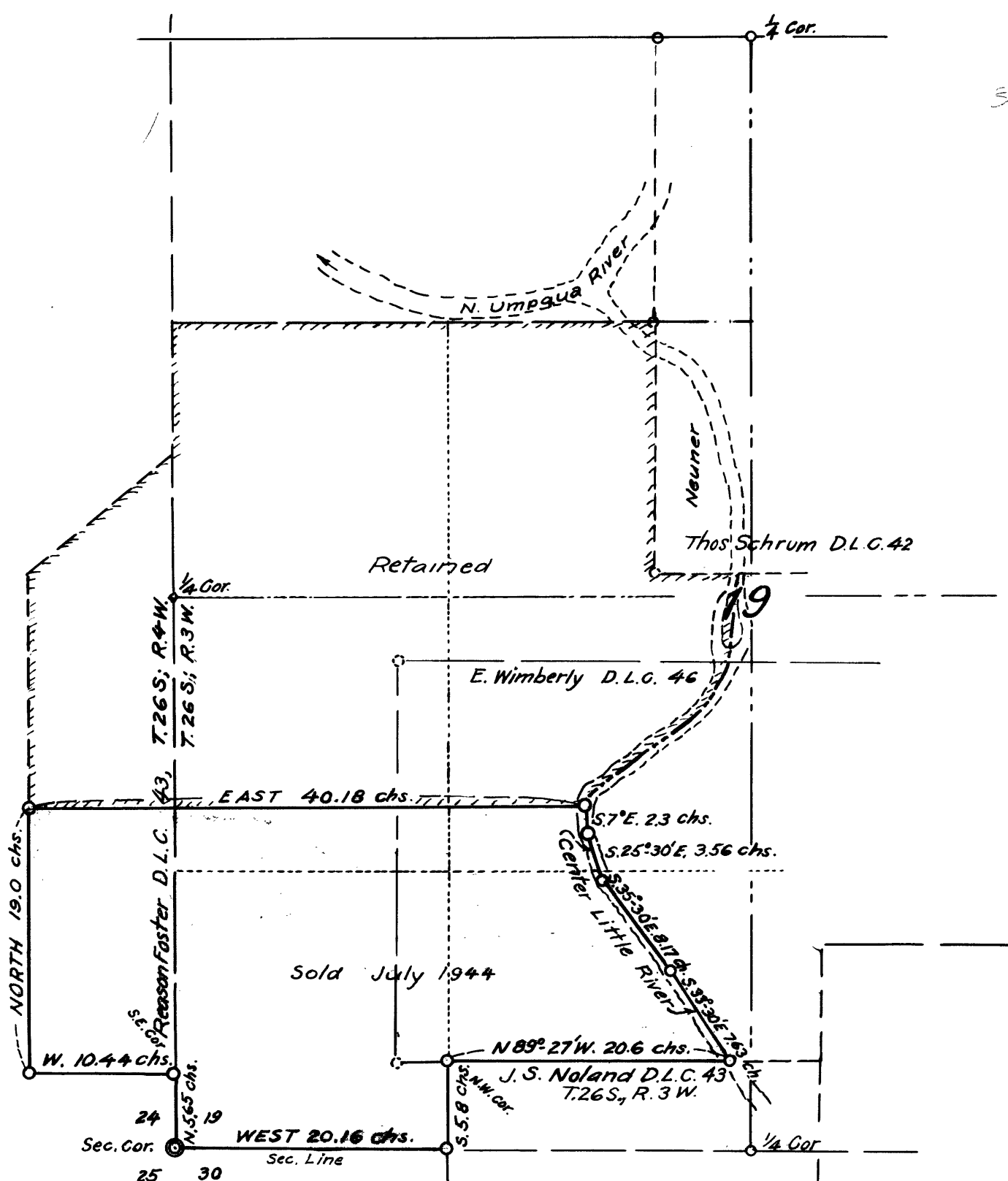


File  
3343



DOUGLAS COUNTY, ORE., SURVEYOR'S OFFICE.  
**HARRY & ADELAIDE WALLEN RANCH**  
 ON LITTLE RIVER, GLIDE, ORE.  
 IN SEC. 19, T. 26 S.; R. 3 W.; & SEC. 24, T. 26 S.; R. 4 W., W.M.  
 SCALE, 1" = 10 CHS. A. BOYER CO. SUR. JULY, 1944.

CS FILE FOLDER

CONTAINS

MORE

INFORMATION