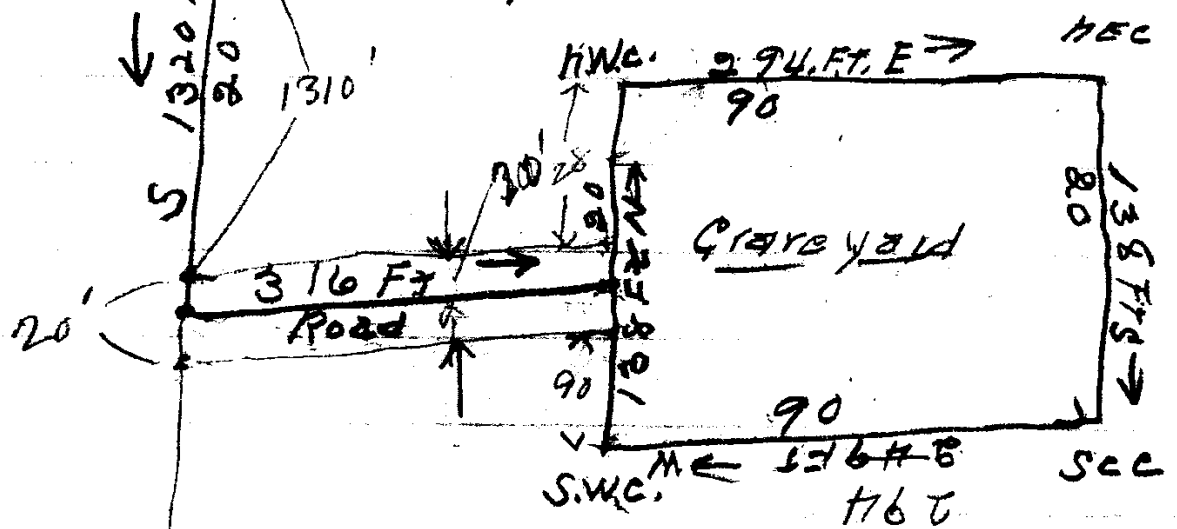


17 daps E  
 49 FT N → WIT.  
 S.W. 1/4 Sec 24  
 50 daps W  
 19 FT SW  
 50 daps W

NW 1/4 Sec 24  
 30/2



28  
 20  
 90  
 138

90  
 20  
 28  
 138

1.07 ac

a tract of land for graveyard  
purposes the boundaries of which  
are described as follows

Beginning at a point on the  
west line of section 24, T 30 S., R  
2 W. W.M. which is 1310.0 ft  
south of the N.W. corner of said  
section 24, <sup>or to</sup> the north side of <sup>20 ft</sup> cemetery  
driveway thence east 316.0 ft along  
said driveway to the west line of  
cemetery thence north 28.0 ft,  
thence East 294.0 ft., thence  
south 138.0 ft thence west  
294.0 ft. thence north 90.0 ft  
to the east end of cemetery  
driveway thence west 316.0 ft  
along driveway to the west side  
of said section 24, thence north  
20 ft to the place of beginning  
containing 1.07 of an acre  
more or less.

For John Rondeau  
July - 20 - 1944

AB.