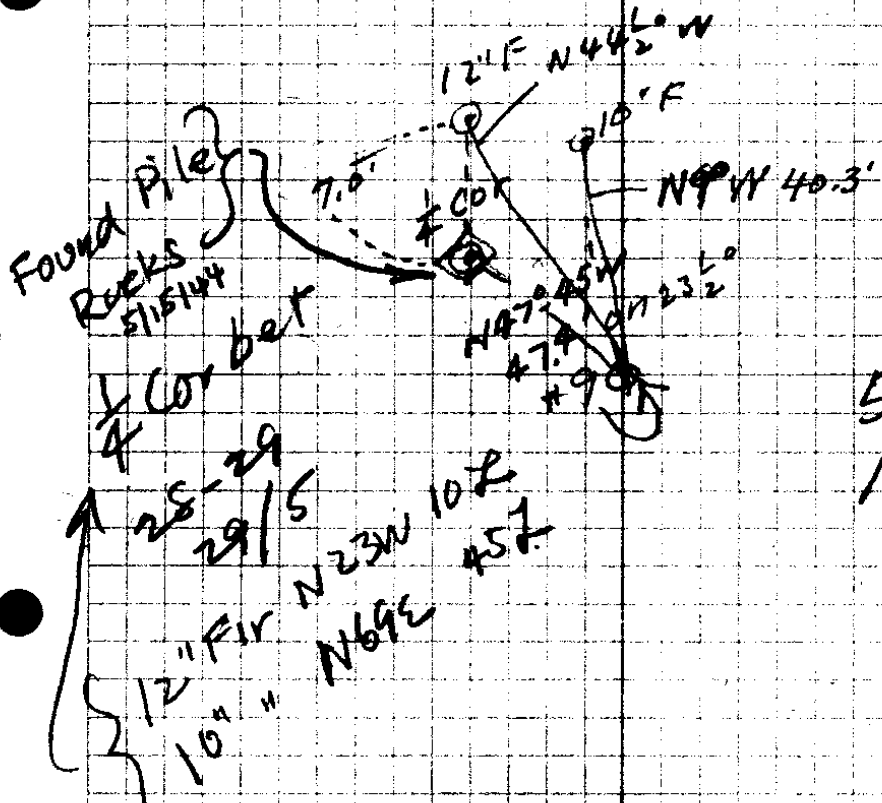
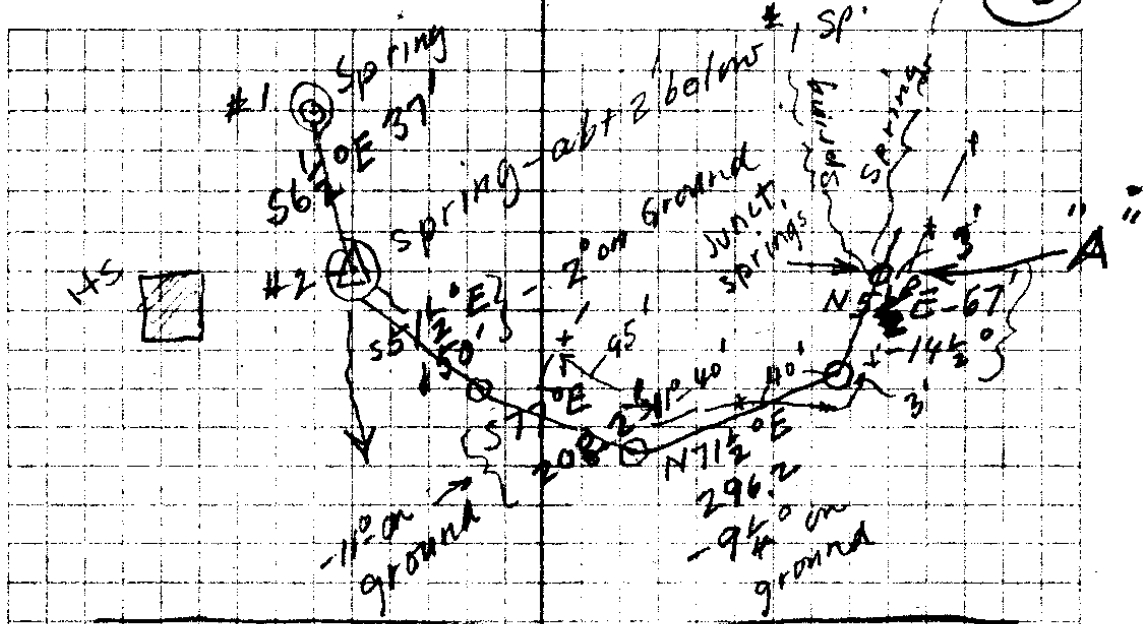


May 15
1944

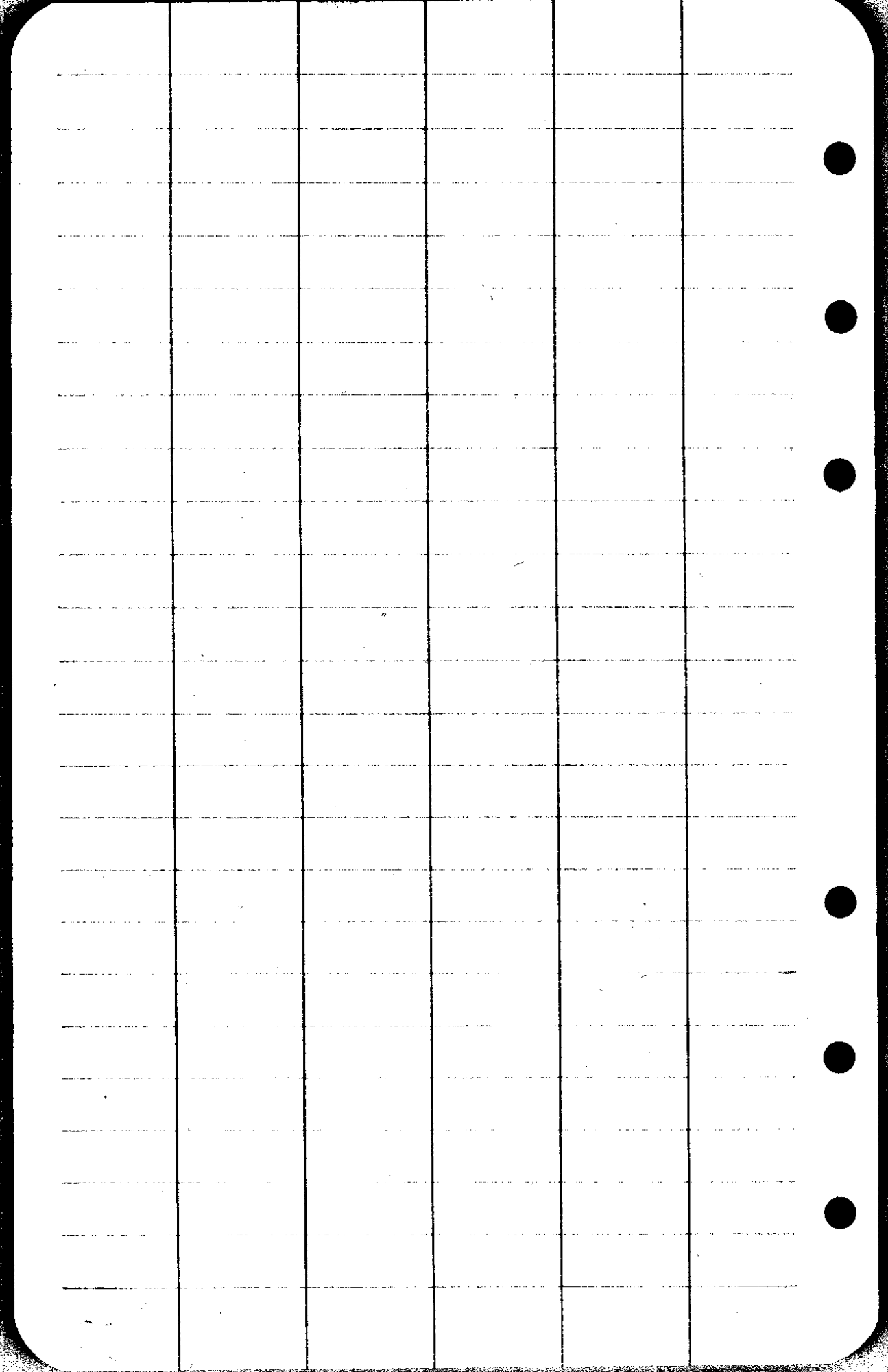
9	N 18° E	161.5		
8	N 15° E	106.3'	-10° 40'	
7	N 5-45° E	81.0'	-11 1/4°	
6	N 0° 30' E	111.4 F		
5	N 0° 30' E	134.0	+18 1/4°	
4	N 9° W	228.0		35 E to Sea Line
3	N 3 1/2° W	76.7		
2	N 5° E	68.0	+20 1/2°	Fence Cor 8' S. Fence runs W.
1	N 1 1/2° E	94.7'	+11°	

ΔA
Junct
springs



5/15
1944
AB

OCT
1929



3

247.42
 12.64

 280.08
 1.77

 278.31
 7.52

 285.83
 1.8

 285.65
 13.03

 298.68
 8.63

 307.31

300
 298.68

 1.32

307.09
 267.20

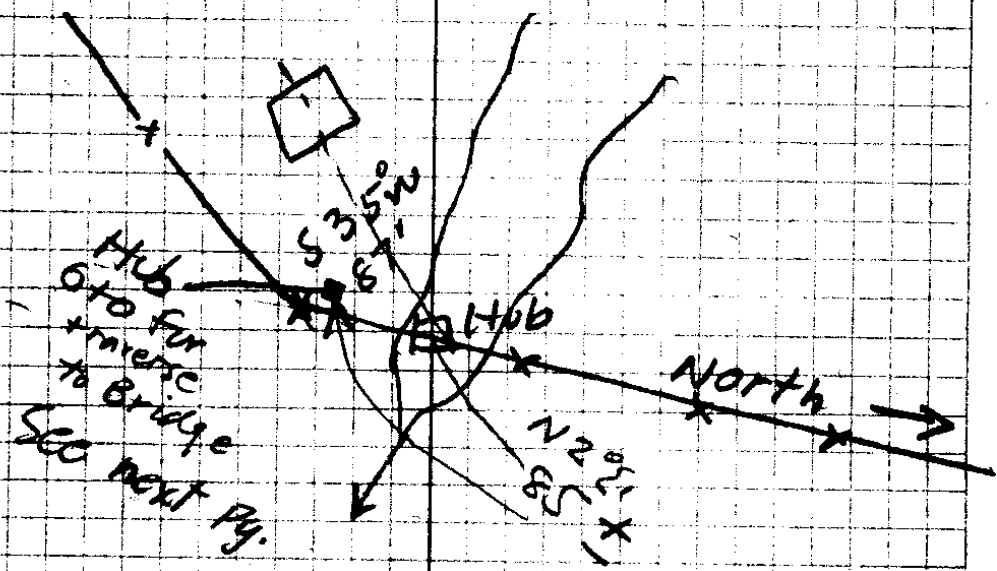
 39.89

298.68
 267.20

 31.26

 307.09
 267.20

 39.89



Traverse to RIP

Hyd Conn
on W Side Maple St

N 38° E 292.0

NE Cor
Depot →

N 52° E 357.9

cen
bridge
S 17° W 300
on RR

N 34° E 470

N 17° E 653

N 44° E 266.0

N 70° E 106.0

N 42° E 382.0

Set up on Co. Rd

↑

S 30° W 195

S 37° W 294.0

S 20° W 148

S 10° E 730

S 43° E 85.0

N 80° E 98.0

N 82° E 138

N 59° E 142.0

at Road →

on Road

↓

N 5° W 97'

N 53° E 47'

S 58° E 60'

S 46° E 53.0

S 56° E 90.0

0+0 = Hub

1248
1203
45

650
597
53

912
865
47

542
465
77

428
286
142

709
571
138

1180
1082
98

355
278
77

857
782
75

990
842
148

844
550
294

358
163
195

538
156
382

857
758
106

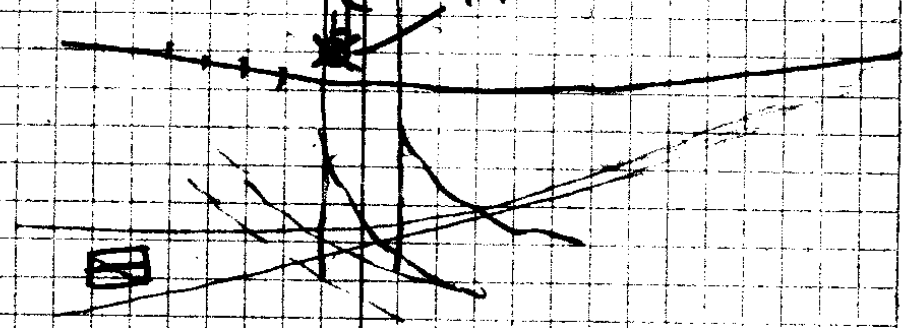
348
152
206

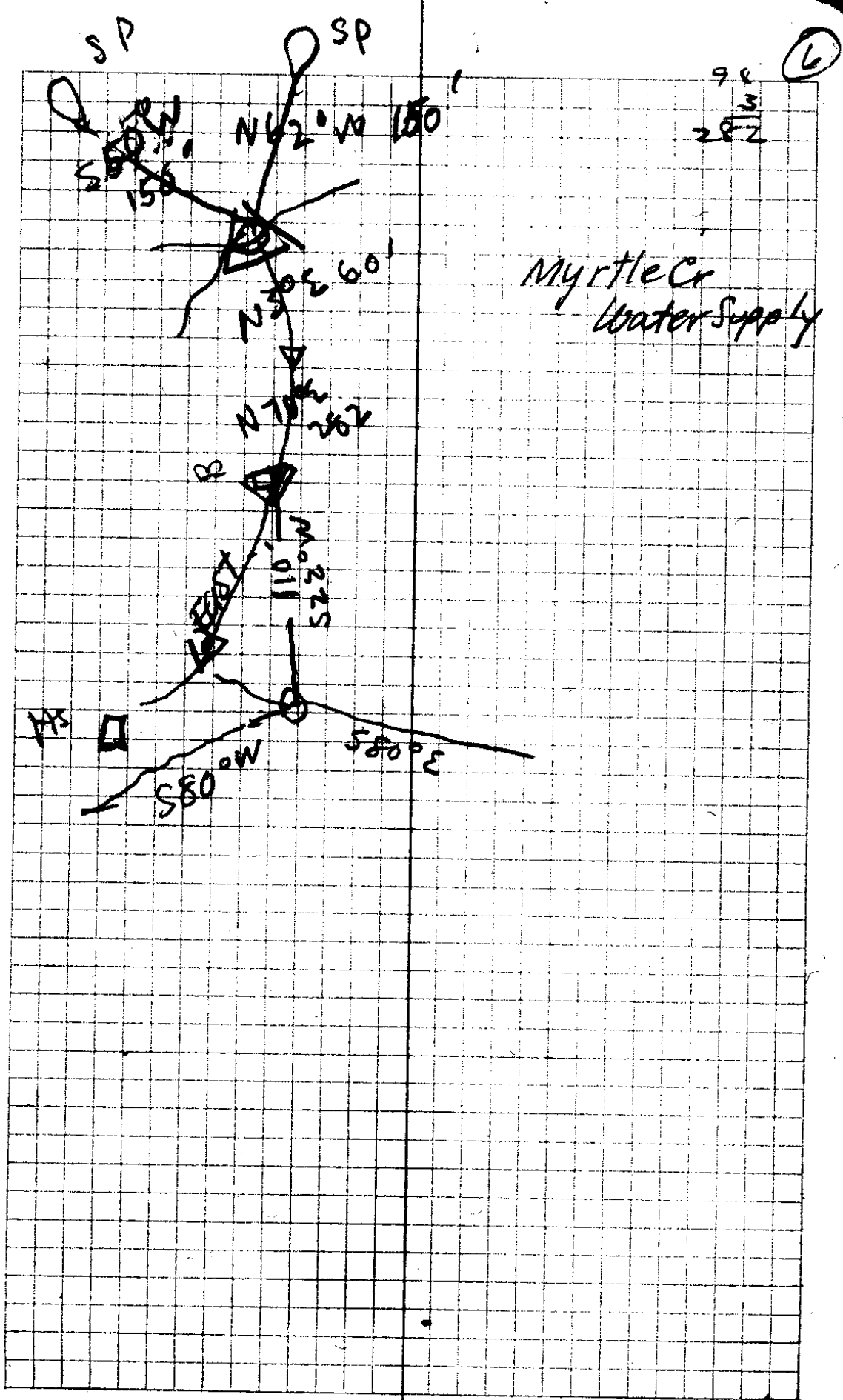
990
327
663

1218
748
470

MAPLE ST

Hyd Connection





S. File No. 33/22

10

300
30
270

300
65
235

File No.

33/72

fs H I - S Elev

157.02

①

0.06 150.96

13.04 164.00

②

0.0 164.00

10.14 174.14

③

0.0 174.14

12.96 187.10

15' above of 2007.08

0.0 187.10

12.98 200.08

④

0.01 200.07

13.07 213.14

1.62 211.52 BM on 30" FIK

62.19

1.09

60.50

12.92 224.44

211.52

⑤

0.22 224.22

12.10 236.32

⑥

0.09 236.23

12.62 248.85

Opp free with wages at 11:30

⑦

1.38 247.47

12.98 260.45

⑧

2.06 258.39

9.78 268.17

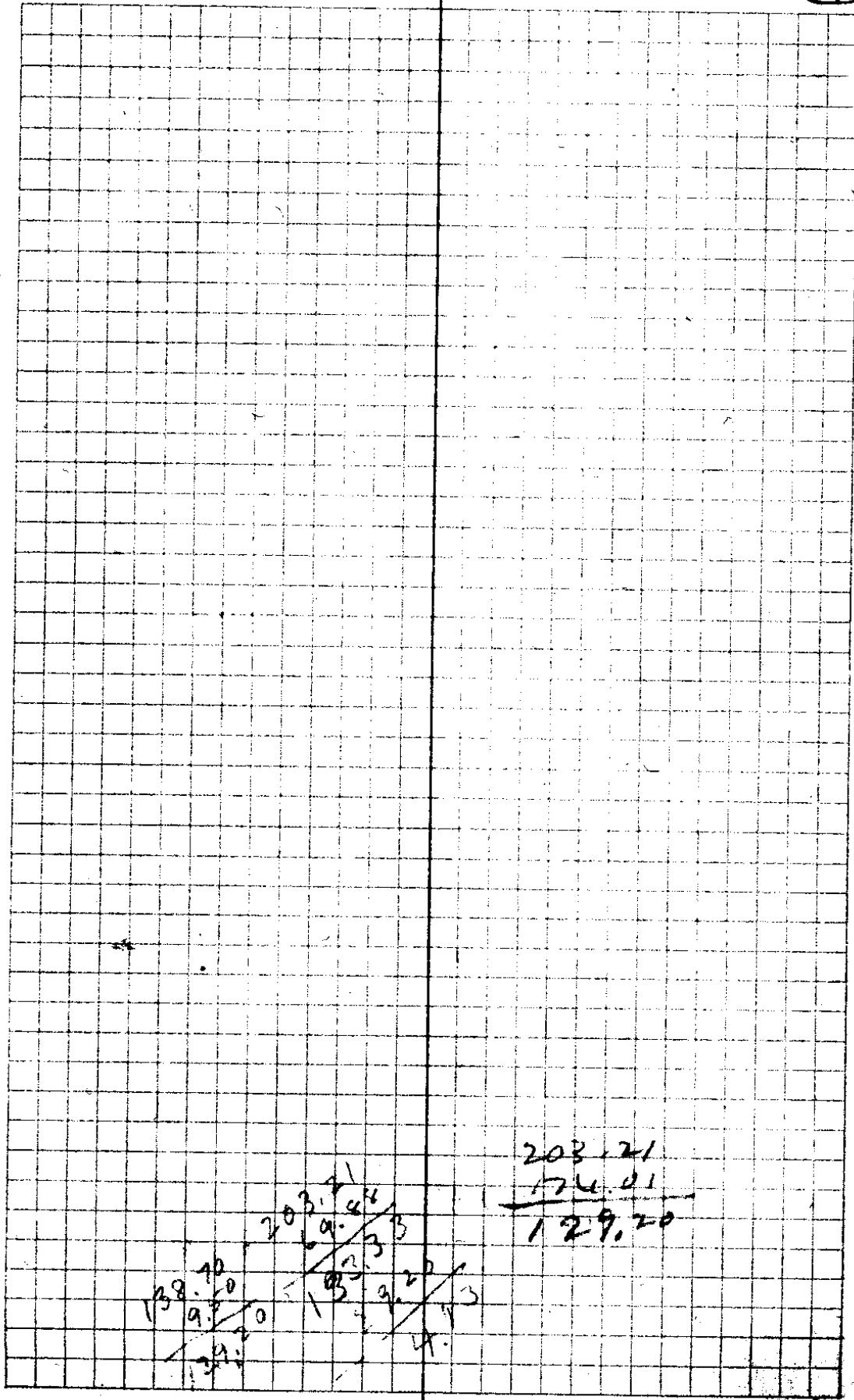
⑨

0.97 267.20

63.49

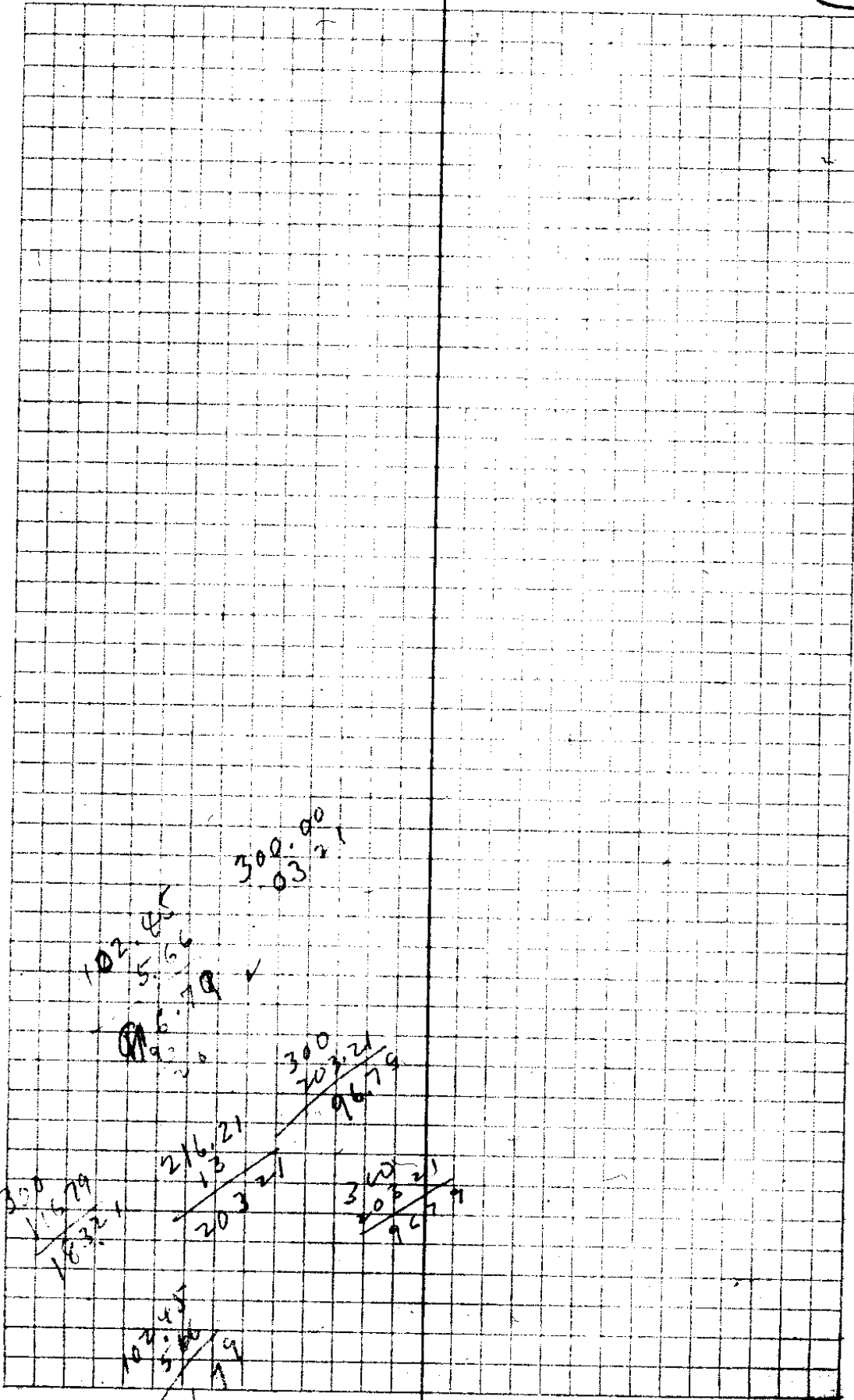
472

55.68



MVRTUB CREEK

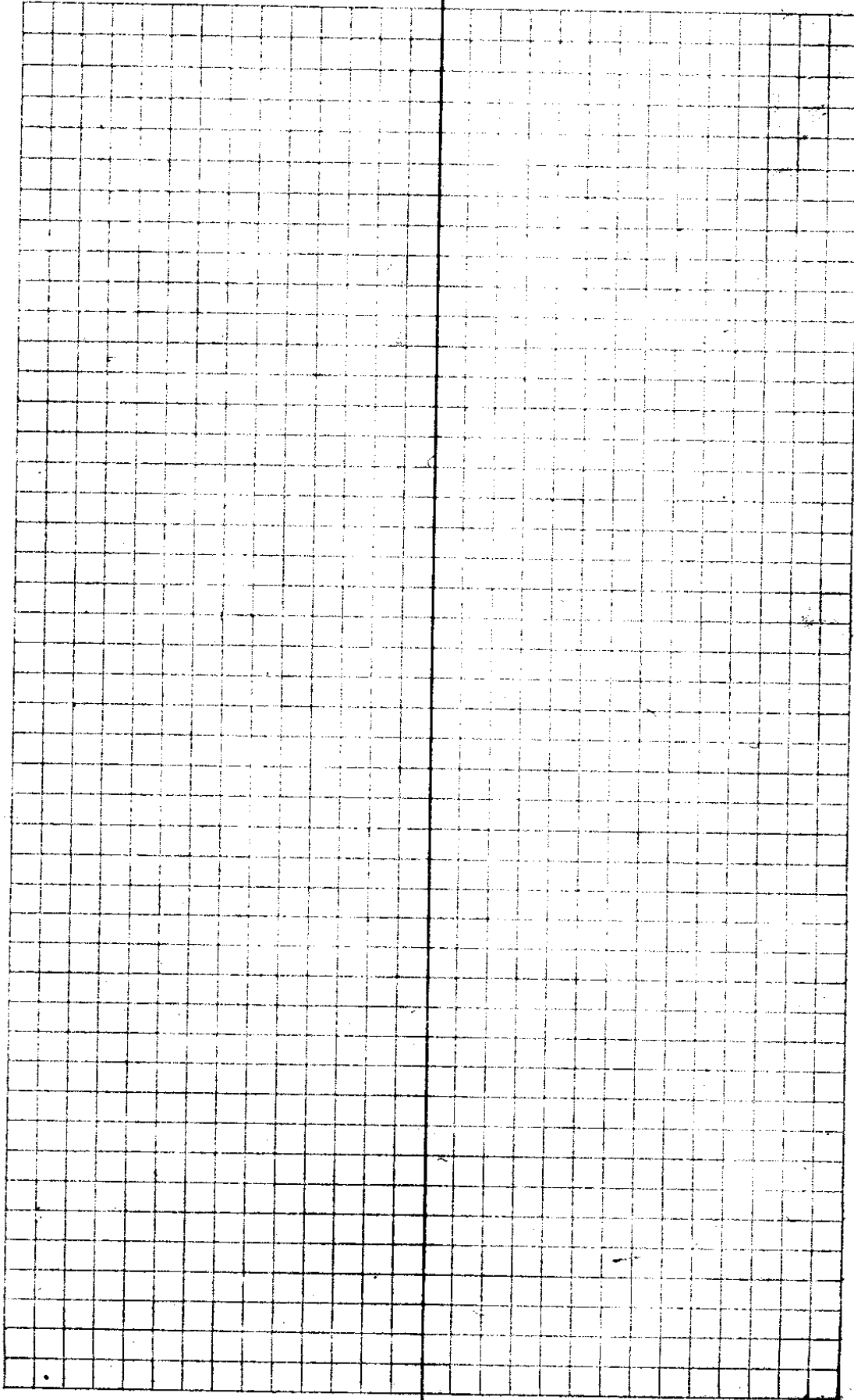
	+S	H1	-S	Elev
	10.9	75.10		74.01
			9.96	65.14
2nd Floor BUSINESS Bldgs.	10.82	75.96		
			0.70	75.26
	11.51	86.77		
			0.21	86.56 12.97
	12.97	99.53		
			0.45	99.08
	8.00	107.08		
			9.60	97.48
	1.21	98.69		
			9.95	88.74
2nd Floor Bldgs	0.40	89.14		
			1.14	88.00
	12.37	100.37		
			0.20	100.17 12.40
	12.50	112.67		
			0.18	112.49 12.71
	12.71	125.20		
			0.0	125.20 12.90
1/2 above H. Schl Floor	12.90	138.10		
			0.0	138.10 12.92
	12.92	157.02		
	109.40 ✓	✓	32.39 ✓	77.01



June 23, 1944

Sta	\$ + S	H I	- S	Elev	
	0.03	203.24		2032.1	✓
⊙			12.07	1911.7	
	0.14	91.31		14	
⊙			12.18	79.13	
	0.44	79.57			
⊙			12.77	66.80	
	1.01	67.81			
⊙			12.99	54.82	
	1.12	55.94			
⊙			13.00	42.94	
	0.72	43.66			
⊙			11.53	132.13	
	0.86	32.99			
⊙			12.66	120.33	
	1.83	22.18			
⊙			12.71	1109.45	on Pac Hy
	2.05	111.50			
⊙			12.73	98.77	
	1.17	99.94			
on Bridge Pac Hy			12.98	86.96	-
⊙	0.13	87.09			
	✓	✓	13.08	174.01	✓
	9.50		138.70	✓	

7



33/22

S. File No.

MVRTLE CREEK

JUNE 23 1944

	Sta	+S	H I	-S	Elev	
	0.0		300.00		300.00	100.00 = Top Conc Wall
				2.73	297.27	Res. New.
					297.27	
	3.85		301.12			
Top conc wall				0.53	300.59	old Res.
⊙	0.1			12.87	288.25	
	0.13		288.38			
⊙				12.68	275.70	
	0.23		275.93			
⊙				12.90	263.03	
	0.46		263.49			
⊙				12.31	251.18	
	0.41		251.59			
⊙				10.90	240.69	
	0.19		240.88			
⊙				12.36	228.52 228.52 53.24	
	0.19		228.71			
⊙				12.70	216.01	
	0.20		216.21			
⊙				13.00	203.21	
	5.66			102.45		

300
211.5
88.5

211.52
12.92

224.44
12.10
236.54
0.9

236.46
12.62
249.07
7.38

247.69
12.98

260.67
2.06

258.61
9.78

268.39
9.9

267.42
211.52

0
267.42

211.52
55.90

267.29
211.52

55.67

224.44
22
224.22
12.10

236.32
12.62
248.94
1.38

247.56
12.98

260.54
2.06

258.48
9.78

268.26
9.9

267.29

236.32
0.9

236.23
1.262

248.55
1.38

247.47
12.98

6040
472
5568

26720
21152
5568

~~21152~~

6040
472
5568

211.52
12.92

224.44
22

224.22
12.10

236.32
0.9

236.23
1.262

248.55
1.38

247.47
12.98

260.45
2.06

258.39
9.78

268.17

268.17
211.12

55.65

M. Creek

July 6-44

Sta	+S	HI	-S	Elev	
				267.20	
⊙	12.66	279.86			
⊙			1.77	278.09	
	7.52	285.61			
⊙			0.18	285.43	
⊙	13.03	298.46			
			0.0	298.46	
⊙	8.63	307.09	7.09	300.00	set spike on alder tree
	4.84	/	9.54	✓	3280

~~Shores~~
On Tull. instead
of Selig and Winston
Properties

Please check & see if
this is ~~not~~ SE $\frac{1}{4}$ of ~~lot 4~~ SE $\frac{1}{4}$, 29, 5
instead of NE $\frac{1}{4}$ of SE $\frac{1}{4}$, 29, 5

Operator # 2

C. S. File No.

33/22