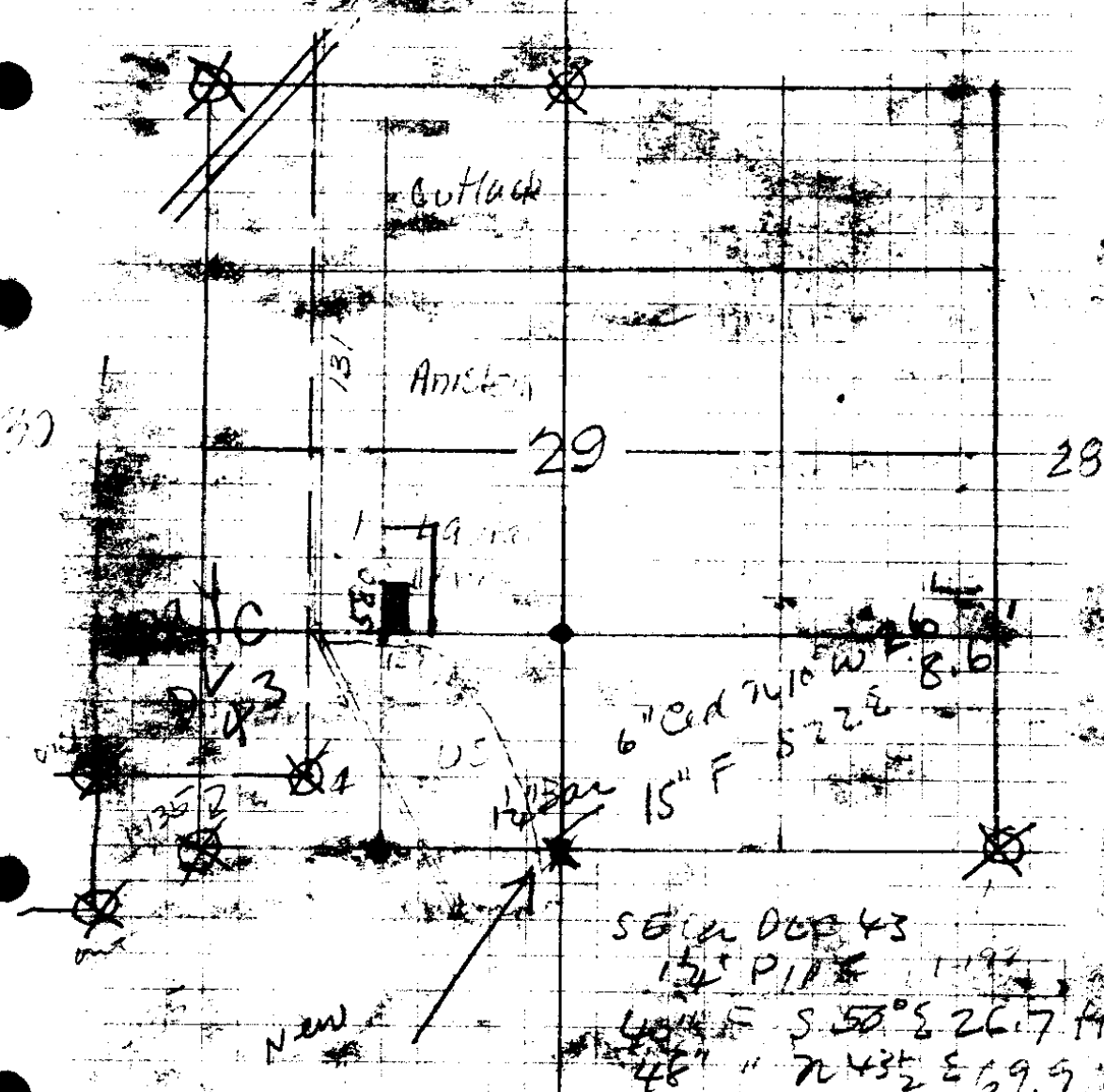


F 29 8

MILTON F ATKINS
Box 106 CURMILL V



29-30-31-32
 1 1/2" PIPE
 30" F 58° W 115.5 FT
 30" " S 29.5 FT
 30" " N 60° E 40.0 FT

SE CORNER 43
 1 1/2" PIPE 1.19 FT
 48" F S 58° E 26.7 FT
 48" " N 43° E 69.9 FT

C.S. File No. 33/18

Send in questionnaire

Edhel Wengel

Trustee

myrtle beach

992	6
5928	
1180	
217.248	

163.5
576
621
725.5
315
110160

1581
1347
336

300.
217.2
101.0
99.0
110.9
46.5
120.3
232.6
137.5
345.0

Riviera Sulphur Co

SEC 17

7/6

w/4 sec

SE + S4 SW cor