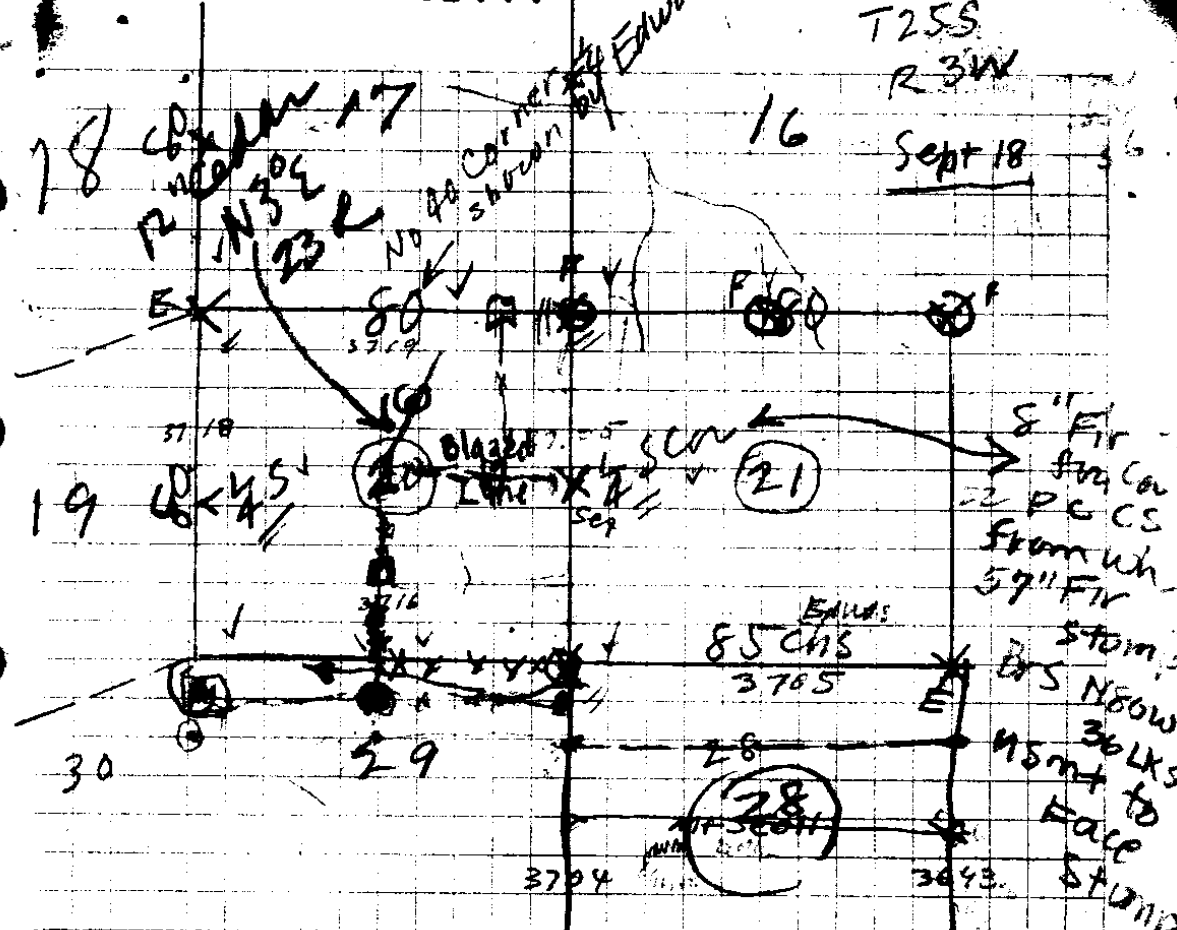


T255  
R 3W  
Sept 18



N bet 20 & 21  
 13.4 - 30" Ced  
 17.5 Ridge  
 40. Ced Post { 8" Ced  
                   { 550 E, 10 X  
                   { 10" Ced  
                   { 53 W, 13 X

63.8 - 40" Fir  
 80 = Cor. - 16-17-20-21 { 40" F N 60 E 35 X  
                                   { 36" F S 20 E 24 X  
                                   { 10" from 550 W 18 X  
                                   { 24" Ced. N 21 W 11 X

Cor 20-21-28-29 = Yew Post  
 30" F N 65 E 30 X  
 30" F S 60 E 40 X  
 36" F S 69 1/2 W 31 X  
 24" F N 82 W 67 X 1883

N bet 29 & 30  
 66.5 brook  
 80 = Cor 19-20-29-30  
 { 8" Yew N 55 E 38 X  
 { 30" F S 10 E 45 X  
 { 12" Ced S 61 W 33 X  
 { 24" " N 39 W 19 X 1883

(Merrill)

C. S. File No 33/17



.87	6	.98
.65	2	.91
.90		<u>490</u>
.94	4	882
.52	7	<u>9310</u>
.94	4	
.87	6	
.05	5	
2.0	=	
.991	4	
.09		

1.61798  
 10.43  
 2.0  
 .99  
 .52  
 .93  
 14.87  
 93  
15.80  
 .27

16.07	16.07
.93	.93
1.42	1.42
2.61	1.0
	<u>.61</u>
<u>21.03</u>	<u>20.03</u>
1.05	

.706  
 675  
3230  
 12  
 114610  
 305  
 448  
 1120  
 333  
 523  
 11

Big  
Yewwood  
Tree

27

1.93

26 = 37.72

0.858

25

1.537

24

0.825

23

0.787 F

22

2.59 F

21

1.0 120 = 0.978

20

2.33

19

2.32 F

18

2.665 F

17

S: 1:25 ch F

16

0.037  
Beg Tuesday

21.03 6  
 .05 5  
 1.25 8  
 2.665 11  
 2.32 7  
 2.33 8  
 0.978 6  
 2.89 7  
 .787 4  
 .825 6  
 1.537 7  
 6.858 3  


---

 37.220  
 1.93  


---

 39.15

40  
 37.22  

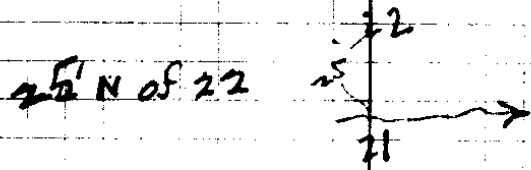

---

 2.78

40  
 39  


---

 .81



13 = 2 L Suntn

0.030 F

1.0 19° 0.94  
1.0 22° 0.93

12

0.994 16° 0.95

11 Top Windfall

0.15

1.0 16° 0.96  
1.0 13½° 0.97

10

0.575

1.0 F

1.0 15° 0.96

9-5' W of Double Firs

0.54 F

8

1.0 18° 0.95

7

0.285 F

6

0.70 F

5

1.0 19° 0.94

4

1.0 16° 0.96

3

W 0.07

2

W 0.82

1

W 0.665

SE (u20)

994 (2)  
 76  


---

 5964  
 8948  


---

 45424

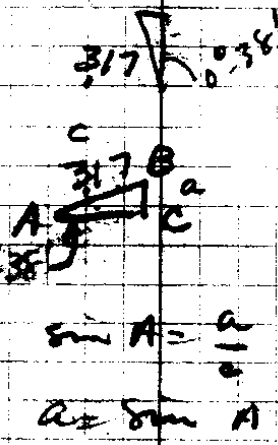
0.655  
 0.82  
 .02  
 0.94  
 0.94  
 0.70  
 0.285  
 0.95  
 0.52  
 0.94  
 1.475  
 0.97  
 0.94  
 0.15  
 0.95  
 0.93  
 0.94  
 0.83  


---

 13.38

24	0.11 1.0 F	21° = 933	} 31.7	W B 285
	1.0 —	14° = 967		
23				
	2.79			
22				
	2.912			
21				
	0.766			
	1.0 F			
	1.0 F			
ON Line 20				
	0.675 F			
19				
	0.925 F			
18				
	1.0 F			
	0.87			
17				
	1.0 F			
	0.03			
	1.0 F			
16				
	0.83			
	1.0 F			
	1.0	16° = 0.95		
15				
	2.46 F			
14				
	0.357 F			
	1.0 - 14°	0.97		
13				
	= 1.338			

13.38  
 1.77  
 3.4  
 2.00  
 1.85  
 1.03  
 1.87  
 1.925  
 2.4775  
 6.45  
 2.76  
 2.912  
 2.780  
 3.170  
 5  
 900  
 120  
 38.90  
 .75  
 38.90



$\sin A = \frac{a}{c}$   
 $a = \sin A \times c$

0.967 4  
 1.10  
 1.10  
 3.170 2  
 3.17  
 0.11  
 3.17  
 3.17  
 0.5487

40  
 38.3  
 1.7  
 .255  
 948

40  
 38.90  
 1.1

yellow parts a

Copied and true

5475

SW 20  
 25/3

14.20  
 1.7 29

25

0.10

1.00

150 = 966

24

10

33/17

U. S. File No. 33/17  
11

July 20

524° W 68 Links

PC 14 S 29 P

40" F W 65" E 14

in bank

PC S 25 - 137

4x4 Red

Pile Box

Curv

1.4

.200

2.2

.73

2.7

.97

2.4

.33 F

1.1

.135

W 1.4

.088

.0 F

.55 L F

.63 F

Sideline

Leave flat

.82 F

1.0 F

1.0 F

.26

.64 F

1.0 F

Block  
Crock

S 25 L

1320's Cur 20

E bet 21+28 - 12.3 = 30" Hem  
 Random 15 40" Fir  
 39.2 Top Ridge - from this pt  
 highest pt on Mt Scott  
 bks South  
 40 = Temp 14 cu  
 57.5 Descend Bluff  
 59.8 = 30" Fir  
 61. Foot Bluff  
 80.16 = NTS Line

Traverse  
 589-43 W bet 21+28  
 40.08 = new post for cu  
 36" Fir N 50 E 14 Z  
 5" Map S 15 E 30 Z  
 80.16 = cu

7L bet 28+29  
 15.3 = 30" Hem  
 20.18 = Ridge  
 37.5 = Brook  
 40 = cor S 36" F N 65 E 38  
 2 60" F N 70 W 17 Z  
 44.2 = 30" ced  
 52 Ridge  
 80 = cu - 20-21-28-29

n bet 27+28  
 3.8 = 36" Hem  
 12.75 SPRING - 100' E  
 37 = 20" ced  
 40 = cor (14 cu)  
 20" F N 11 W 38  
 30" Ced S 71 E 13 Z  
 46 = 40" Fir  
 59.3 = 50" "  
 80 = cu - new post - 21-22-27-28  
 24" F N 51 E 40 Z  
 18" Hem S 49 E 50 Z  
 36" F S 35 W 32 Z  
 38" F N 20 W 13 Z

