

Miller

Mar 1-44

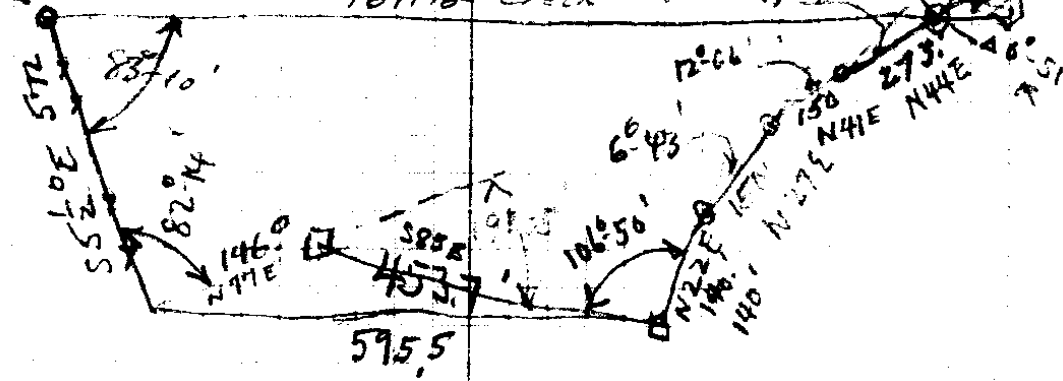
3142.0  
 100  
 3242.0

1601.0  
 + 237  
 1877.5

THIS PT.  
 423.7 W  
 OF  
 96.9 N  
 141.8  
 148.25  
 148.25

Aunt Evans  
 SE cor

16716 Check

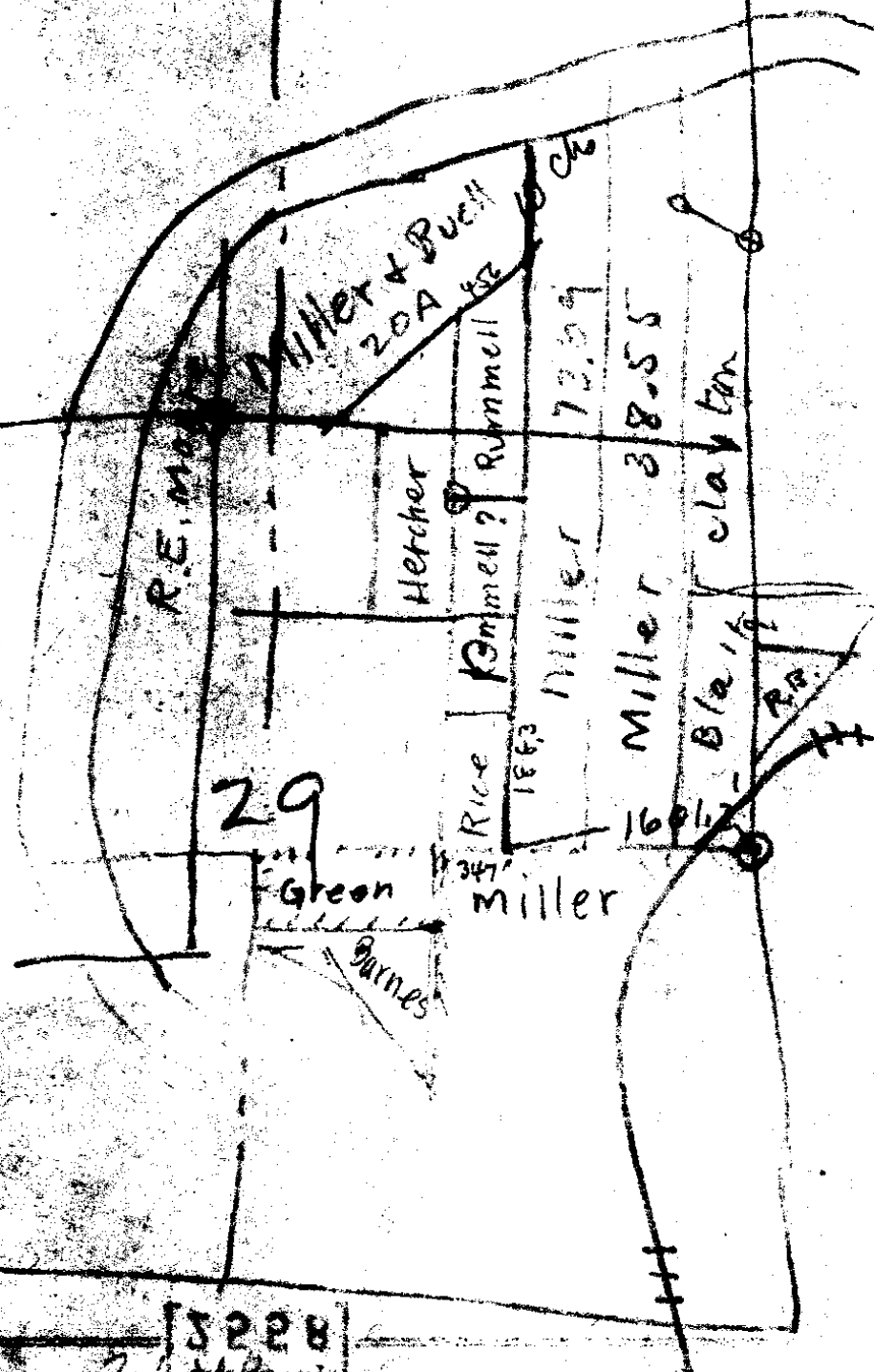


100-50  
 85

28/6



Duro  
19/362  
84/157  
798/253  
Rice  
94/182



3228

COAST PRINTING & BINDING CO.  
1917

C. S. File No. 32/57

4 Can bet 28 + 29

Plow Share from work

36" W.O. by 557-202 146<sup>2</sup>

30" B.O. " 564-30 W 440<sup>2</sup>

W-12, 84 Cus to, 1 Pin

no. 202 64.22 Cus to Can R

---

146  
66  

---

896  
896  

---

9636

66<sup>3</sup>  
440  

---

2640  
264  

---

29040

Miller

Mar 1-44

176°

W 300'

W 300' F

W Line Priv Rd

W 300.0 F

W Line Pac Hy

W

~~237.0~~ <sup>640'</sup> 994 use 230°

229.1

4 Co. Road

300 F

CS FILE FOLDER

CONTAINS

MORE

INFORMATION